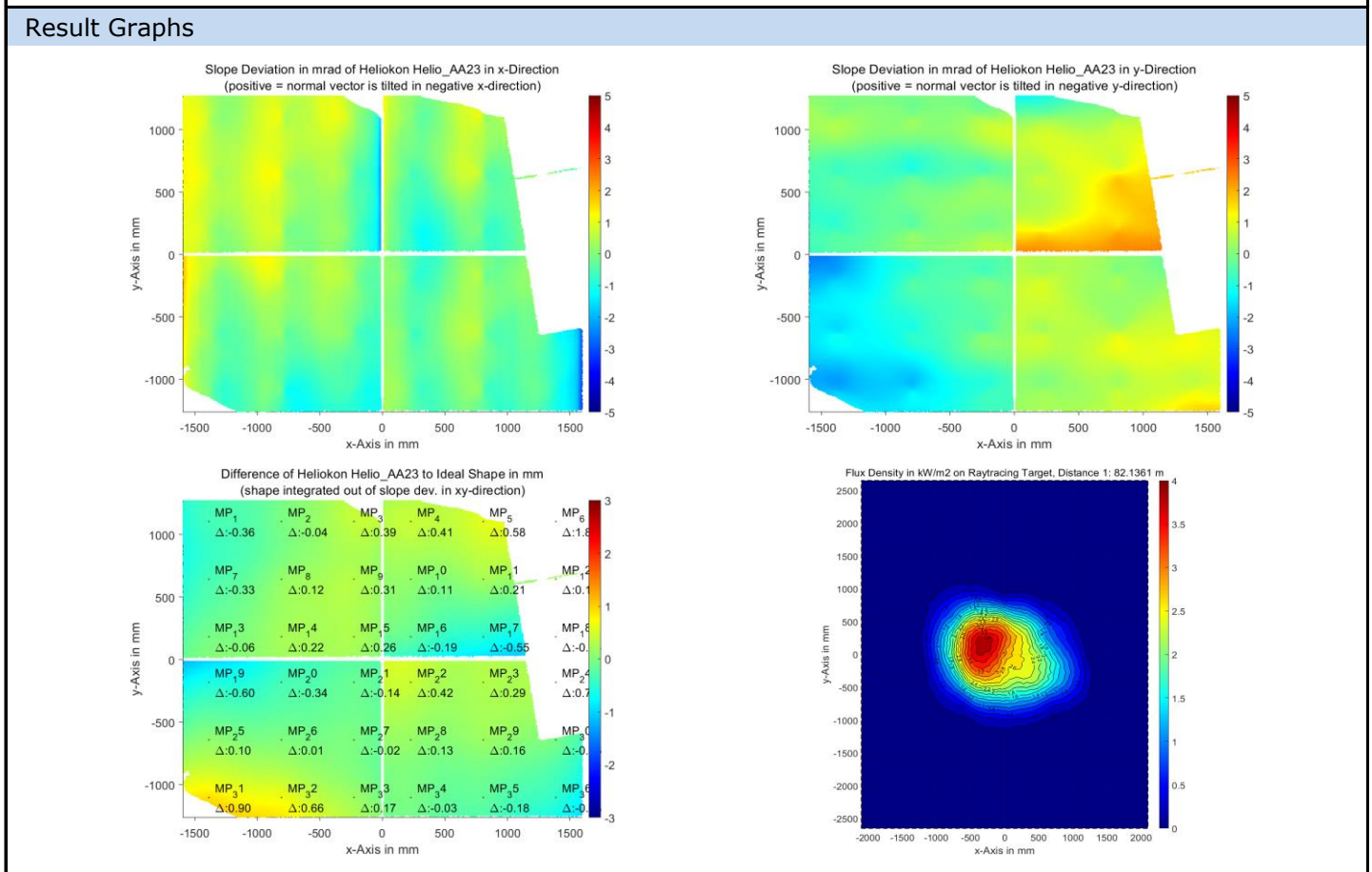


# QDec Measurement Summary

Measurement Information			
<b>Panel:</b>	Helio_AA23	<b>Meas. Date:</b>	09.09.2021 - 21:37:45
<b>Paneltype:</b>	Heliostat	<b>Operator:</b>	DLR
<b>Setup:</b>	MeasPosition	<b>Comment:</b>	
<b>Negl. Rim:</b>	0 mm	<b>System:</b>	QDec_2014-101
<b>Orientation:</b>	Mean Slope to Zero	<b>Location:</b>	Jülich

Result Overview			
<b>Quality:</b>	no specifications	Evaluated Surface: 85.6 %	
Value	Measurement	Specification	Description
SDx	0.60 mrad		Slope deviation in x-direction (rms)
SDy	0.91 mrad		Slope deviation in y-direction (rms)
ICAP_D1	99.13 %		Intercept on aperture



Measurement System Information		
Config File:	130929_Helio	QDec Version: 1.0.5207 (06.10.2021)
Evaluation Date:	13.10.2021 - 11:27:07	
Last Calibration:	14.08.2014	
PDF Filename:	...\MeasData_210909\Results\Helio\Helio_AA23\Helio_AA23_Rim0_Result_211013112707.pdf	