

QDec Measurement Summary

Measurement Information

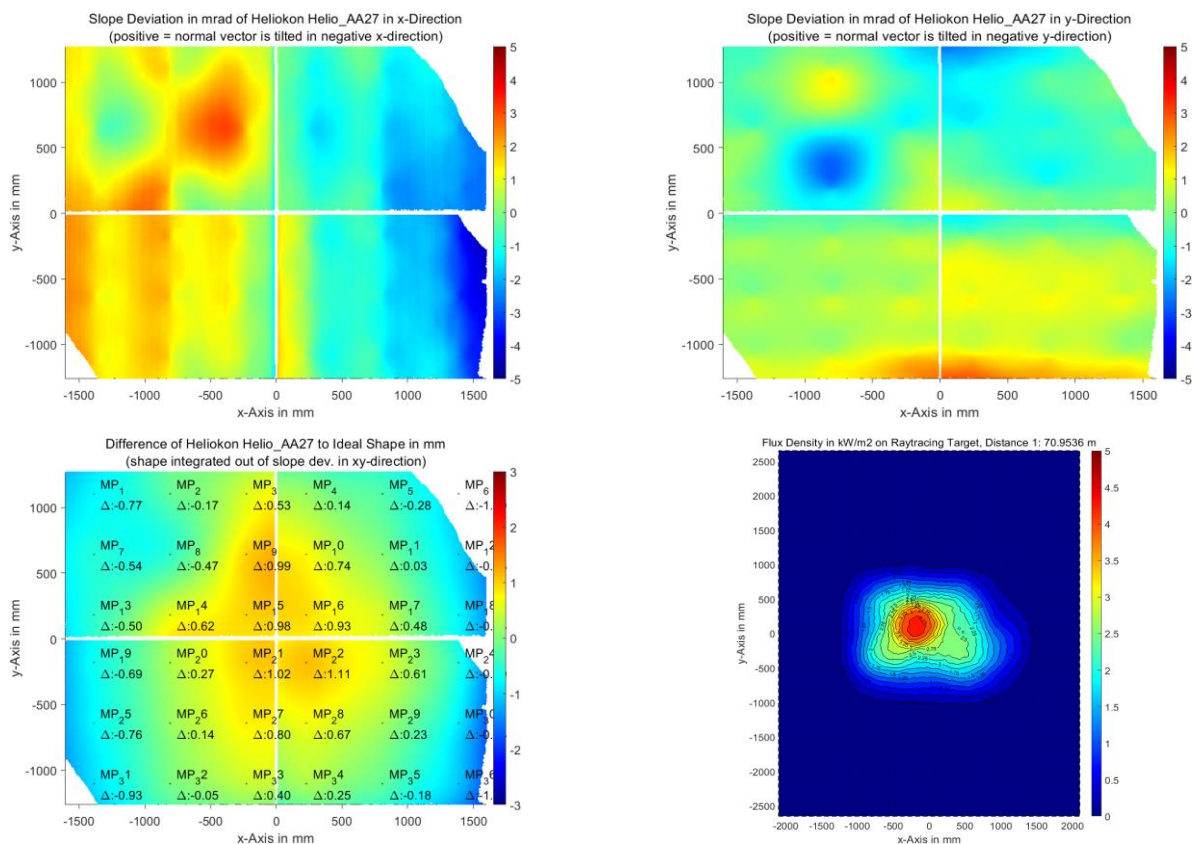
Panel:	Helio_AA27	Meas. Date:	09.09.2021 - 21:42:13
Paneltype:	Heliostat	Operator:	DLR
Setup:	MeasPosition	Comment:	
Negl. Rim:	0 mm	System:	QDec_2014-101
Orientation:	Mean Slope to Zero	Location:	Jülich

Result Overview

Quality: no specifications Evaluated Surface: 95.1 %

Value	Measurement	Specification	Description
SDx	1.53 mrad		Slope deviation in x-direction (rms)
SDy	0.90 mrad		Slope deviation in y-direction (rms)
ICAP_D1	99.34 %		Intercept on aperture

Result Graphs



Measurement System Information

Config File:	130929_Helio	QDec Version:	1.0.5207 (06.10.2021)
Evaluation Date:	13.10.2021 - 11:36:03		
Last Calibration:	14.08.2014		
PDF Filename:	...\MeasData_210909\Results\Helio\Helio_AA27\Helio_AA27_Rim0_Result_211013113603.pdf		