

QDec Measurement Summary

Measurement Information

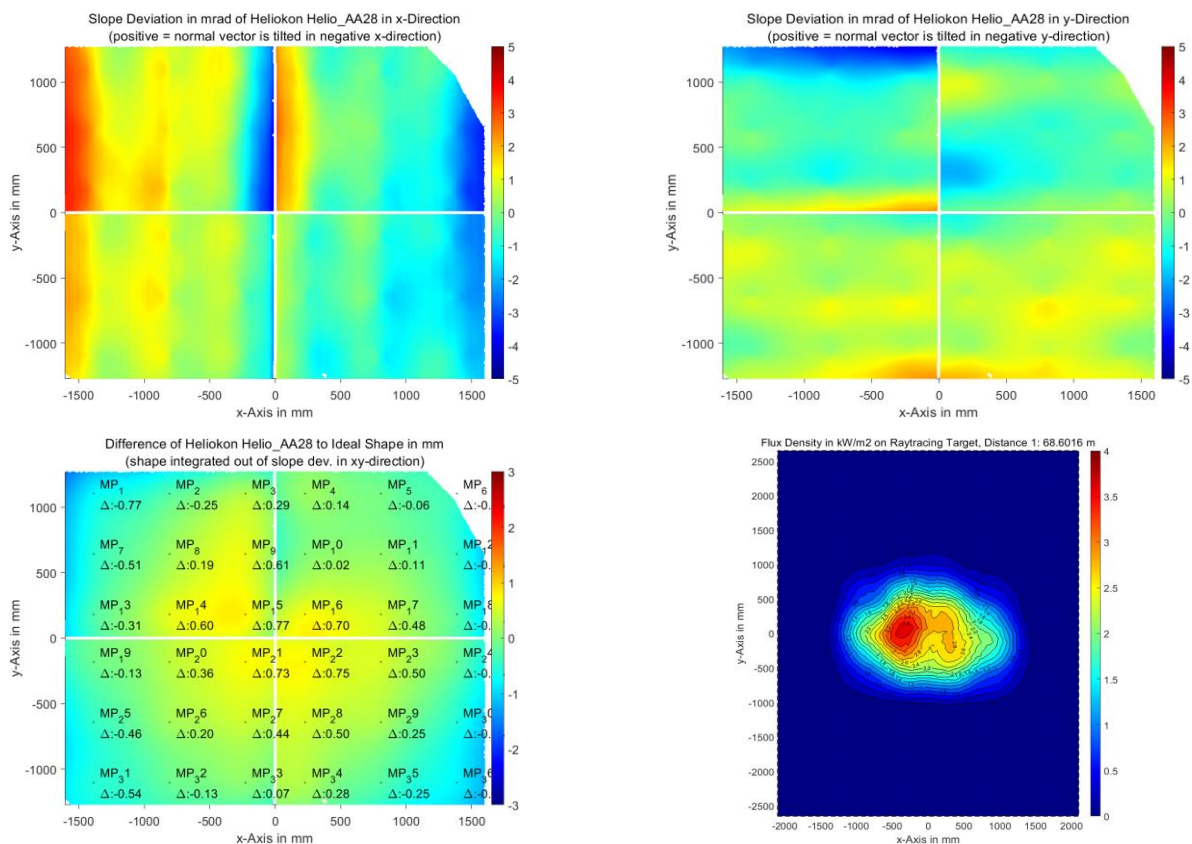
Panel:	Helio_AA28	Meas. Date:	08.09.2021 - 21:10:43
Paneltype:	Heliostat	Operator:	DLR
Setup:	MeasPosition	Comment:	
Negl. Rim:	0 mm	System:	QDec_2014-101
Orientation:	Mean Slope to Zero	Location:	Jülich

Result Overview

Quality: no specifications Evaluated Surface: 98.3 %

Value	Measurement	Specification	Description
SDx	1.29 mrad		Slope deviation in x-direction (rms)
SDy	0.90 mrad		Slope deviation in y-direction (rms)
ICAP_D1	99.39 %		Intercept on aperture

Result Graphs



Measurement System Information

Config File:	130929_Helio	QDec Version:	1.0.5207 (06.10.2021)
Evaluation Date:	12.10.2021 - 15:29:52		
Last Calibration:	14.08.2014		
PDF Filename:	...\MeasData_210908\Results\Helio\Helio_AA28\Helio_AA28_Rim0_Result_211012152952.pdf		