

QDec Measurement Summary

Measurement Information

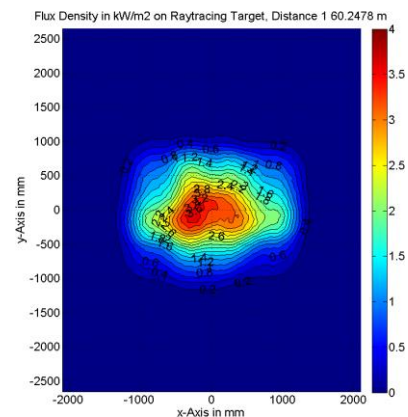
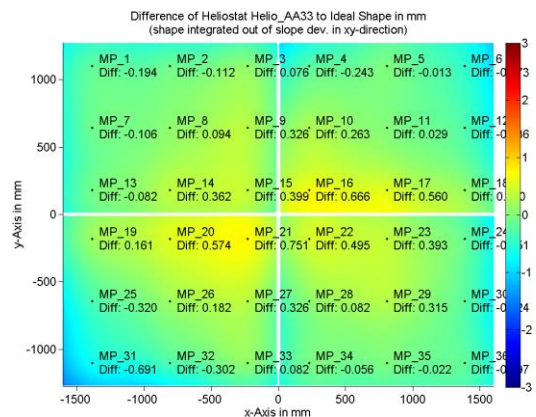
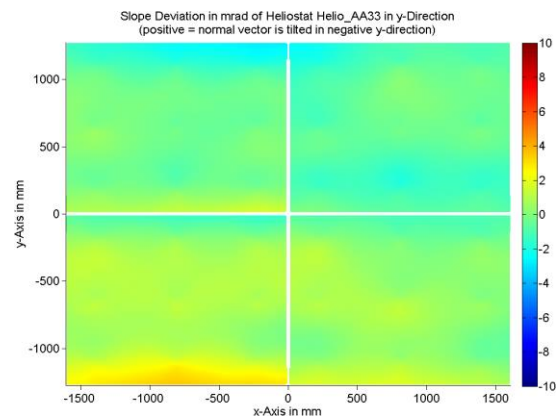
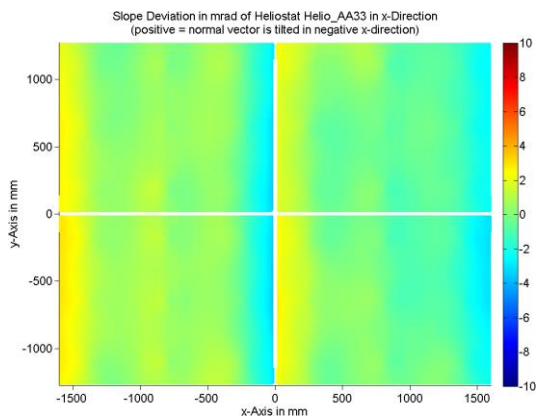
Panel:	Helio_AA33	Meas. Date:	27.07.2018 - 01:13:52
Paneltype:	Heliostat	Operator:	DLR
Setup:	MeasPosition	Comment:	
Negl. Rim:	0 mm	System:	QDec_2014-101
Orientation:	Mean Slope to Zero	Location:	Jülich

Result Overview

Quality: no specifications Evaluated Surface: 100.0 %

Value	Measurement	Specification	Description
SDx	1.20 mrad		Slope deviation in x-direction (rms)
SDy	0.97 mrad		Slope deviation in y-direction (rms)
ICAP_D1	99.55 %		Intercept on aperture

Result Graphs



Measurement System Information

Config File:	130929_Helio	QDec Version:	3.1.4555 (13.03.2017)
Evaluation Date:	13.08.2018 - 10:38:11		
Last Calibration:	14.08.2014		
PDF Filename:	...\MeasData_180726\Results\Helio\Helio_AA33\Helio_AA33_Rim0_Result_180813103811.pdf		