

QDec Measurement Summary

Measurement Information

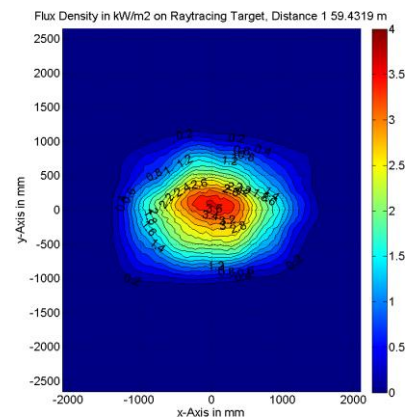
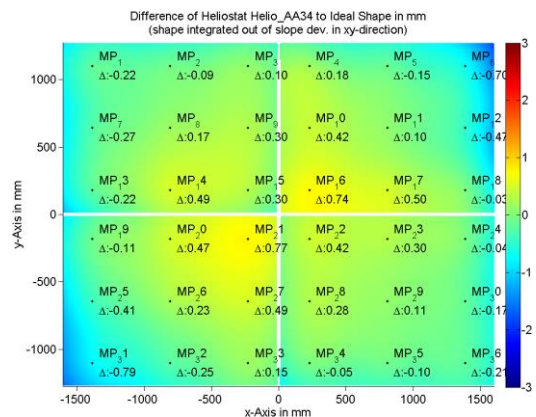
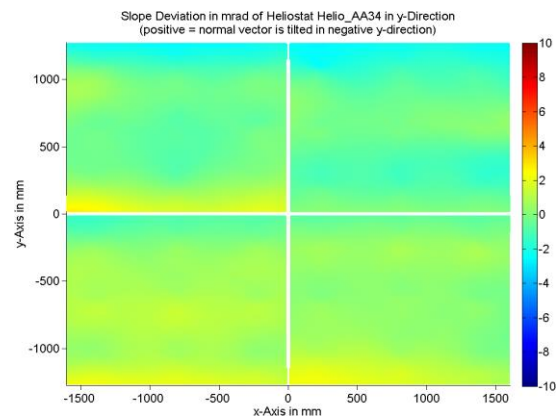
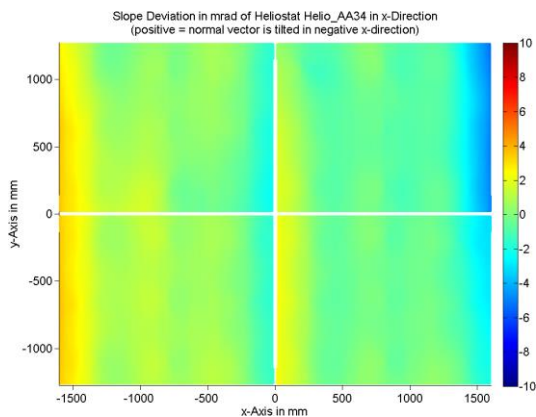
Panel:	Helio_AA34	Meas. Date:	14.11.2019 - 18:00:35
Paneltype:	Heliostat	Operator:	DLR
Setup:	MeasPosition	Comment:	
Negl. Rim:	0 mm	System:	QDec_2014-101
Orientation:	Mean Slope to Zero	Location:	Jülich

Result Overview

Quality: no specifications Evaluated Surface: 100.0 %

Value	Measurement	Specification	Description
SDx	1.33 mrad		Slope deviation in x-direction (rms)
SDy	0.93 mrad		Slope deviation in y-direction (rms)
ICAP_D1	99.59 %		Intercept on aperture

Result Graphs



Measurement System Information

Config File:	130929_Helio	QDec Version:	3.1.4859 (31.10.2018)
Evaluation Date:	15.11.2019 - 08:47:23		
Last Calibration:	14.08.2014		
PDF Filename:	T:\191114_SKT_\Results\Helio\Helio_AA34\Helio_AA34_Rim0_Result_191115084723.pdf		