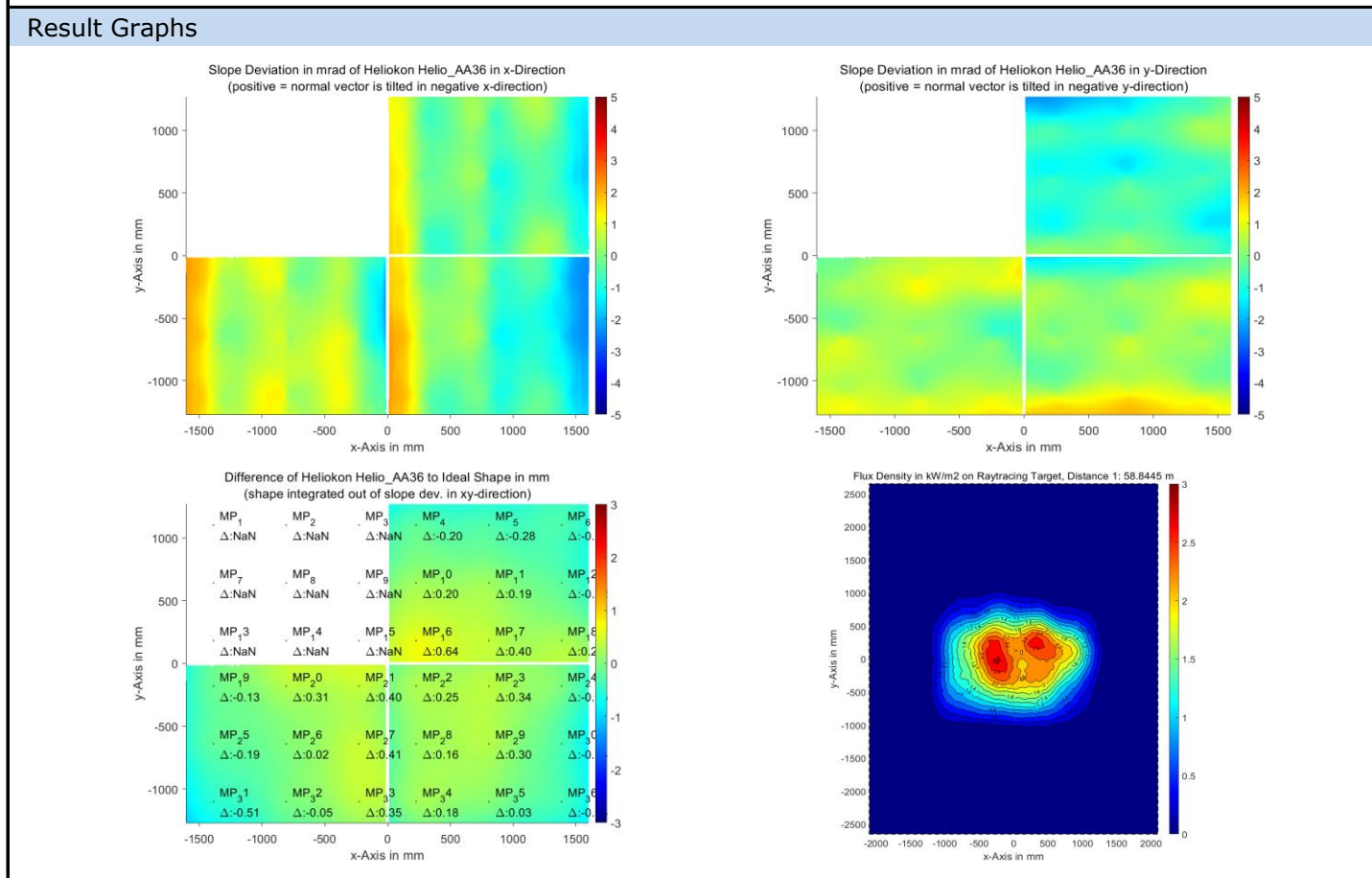


QDec Measurement Summary

Measurement Information			
Panel:	Helio_AA36	Meas. Date:	08.09.2021 - 21:16:09
Paneltype:	Heliostat	Operator:	DLR
Setup:	MeasPosition	Comment:	
Negl. Rim:	0 mm	System:	QDec_2014-101
Orientation:	Mean Slope to Zero	Location:	Jülich

Result Overview			
Quality:	no specifications	Evaluated Surface: 75.0 %	
Value	Measurement	Specification	Description
SDx	0.91 mrad		Slope deviation in x-direction (rms)
SDy	0.73 mrad		Slope deviation in y-direction (rms)
ICAP_D1	99.60 %		Intercept on aperture



Measurement System Information			
Config File:	130929_Helio	QDec Version:	1.0.5207 (06.10.2021)
Evaluation Date:	12.10.2021 - 15:42:51		
Last Calibration:	14.08.2014		
PDF Filename:	...\MeasData_210908\Results\Helio\Helio_AA36\Helio_AA36_Rim0_Result_211012154251.pdf		