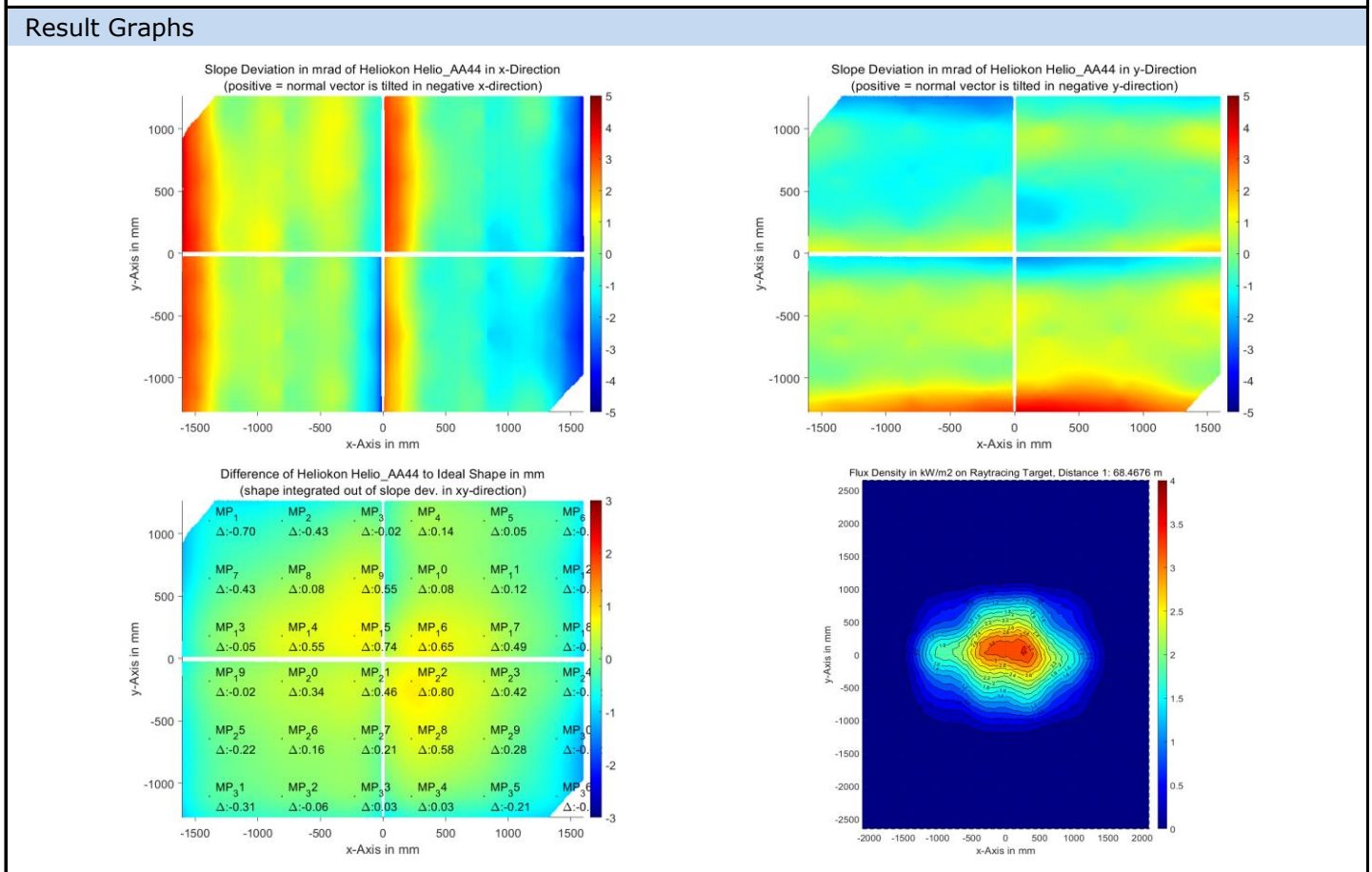


# QDec Measurement Summary

Measurement Information			
<b>Panel:</b>	Helio_AA44	<b>Meas. Date:</b>	03.03.2022 - 19:32:49
<b>Paneltype:</b>	Heliostat	<b>Operator:</b>	CSP-Services
<b>Setup:</b>	MeasPosition	<b>Comment:</b>	
<b>Negl. Rim:</b>	0 mm	<b>System:</b>	QDec_2014-101
<b>Orientation:</b>	Mean Slope to Zero	<b>Location:</b>	Jülich

Result Overview			
<b>Quality:</b>	no specifications	Evaluated Surface: 98.0 %	
Value	Measurement	Specification	Description
SDx	1.38 mrad		Slope deviation in x-direction (rms)
SDy	1.05 mrad		Slope deviation in y-direction (rms)
ICAP_D1	99.38 %		Intercept on aperture



Measurement System Information			
<b>Config File:</b>	130929_Helio	<b>QDec Version:</b>	1.0.5207 (06.10.2021)
<b>Evaluation Date:</b>	07.03.2022 - 13:18:59		
<b>Last Calibration:</b>	14.08.2014		
<b>PDF Filename:</b>	...\MeasData_220303\Results\Helio\Helio_AA44\Helio_AA44_Rim0_Result_220307131859.pdf		