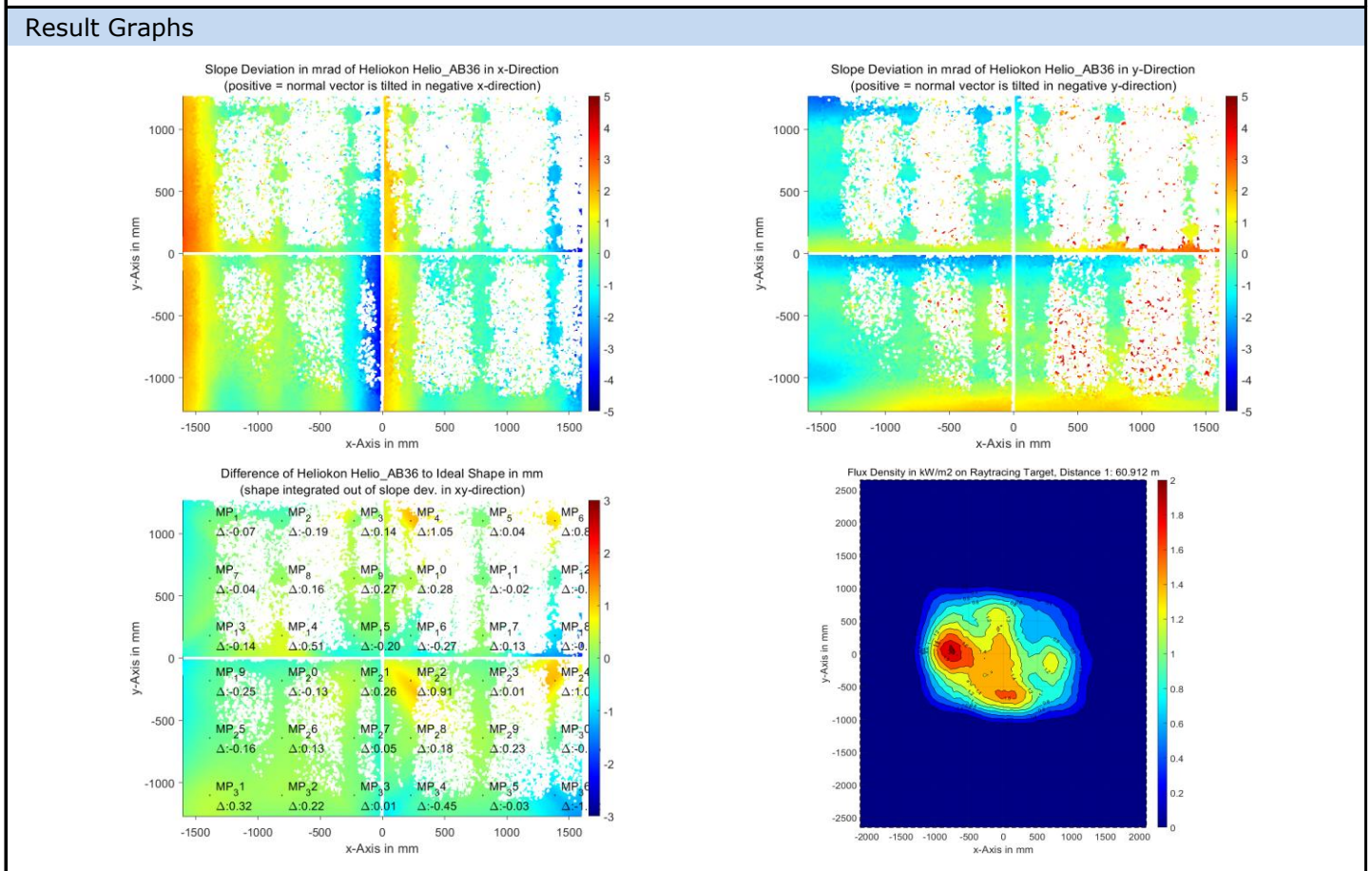


QDec Measurement Summary

Measurement Information			
Panel:	Helio_AB36	Meas. Date:	19.08.2021 - 23:10:20
Paneltype:	Heliostat	Operator:	DLR
Setup:	MeasPosition	Comment:	
Negl. Rim:	0 mm	System:	QDec_2014-101
Orientation:	Mean Slope to Zero	Location:	Jülich

Result Overview			
Quality:	no specifications	Evaluated Surface: 59.2 %	
Value	Measurement	Specification	Description
SDx	1.23 mrad		Slope deviation in x-direction (rms)
SDy	1.31 mrad		Slope deviation in y-direction (rms)
ICAP_D1	99.53 %		Intercept on aperture



Measurement System Information			
Config File:	130929_Helio	QDec Version:	1.0.5207 (06.10.2021)
Evaluation Date:	12.10.2021 - 14:32:23		
Last Calibration:	14.08.2014		
PDF Filename:	...\MeasData_210819\Results\Helio\Helio_AB36\Helio_AB36_Rim0_Result_211012143223.pdf		