

# QDec Measurement Summary

## Measurement Information

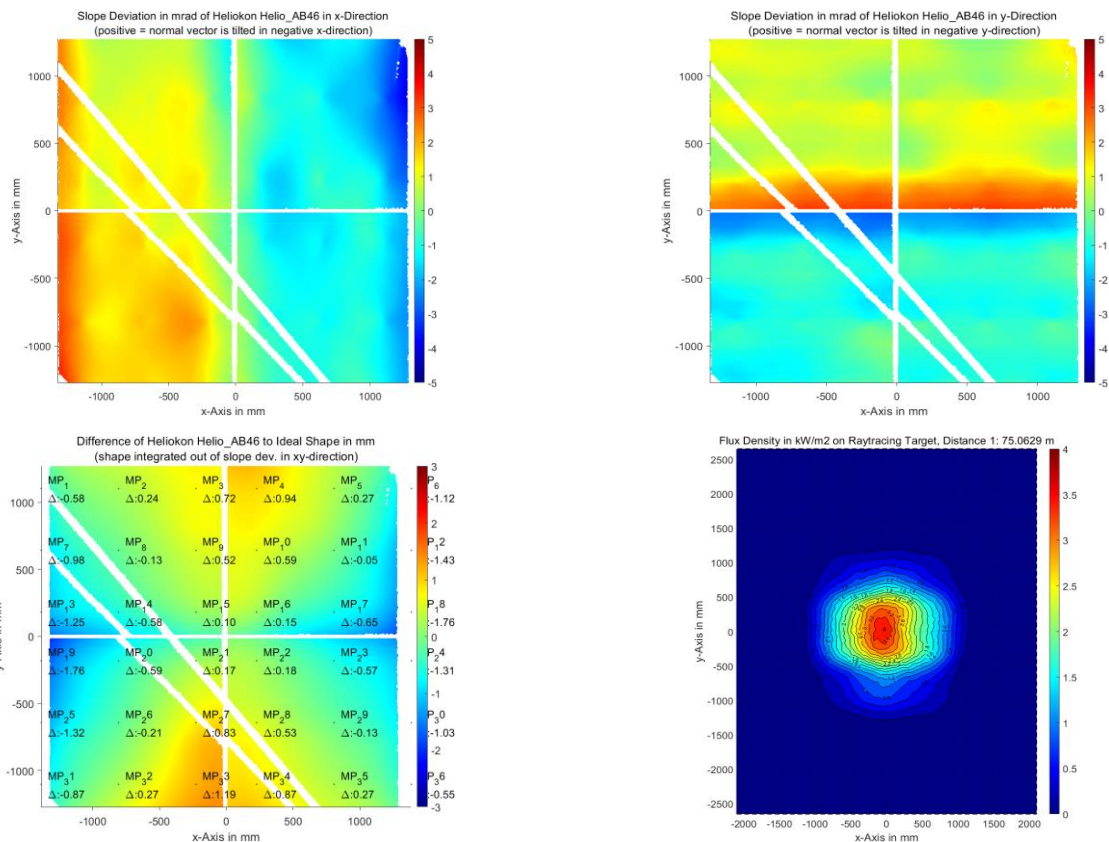
<b>Panel:</b>	Helio_AB46	<b>Meas. Date:</b>	07.09.2023 - 23:23:10
<b>Paneltype:</b>	Heliostat	<b>Operator:</b>	DLR
<b>Setup:</b>	MeasPosition	<b>Comment:</b>	
<b>Negl. Rim:</b>	0 mm	<b>System:</b>	QDec_2014-101
<b>Orientation:</b>	Mean Slope to Zero	<b>Location:</b>	Jülich

## Result Overview

**Quality:** no specifications Evaluated Surface: 77.2 %

Value	Measurement	Specification	Description
SDx	1.45 mrad		Slope deviation in x-direction (rms)
SDy	1.25 mrad		Slope deviation in y-direction (rms)
ICAP_D1	99.29 %		Intercept on aperture

## Result Graphs



## Measurement System Information

<b>Config File:</b>	130929_Helio	<b>QDec Version:</b>	1.0.5229 (23.02.2022)
<b>Evaluation Date:</b>	18.09.2023 - 11:22:32		
<b>Last Calibration:</b>	14.08.2014		
<b>PDF Filename:</b>	...\MeasData_230907_2\Results\Helio\Helio_AB46\Helio_AB46_Rim0_Result_230918112232.pdf		