

QDec Measurement Summary

Measurement Information

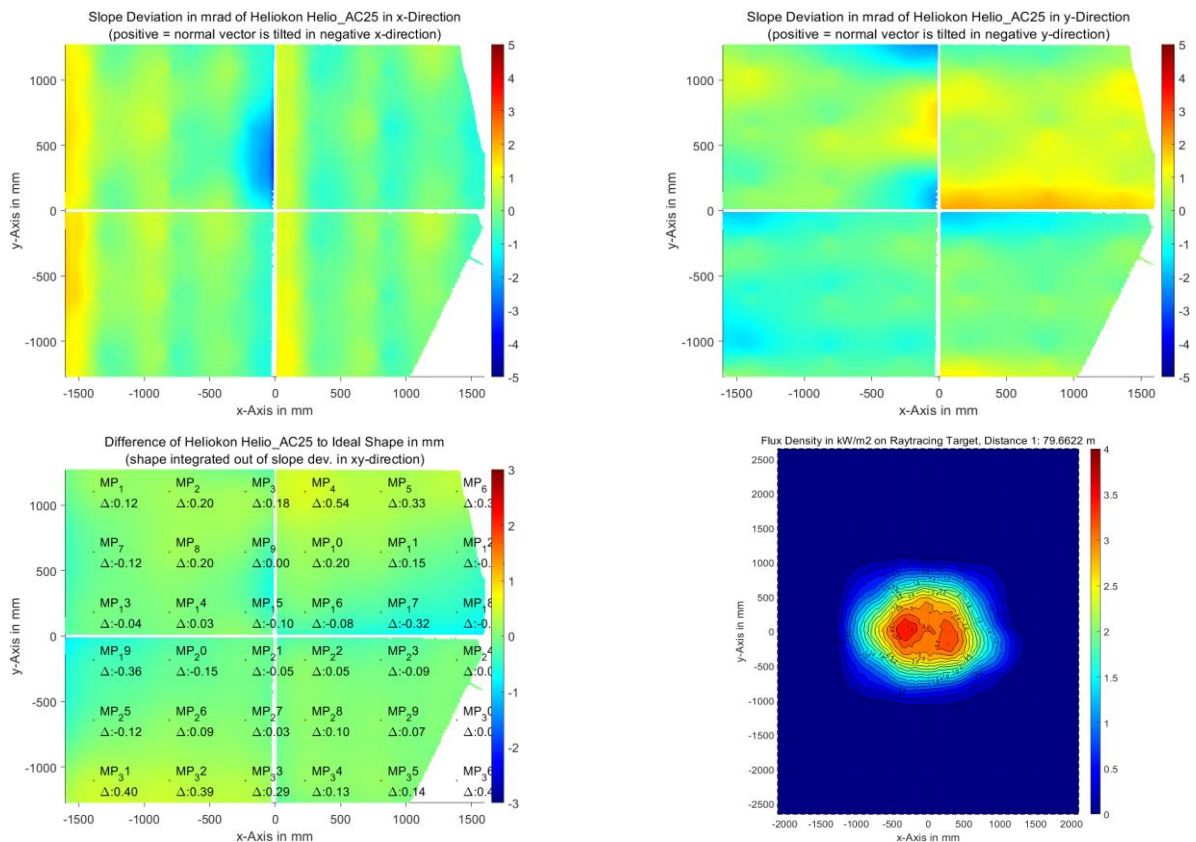
Panel:	Helio_AC25	Meas. Date:	09.09.2021 - 23:07:49
Paneltype:	Heliostat	Operator:	DLR
Setup:	MeasPosition	Comment:	
Negl. Rim:	0 mm	System:	QDec_2014-101
Orientation:	Mean Slope to Zero	Location:	Jülich

Result Overview

Quality: no specifications Evaluated Surface: 94.5 %

Value	Measurement	Specification	Description
SDx	0.60 mrad		Slope deviation in x-direction (rms)
SDy	0.71 mrad		Slope deviation in y-direction (rms)
ICAP_D1	99.17 %		Intercept on aperture

Result Graphs



Measurement System Information

Config File:	130929_Helio	QDec Version:	1.0.5207 (06.10.2021)
Evaluation Date:	13.10.2021 - 11:46:09		
Last Calibration:	14.08.2014		
PDF Filename:	...\MeasData_210909\Results\Helio\Helio_AC25\Helio_AC25_Rim0_Result_211013114609.pdf		