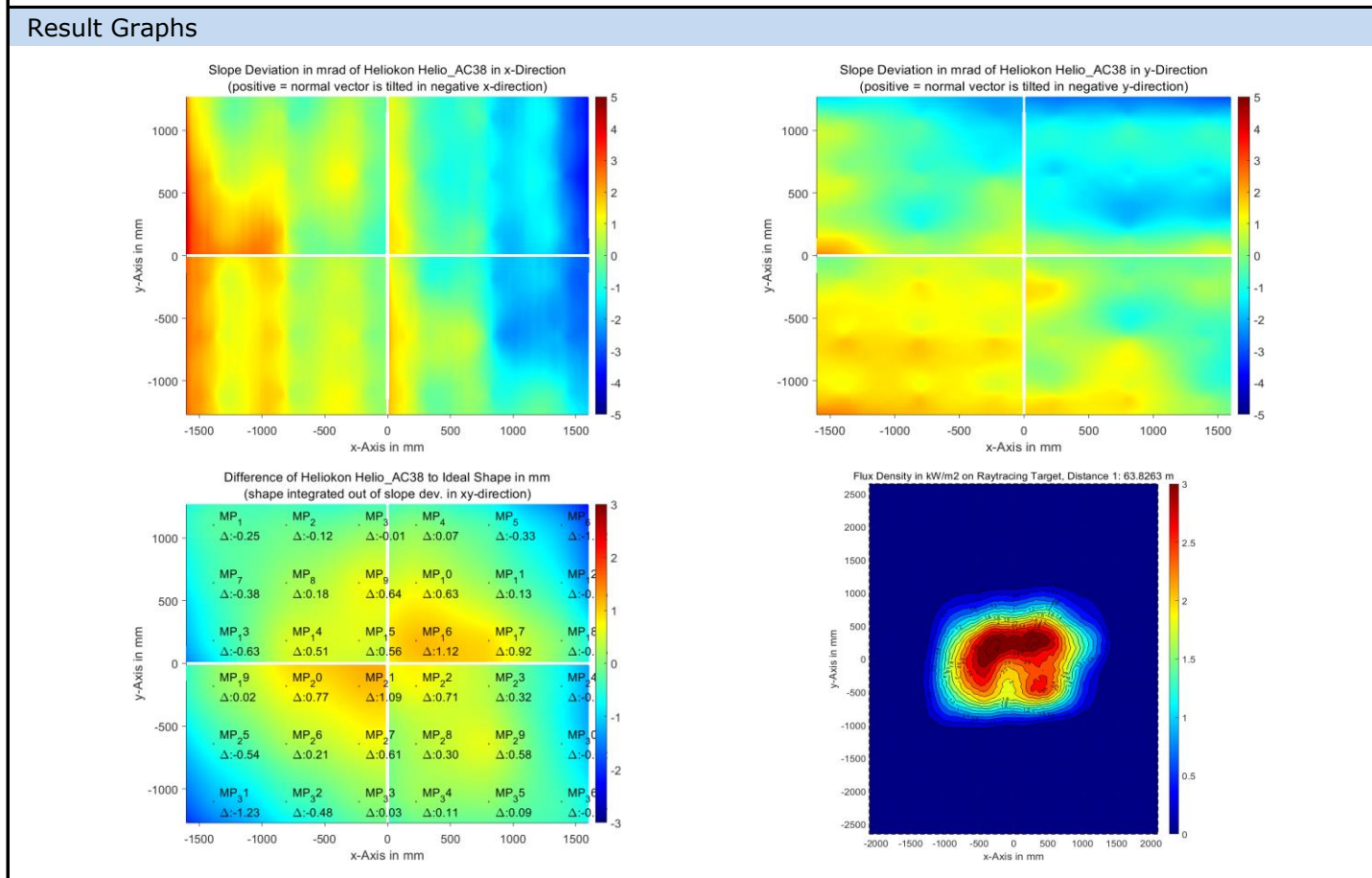


QDec Measurement Summary

Measurement Information			
Panel:	Helio_AC38	Meas. Date:	08.09.2021 - 23:18:02
Paneltype:	Heliostat	Operator:	DLR
Setup:	MeasPosition	Comment:	
Negl. Rim:	0 mm	System:	QDec_2014-101
Orientation:	Mean Slope to Zero	Location:	Jülich

Result Overview			
Quality:	no specifications	Evaluated Surface: 100.0 %	
Value	Measurement	Specification	Description
SDx	1.35 mrad		Slope deviation in x-direction (rms)
SDy	1.11 mrad		Slope deviation in y-direction (rms)
ICAP_D1	99.49 %		Intercept on aperture



Measurement System Information			
Config File:	130929_Helio	QDec Version:	1.0.5207 (06.10.2021)
Evaluation Date:	12.10.2021 - 15:36:17		
Last Calibration:	14.08.2014		
PDF Filename:	...\MeasData_210908\Results\Helio\Helio_AC38\Helio_AC38_Rim0_Result_211012153617.pdf		