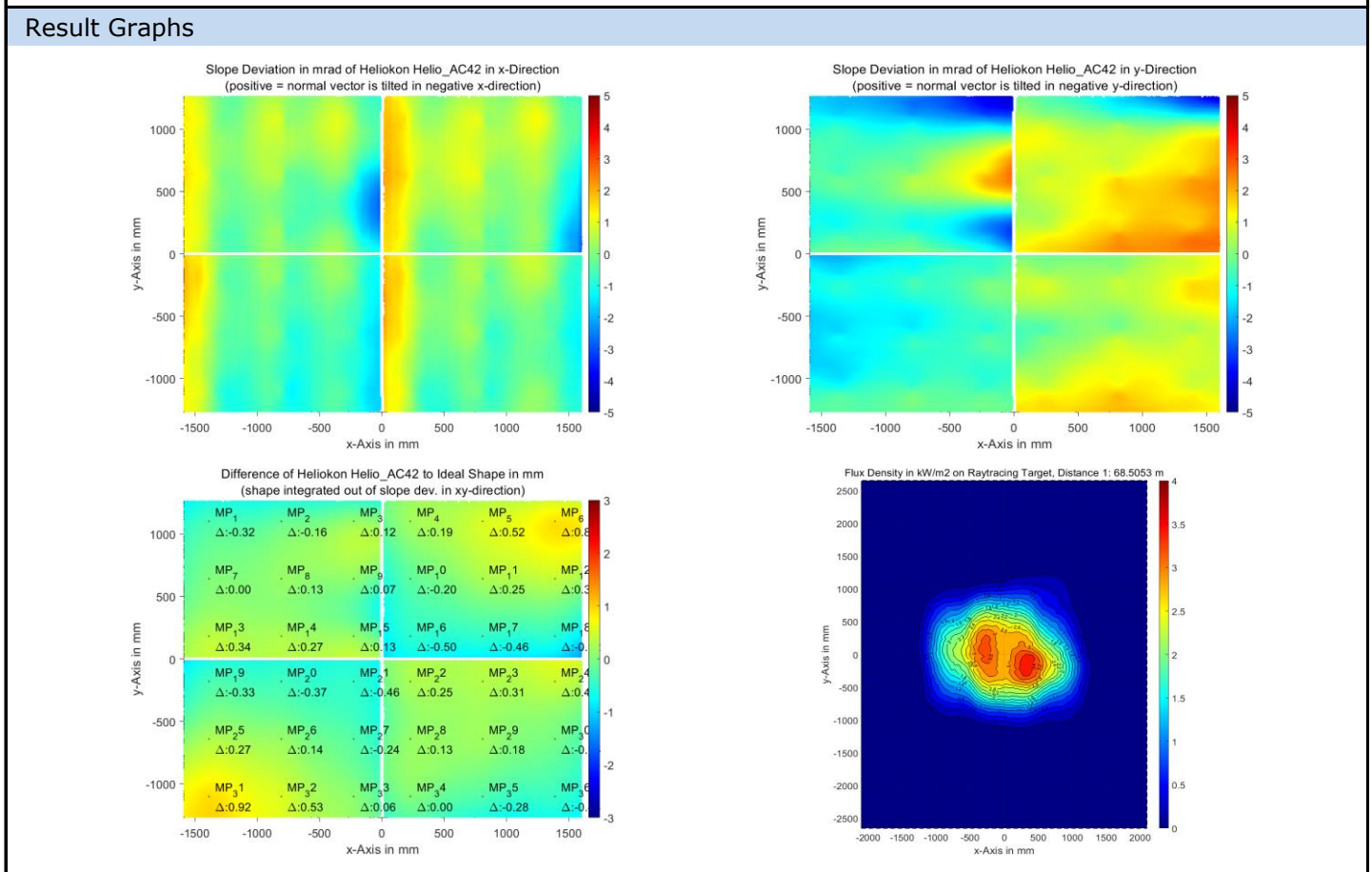


QDec Measurement Summary

Measurement Information			
Panel:	Helio_AC42	Meas. Date:	07.09.2023 - 23:05:45
Paneltype:	Heliostat	Operator:	DLR
Setup:	MeasPosition	Comment:	
Negl. Rim:	0 mm	System:	QDec_2014-101
Orientation:	Mean Slope to Zero	Location:	Jÿlich

Result Overview			
Quality:	no specifications	Evaluated Surface: 99.3 %	
Value	Measurement	Specification	Description
SDx	0.76 mrad		Slope deviation in x-direction (rms)
SDy	1.19 mrad		Slope deviation in y-direction (rms)
ICAP_D1	99.39 %		Intercept on aperture



Measurement System Information			
Config File:	130929_Helio	QDec Version:	1.0.5229 (23.02.2022)
Evaluation Date:	18.09.2023 - 11:44:17		
Last Calibration:	14.08.2014		
PDF Filename:	...\MeasData_230907_2\Results\Helio\Helio_AC42\Helio_AC42_Rim0_Result_230918114417.pdf		