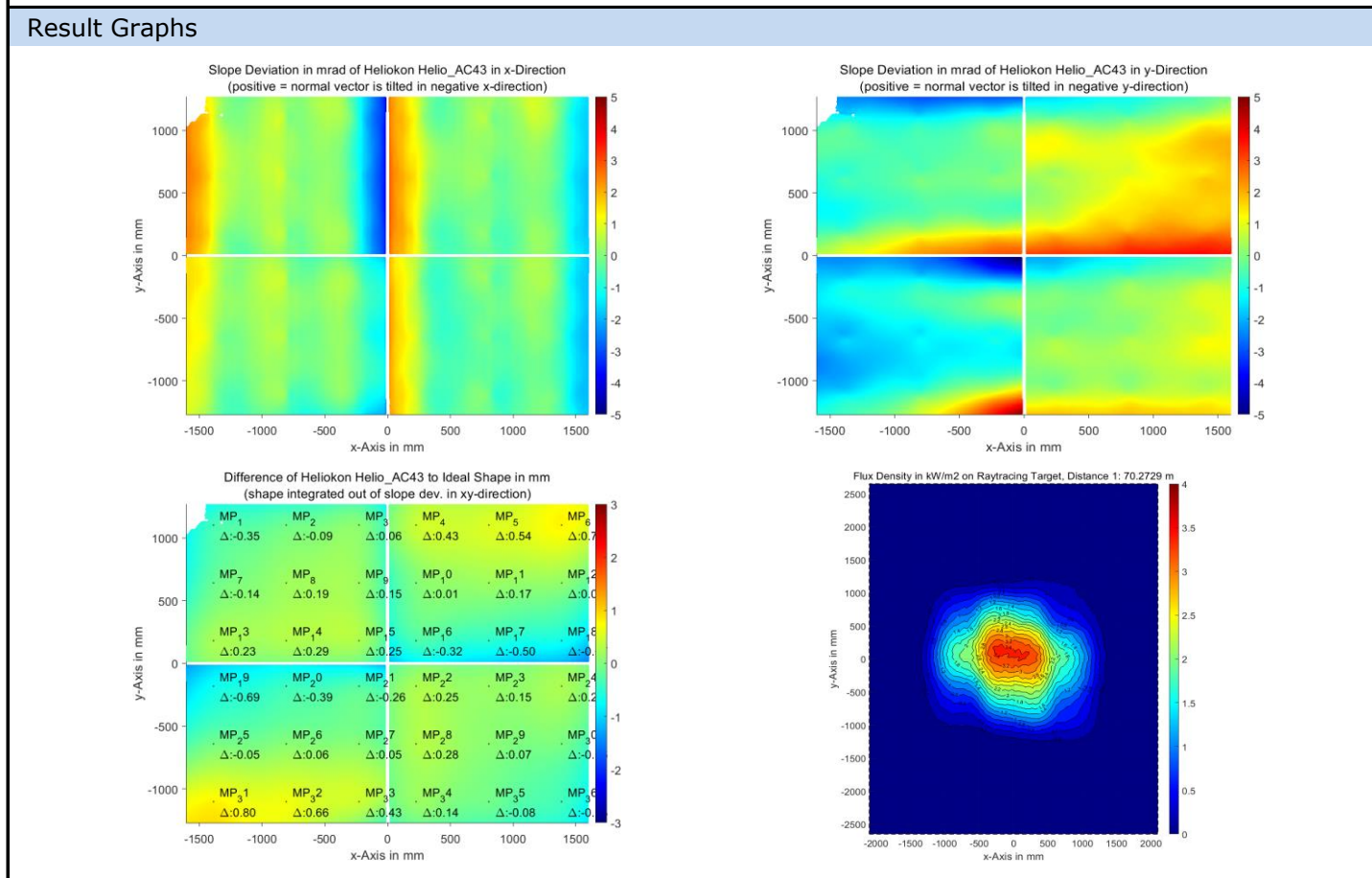


QDec Measurement Summary

Measurement Information			
Panel:	Helio_AC43	Meas. Date:	08.09.2021 - 23:23:20
Paneltype:	Heliostat	Operator:	DLR
Setup:	MeasPosition	Comment:	
Negl. Rim:	0 mm	System:	QDec_2014-101
Orientation:	Mean Slope to Zero	Location:	Jülich

Result Overview			
Quality:	no specifications	Evaluated Surface: 99.6 %	
Value	Measurement	Specification	Description
SDx	0.92 mrad		Slope deviation in x-direction (rms)
SDy	1.29 mrad		Slope deviation in y-direction (rms)
ICAP_D1	99.36 %		Intercept on aperture



Measurement System Information			
Config File:	130929_Helio	QDec Version:	1.0.5207 (06.10.2021)
Evaluation Date:	12.10.2021 - 15:48:35		
Last Calibration:	14.08.2014		
PDF Filename:	...\MeasData_210908\Results\Helio\Helio_AC43\Helio_AC43_Rim0_Result_211012154835.pdf		