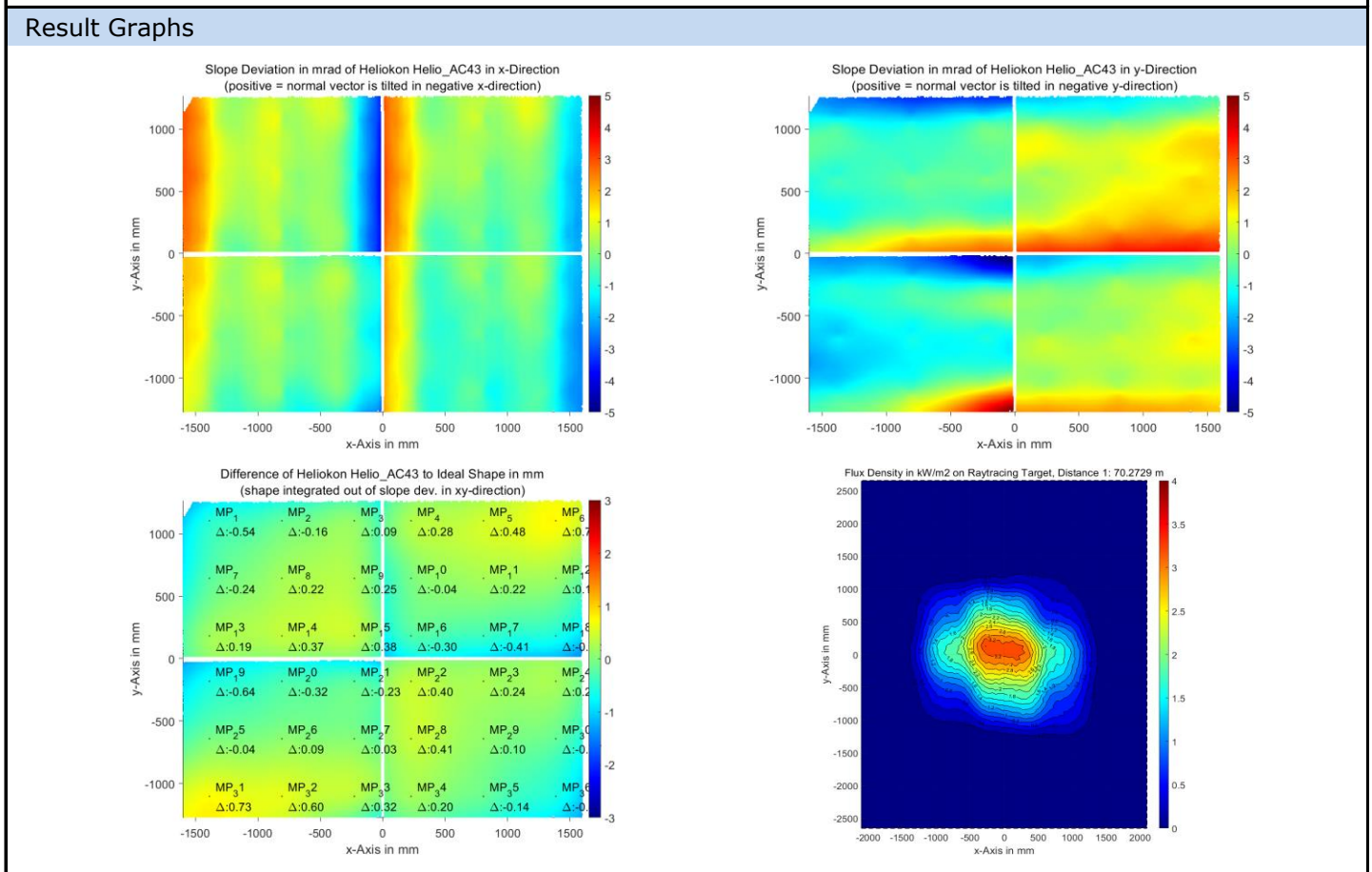


QDec Measurement Summary

Measurement Information			
Panel:	Helio_AC43	Meas. Date:	07.09.2023 - 23:06:28
Paneltype:	Heliostat	Operator:	DLR
Setup:	MeasPosition	Comment:	
Negl. Rim:	0 mm	System:	QDec_2014-101
Orientation:	Mean Slope to Zero	Location:	Jylich

Result Overview			
Quality:	no specifications	Evaluated Surface: 99.0 %	
Value	Measurement	Specification	Description
SDx	1.06 mrad		Slope deviation in x-direction (rms)
SDy	1.31 mrad		Slope deviation in y-direction (rms)
ICAP_D1	99.34 %		Intercept on aperture



Measurement System Information			
Config File:	130929_Helio	QDec Version:	1.0.5229 (23.02.2022)
Evaluation Date:	18.09.2023 - 11:47:49		
Last Calibration:	14.08.2014		
PDF Filename:	...\MeasData_230907_2\Results\Helio\Helio_AC43\Helio_AC43_Rim0_Result_230918114749.pdf		