

QDec Measurement Summary

Measurement Information

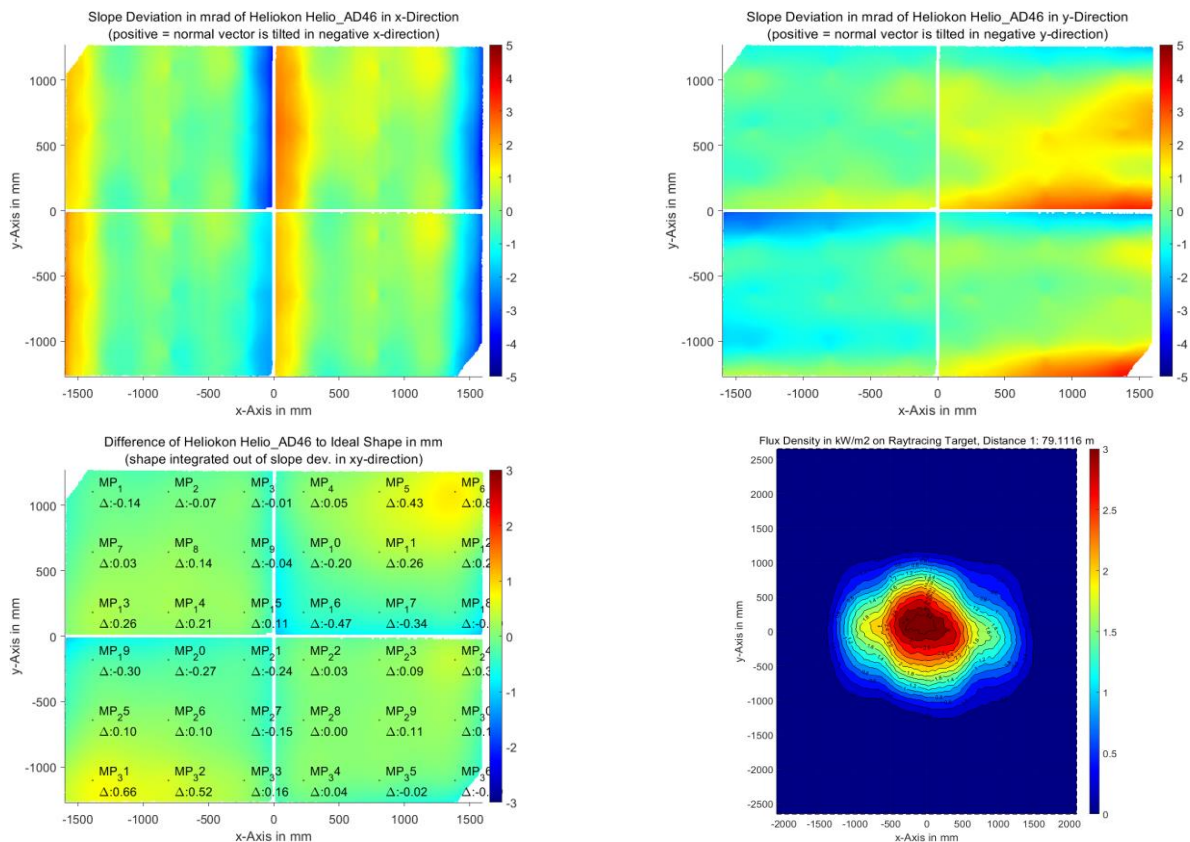
Panel:	Helio_AD46	Meas. Date:	07.09.2023 - 22:39:43
Paneltype:	Heliostat	Operator:	DLR
Setup:	MeasPosition	Comment:	
Negl. Rim:	0 mm	System:	QDec_2014-101
Orientation:	Mean Slope to Zero	Location:	Jylich

Result Overview

Quality: no specifications Evaluated Surface: 98.4 %

Value	Measurement	Specification	Description
SDx	1.03 mrad		Slope deviation in x-direction (rms)
SDy	0.96 mrad		Slope deviation in y-direction (rms)
ICAP_D1	99.19 %		Intercept on aperture

Result Graphs



Measurement System Information

Config File:	130929_Helio	QDec Version:	1.0.5229 (23.02.2022)
Evaluation Date:	18.09.2023 - 12:56:42		
Last Calibration:	14.08.2014		
PDF Filename:	...\MeasData_230907_2\Results\Helio\Helio_AD46\Helio_AD46_Rim0_Result_230918125642.pdf		