

QDec Measurement Summary

Measurement Information

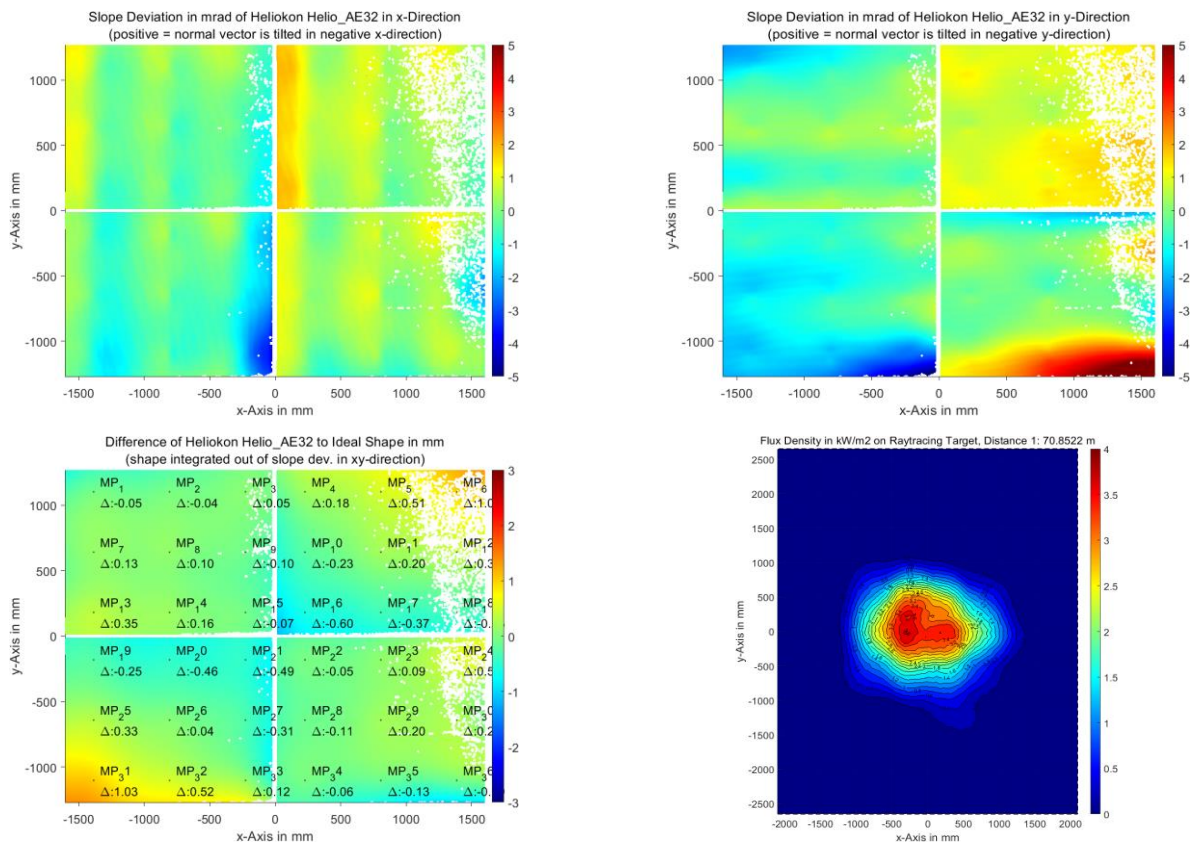
Panel:	Helio_AE32	Meas. Date:	07.09.2023 - 22:57:31
Paneltype:	Heliostat	Operator:	DLR
Setup:	MeasPosition	Comment:	
Negl. Rim:	0 mm	System:	QDec_2014-101
Orientation:	Mean Slope to Zero	Location:	Jylich

Result Overview

Quality: no specifications Evaluated Surface: 94.6 %

Value	Measurement	Specification	Description
SDx	0.76 mrad		Slope deviation in x-direction (rms)
SDy	1.23 mrad		Slope deviation in y-direction (rms)
ICAP_D1	99.38 %		Intercept on aperture

Result Graphs



Measurement System Information

Config File:	130929_Helio	QDec Version:	1.0.5229 (23.02.2022)
Evaluation Date:	18.09.2023 - 13:14:20		
Last Calibration:	14.08.2014		
PDF Filename:	...\MeasData_230907_2\Results\Helio\Helio_AE32\Helio_AE32_Rim0_Result_230918131420.pdf		