

QDec Measurement Summary

Measurement Information

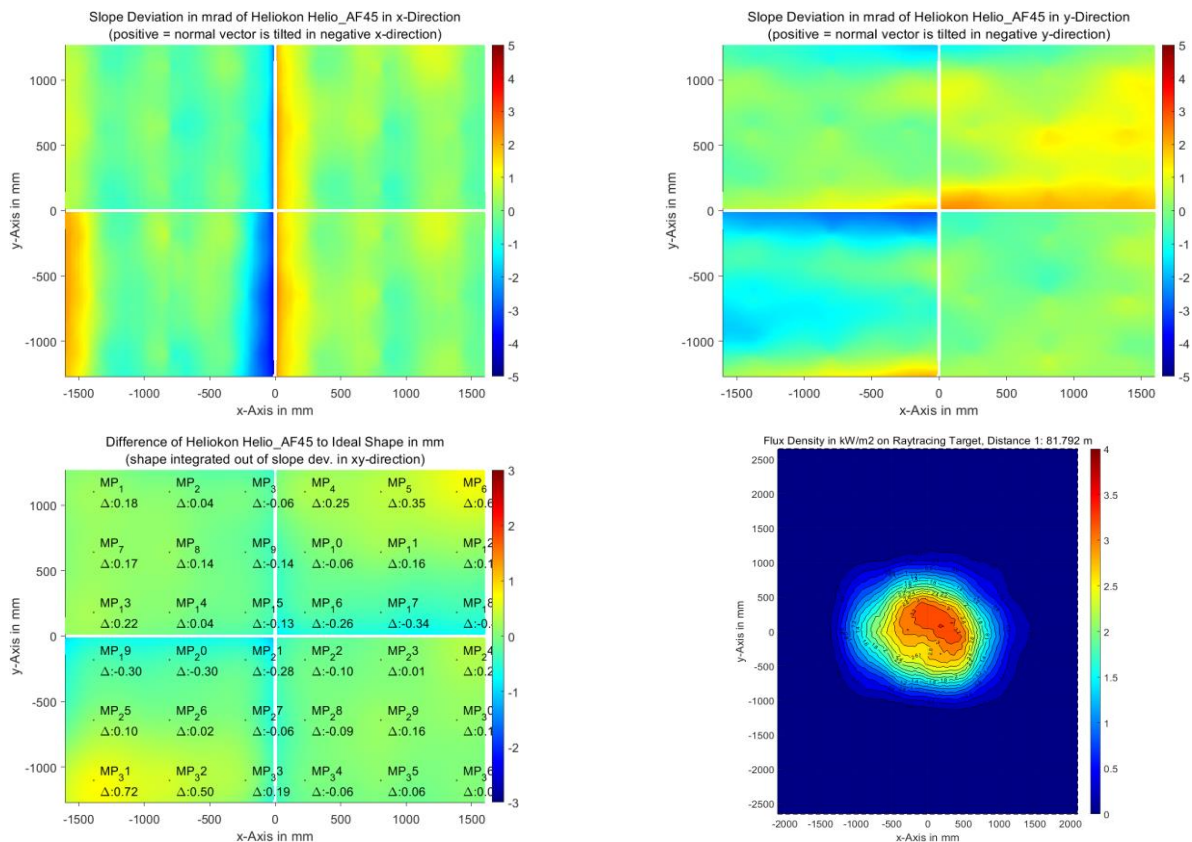
Panel:	Helio_AF45	Meas. Date:	07.09.2023 - 22:18:49
Paneltype:	Heliostat	Operator:	DLR
Setup:	MeasPosition	Comment:	
Negl. Rim:	0 mm	System:	QDec_2014-101
Orientation:	Mean Slope to Zero	Location:	Jylich

Result Overview

Quality: no specifications Evaluated Surface: 100.0 %

Value	Measurement	Specification	Description
SDx	0.77 mrad		Slope deviation in x-direction (rms)
SDy	0.82 mrad		Slope deviation in y-direction (rms)
ICAP_D1	99.16 %		Intercept on aperture

Result Graphs



Measurement System Information

Config File:	130929_Helio	QDec Version:	1.0.5229 (23.02.2022)
Evaluation Date:	18.09.2023 - 13:32:02		
Last Calibration:	14.08.2014		
PDF Filename:	...\MeasData_230907_2\Results\Helio\Helio_AF45\Helio_AF45_Rim0_Result_230918133202.pdf		