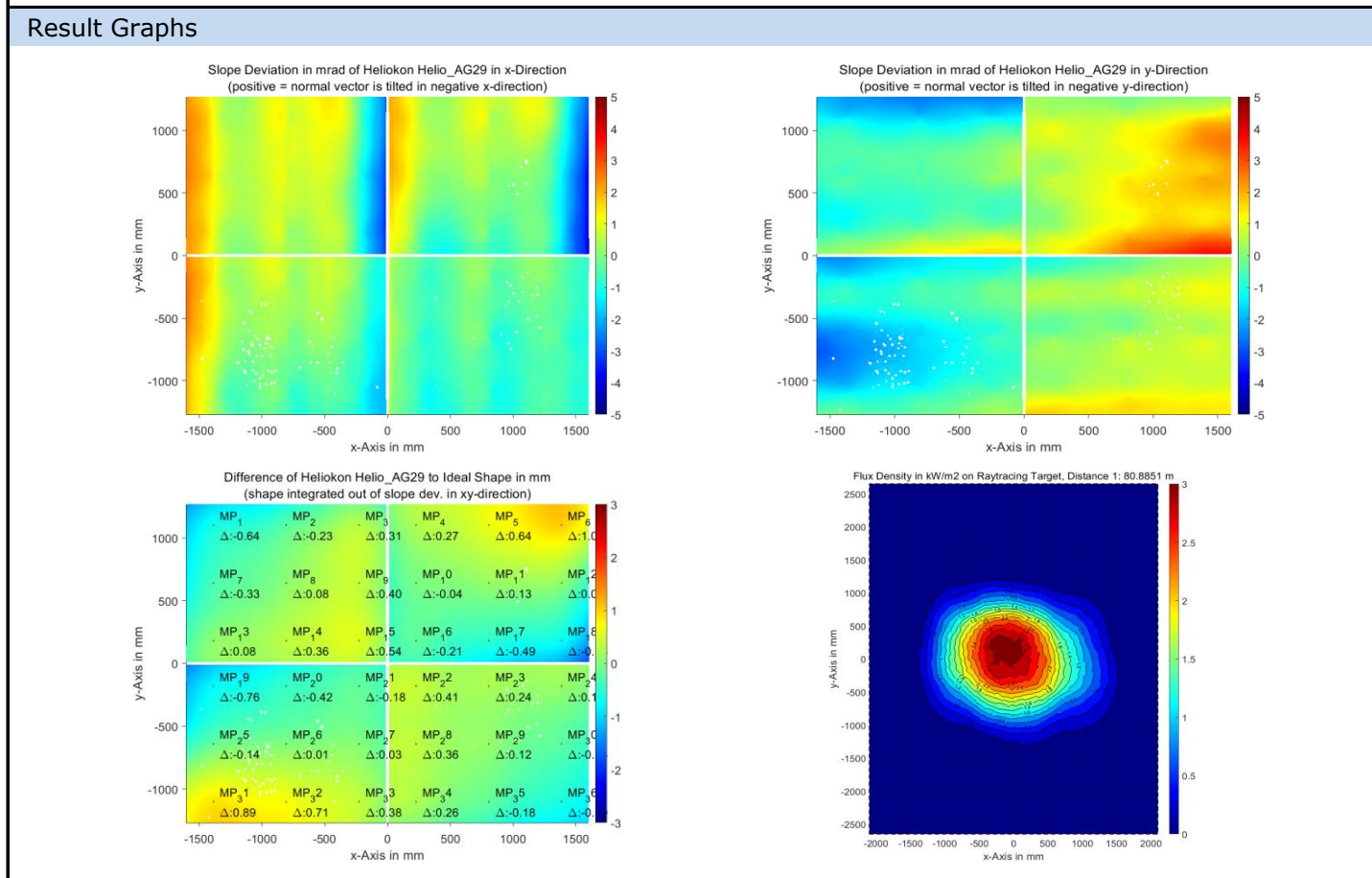


# QDec Measurement Summary

Measurement Information			
<b>Panel:</b>	Helio_AG29	<b>Meas. Date:</b>	09.09.2021 - 23:52:10
<b>Paneltype:</b>	Heliostat	<b>Operator:</b>	DLR
<b>Setup:</b>	MeasPosition	<b>Comment:</b>	
<b>Negl. Rim:</b>	0 mm	<b>System:</b>	QDec_2014-101
<b>Orientation:</b>	Mean Slope to Zero	<b>Location:</b>	Jülich

Result Overview			
<b>Quality:</b>	no specifications	Evaluated Surface: 99.9 %	
Value	Measurement	Specification	Description
SDx	0.99 mrad		Slope deviation in x-direction (rms)
SDy	1.14 mrad		Slope deviation in y-direction (rms)
ICAP_D1	99.15 %		Intercept on aperture



Measurement System Information			
Config File:	130929_Helio	QDec Version:	1.0.5207 (06.10.2021)
Evaluation Date:	13.10.2021 - 12:55:39		
Last Calibration:	14.08.2014		
PDF Filename:	...\MeasData_210909\Results\Helio\Helio_AG29\Helio_AG29_Rim0_Result_211013125539.pdf		