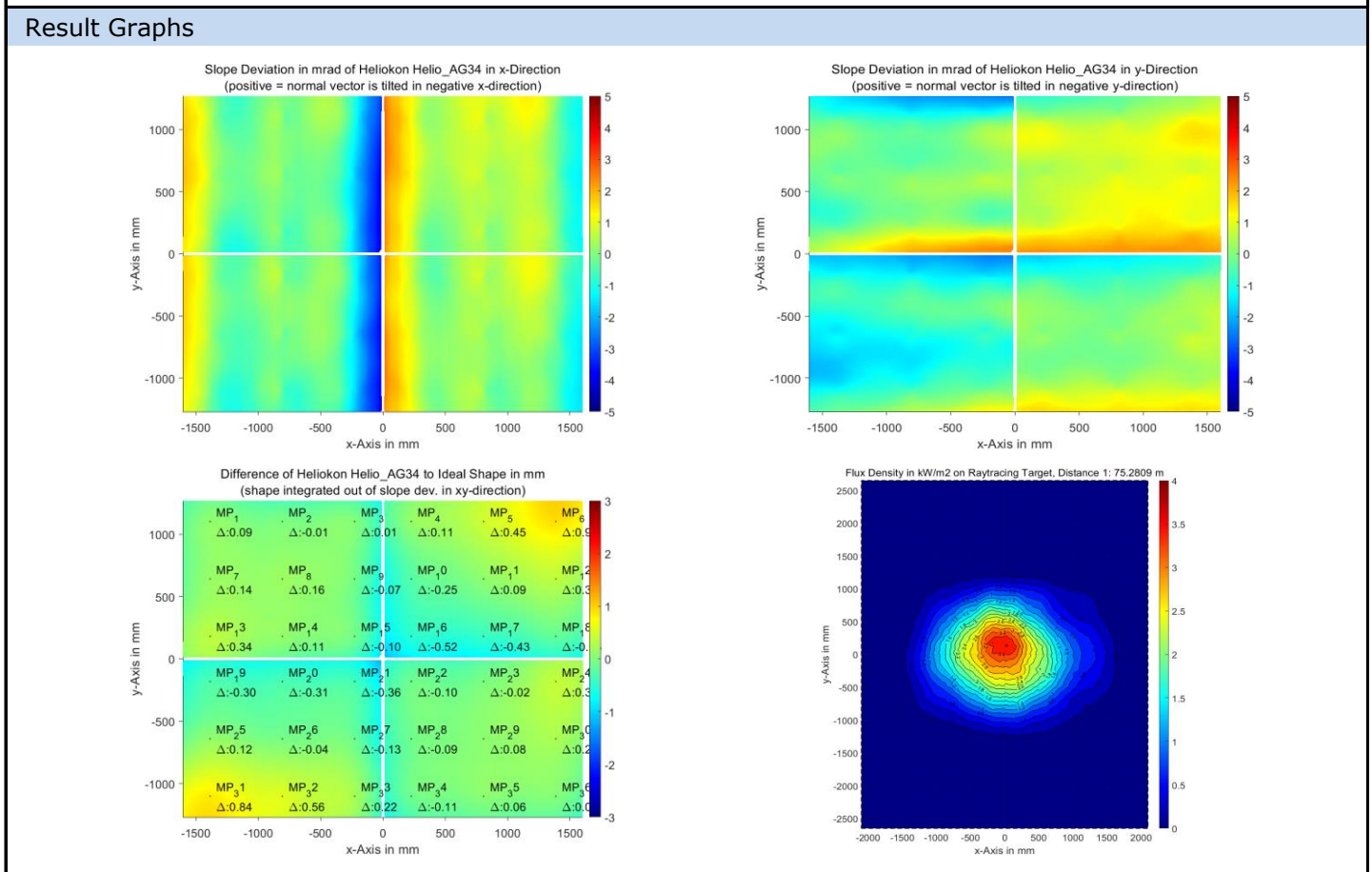


QDec Measurement Summary

| Measurement Information | | | |
|-------------------------|--------------------|--------------------|-----------------------|
| Panel: | Helio_AG34 | Meas. Date: | 09.09.2021 - 23:56:18 |
| Paneltype: | Heliostat | Operator: | DLR |
| Setup: | MeasPosition | Comment: | |
| Negl. Rim: | 0 mm | System: | QDec_2014-101 |
| Orientation: | Mean Slope to Zero | Location: | Jülich |

| Result Overview | | | |
|-----------------|-------------------|----------------------------|--------------------------------------|
| Quality: | no specifications | Evaluated Surface: 100.0 % | |
| Value | Measurement | Specification | Description |
| SDx | 1.02 mrad | | Slope deviation in x-direction (rms) |
| SDy | 0.95 mrad | | Slope deviation in y-direction (rms) |
| ICAP_D1 | 99.25 % | | Intercept on aperture |



| Measurement System Information | | | |
|--------------------------------|--|----------------------|-----------------------|
| Config File: | 130929_Helio | QDec Version: | 1.0.5207 (06.10.2021) |
| Evaluation Date: | 13.10.2021 - 12:58:07 | | |
| Last Calibration: | 14.08.2014 | | |
| PDF Filename: | ...\MeasData_210909\Results\Helio\Helio_AG34\Helio_AG34_Rim0_Result_211013125807.pdf | | |