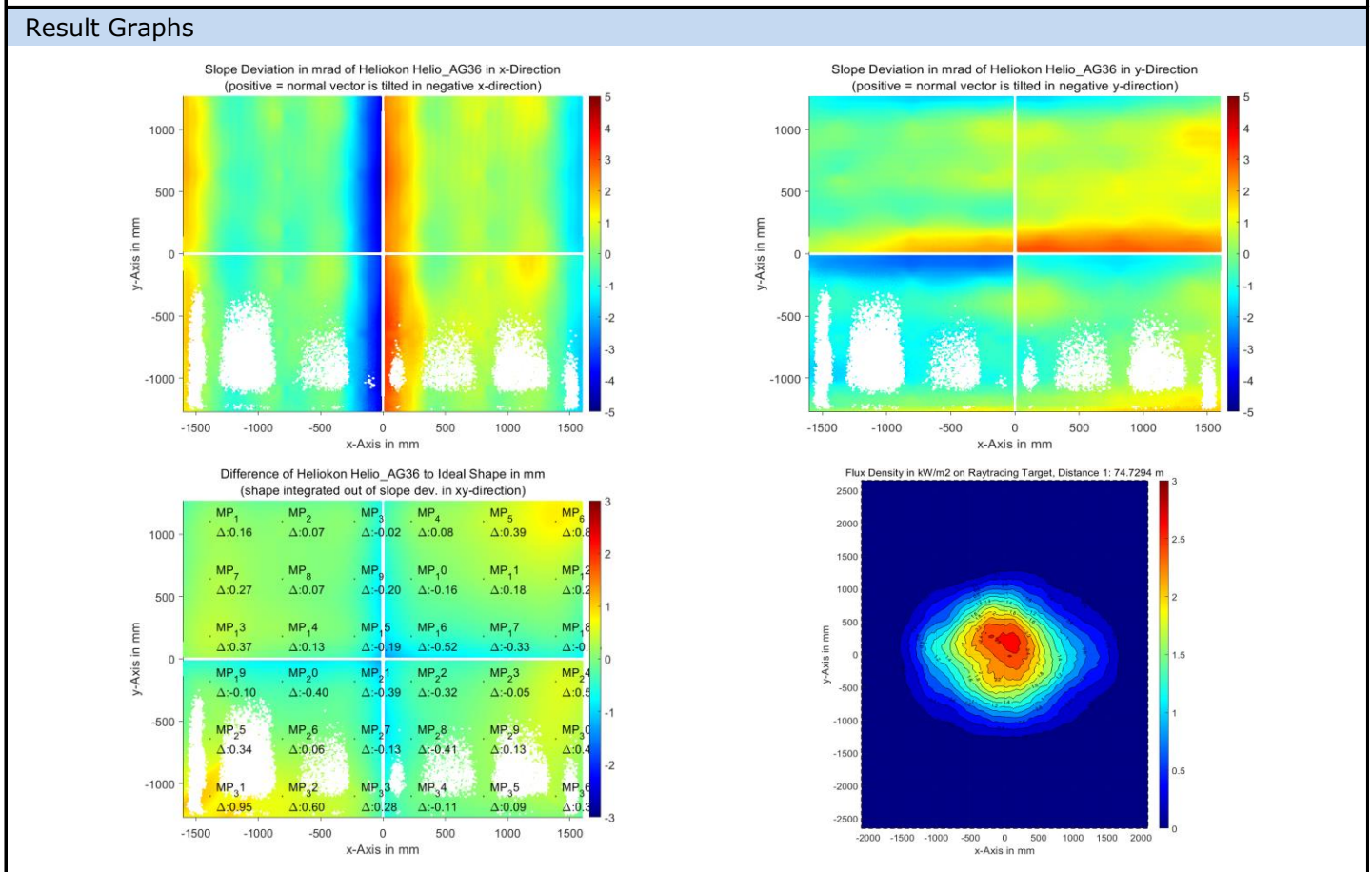


QDec Measurement Summary

Measurement Information			
Panel:	Helio_AG36	Meas. Date:	08.09.2021 - 22:17:56
Paneltype:	Heliostat	Operator:	DLR
Setup:	MeasPosition	Comment:	
Negl. Rim:	0 mm	System:	QDec_2014-101
Orientation:	Mean Slope to Zero	Location:	Jülich

Result Overview			
Quality:	no specifications	Evaluated Surface: 91.4 %	
Value	Measurement	Specification	Description
SDx	1.22 mrad		Slope deviation in x-direction (rms)
SDy	1.02 mrad		Slope deviation in y-direction (rms)
ICAP_D1	99.25 %		Intercept on aperture



Measurement System Information		
Config File:	130929_Helio	QDec Version: 1.0.5207 (06.10.2021)
Evaluation Date:	12.10.2021 - 16:25:05	
Last Calibration:	14.08.2014	
PDF Filename:	...\MeasData_210908\Results\Helio\Helio_AG36\Helio_AG36_Rim0_Result_211012162505.pdf	