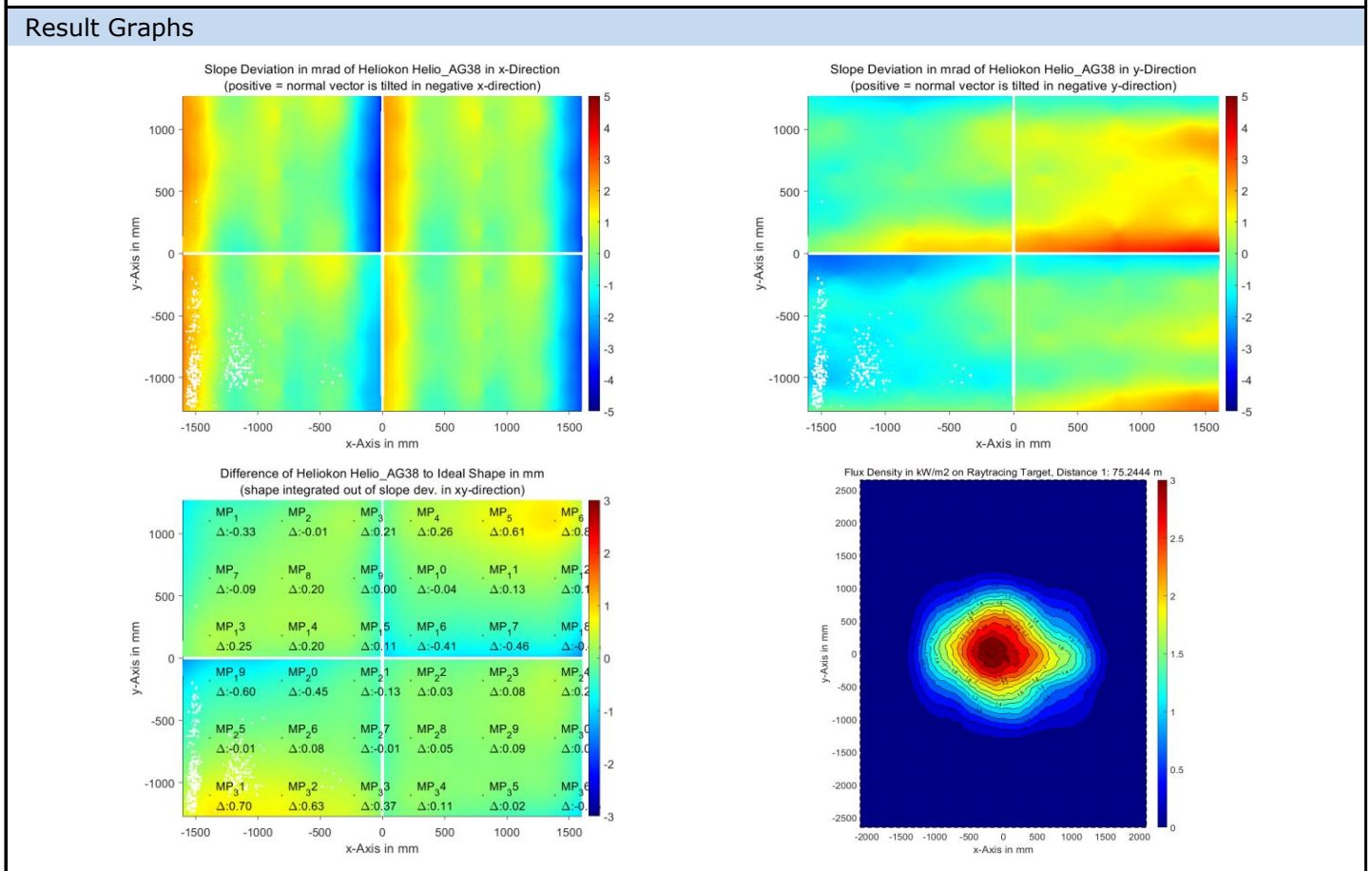


# QDec Measurement Summary

Measurement Information			
<b>Panel:</b>	Helio_AG38	<b>Meas. Date:</b>	10.09.2021 - 00:00:42
<b>Paneltype:</b>	Heliostat	<b>Operator:</b>	DLR
<b>Setup:</b>	MeasPosition	<b>Comment:</b>	
<b>Negl. Rim:</b>	0 mm	<b>System:</b>	QDec_2014-101
<b>Orientation:</b>	Mean Slope to Zero	<b>Location:</b>	Jülich

Result Overview			
<b>Quality:</b>	no specifications	Evaluated Surface: 99.6 %	
Value	Measurement	Specification	Description
SDx	1.06 mrad		Slope deviation in x-direction (rms)
SDy	1.08 mrad		Slope deviation in y-direction (rms)
ICAP_D1	99.25 %		Intercept on aperture



Measurement System Information			
<b>Config File:</b>	130929_Helio	<b>QDec Version:</b>	1.0.5207 (06.10.2021)
<b>Evaluation Date:</b>	13.10.2021 - 13:01:22		
<b>Last Calibration:</b>	14.08.2014		
<b>PDF Filename:</b>	...\MeasData_210909\Results\Helio\Helio_AG38\Helio_AG38_Rim0_Result_211013130122.pdf		