

QDec Measurement Summary

Measurement Information

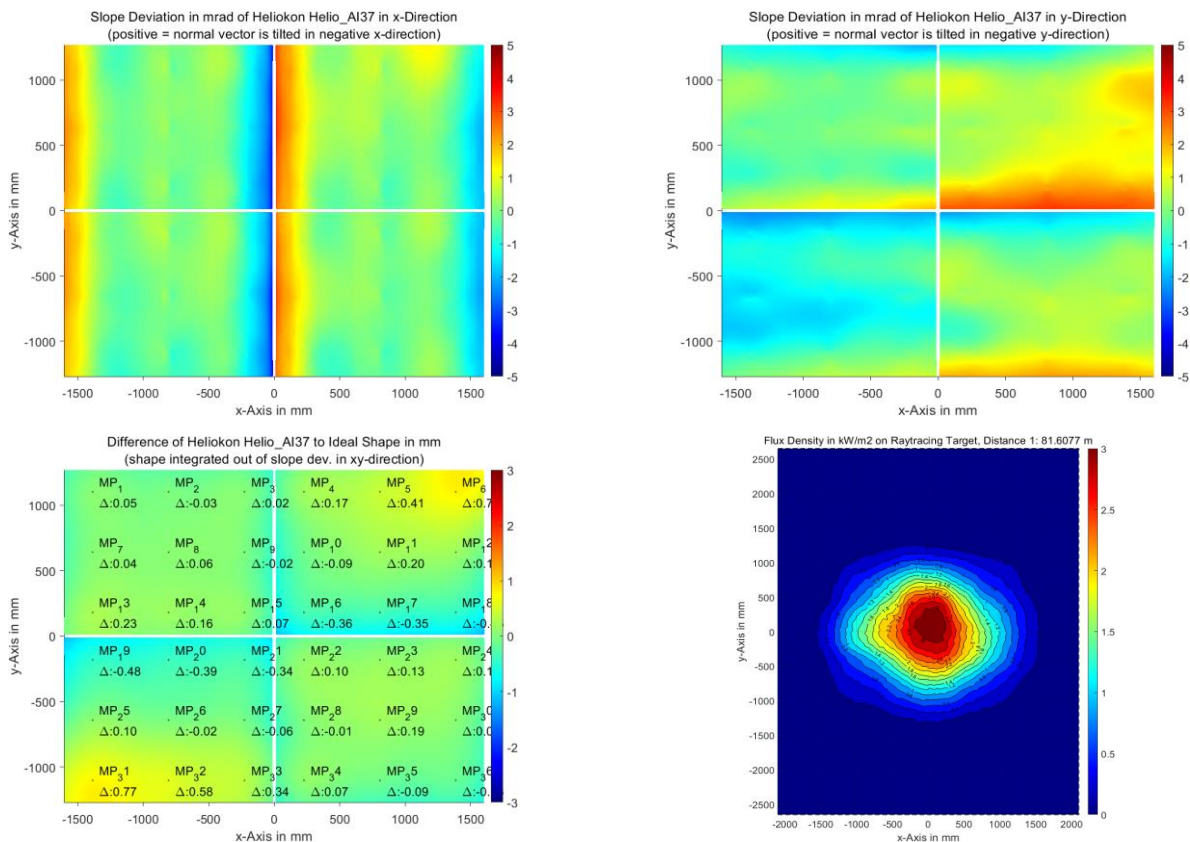
| | | | |
|---------------------|--------------------|--------------------|-----------------------|
| Panel: | Helio_AI37 | Meas. Date: | 03.03.2022 - 19:42:13 |
| Paneltype: | Heliostat | Operator: | CSP-Services |
| Setup: | MeasPosition | Comment: | |
| Negl. Rim: | 0 mm | System: | QDec_2014-101 |
| Orientation: | Mean Slope to Zero | Location: | Jülich |

Result Overview

Quality: no specifications Evaluated Surface: 100.0 %

| Value | Measurement | Specification | Description |
|---------|-------------|---------------|--------------------------------------|
| SDx | 0.97 mrad | | Slope deviation in x-direction (rms) |
| SDy | 1.01 mrad | | Slope deviation in y-direction (rms) |
| ICAP_D1 | 99.13 % | | Intercept on aperture |

Result Graphs



Measurement System Information

| | | | |
|--------------------------|--|----------------------|-----------------------|
| Config File: | 130929_Helio | QDec Version: | 1.0.5207 (06.10.2021) |
| Evaluation Date: | 07.03.2022 - 13:32:51 | | |
| Last Calibration: | 14.08.2014 | | |
| PDF Filename: | ...\MeasData_220303\Results\Helio\Helio_AI37\Helio_AI37_Rim0_Result_220307133251.pdf | | |