

# QDec Measurement Summary

## Measurement Information

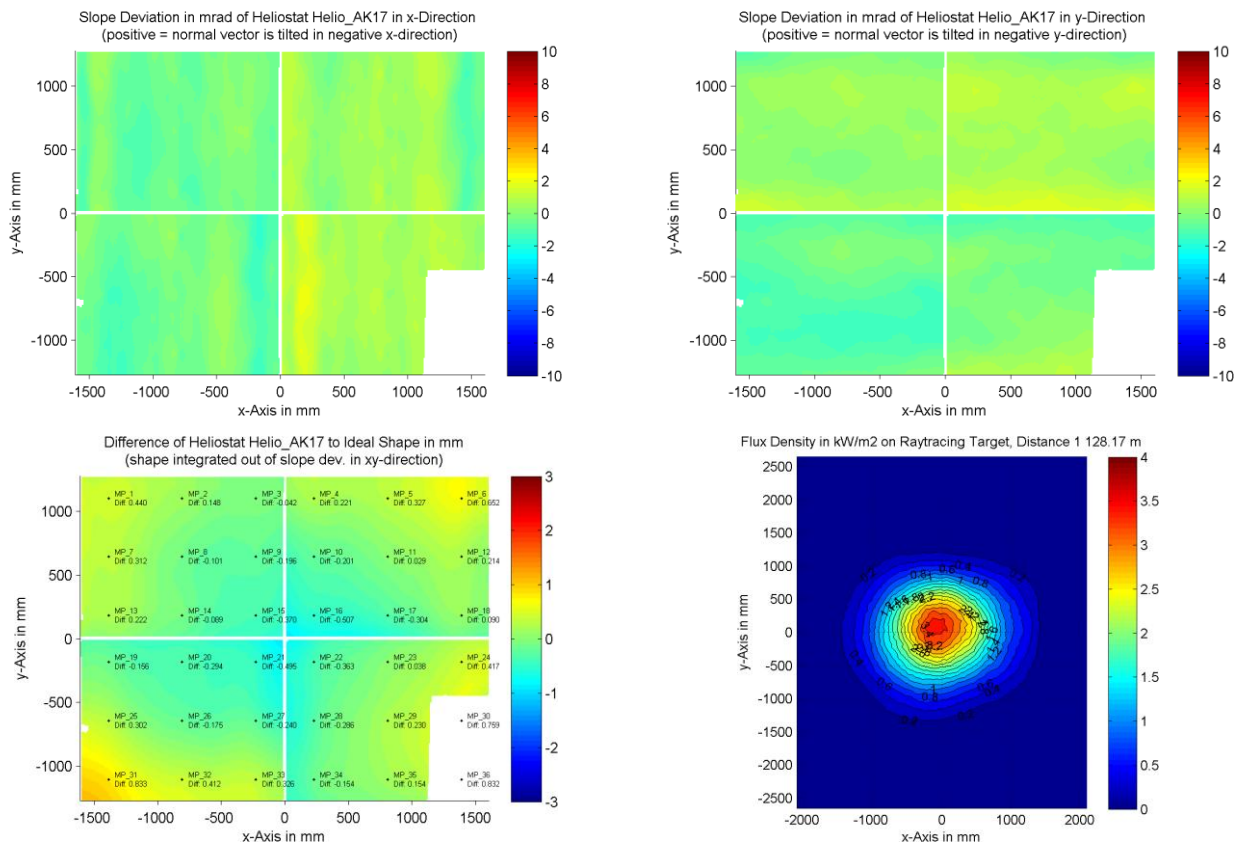
<b>Panel:</b>	Helio_AK17	<b>Meas. Date:</b>	11.05.2016 - 01:45:08
<b>Paneltype:</b>	Heliostat	<b>Operator:</b>	DLR Expert User
<b>Setup:</b>	MeasPosition	<b>Comment:</b>	
<b>Negl. Rim:</b>	0 mm	<b>System:</b>	QDec_2014-101
<b>Orientation:</b>	Mean Slope to Zero	<b>Location:</b>	Jülich

## Result Overview

**Quality:** no specifications      Evaluated Surface: 95.3 %

Value	Measurement	Specification	Description
SDx	0.69 mrad		Slope deviation in x-direction (rms)
SDy	0.72 mrad		Slope deviation in y-direction (rms)
ICAP_D1	98.51 %		Intercept on aperture

## Result Graphs



## Measurement System Information

<b>Config File:</b>	130929_Helio	<b>QDec Version:</b>	3.1.3680 (14.05.2014)
<b>Evaluation Date:</b>	12.05.2016 - 12:14:26		
<b>Last Calibration:</b>	14.08.2014		
<b>PDF Filename:</b>	...\MeasData_160510\Results\Helio\Helio_AK17\Helio_AK17_Rim0_Result_160512121426.pdf		