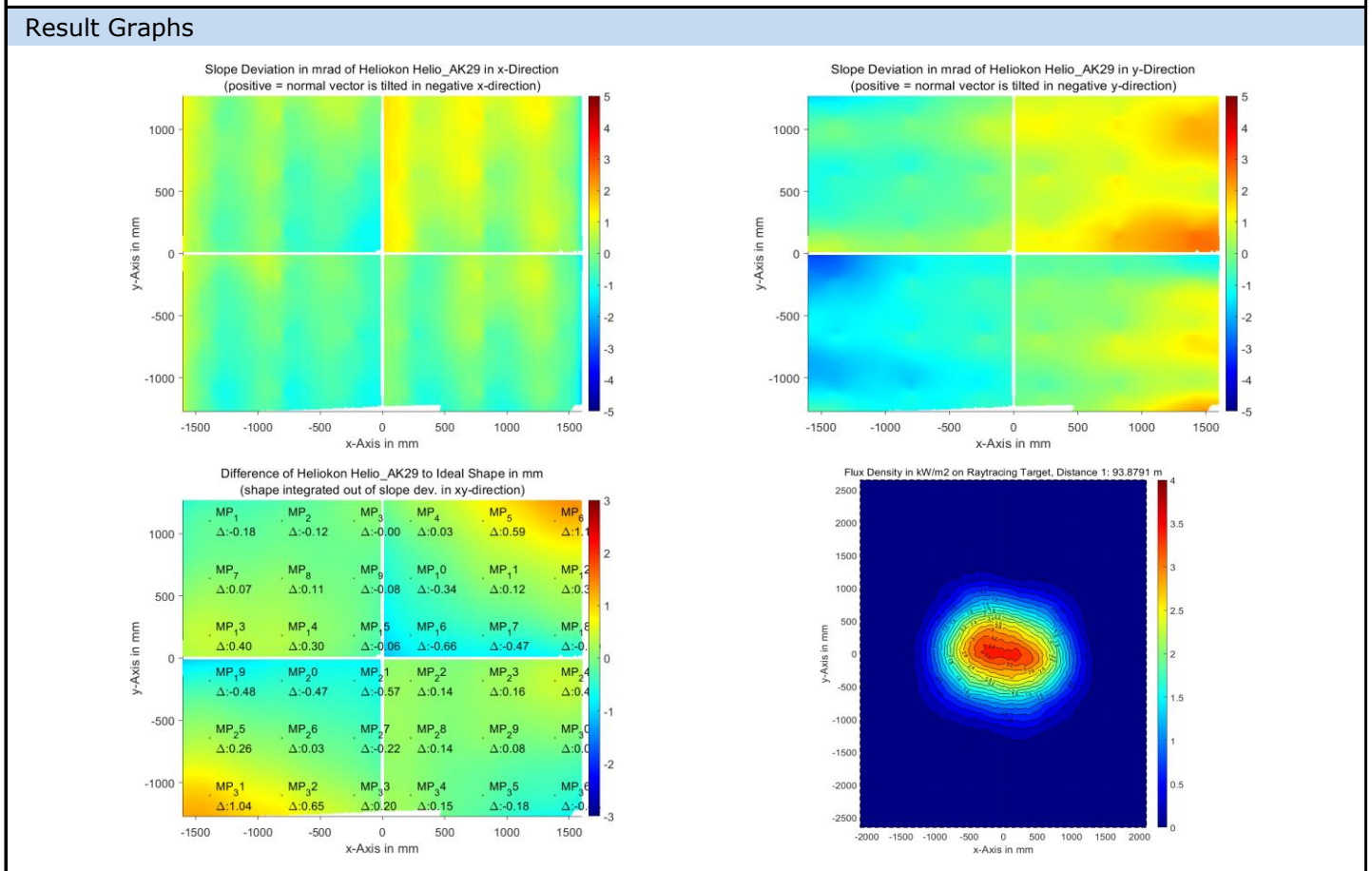


QDec Measurement Summary

Measurement Information			
Panel:	Helio_AK29	Meas. Date:	09.09.2021 - 23:28:59
Paneltype:	Heliostat	Operator:	DLR
Setup:	MeasPosition	Comment:	
Negl. Rim:	0 mm	System:	QDec_2014-101
Orientation:	Mean Slope to Zero	Location:	Jülich

Result Overview			
Quality:	no specifications	Evaluated Surface: 99.4 %	
Value	Measurement	Specification	Description
SDx	0.57 mrad		Slope deviation in x-direction (rms)
SDy	1.03 mrad		Slope deviation in y-direction (rms)
ICAP_D1	98.97 %		Intercept on aperture



Measurement System Information	
Config File:	130929_Helio QDec Version: 1.0.5207 (06.10.2021)
Evaluation Date:	13.10.2021 - 13:12:13
Last Calibration:	14.08.2014
PDF Filename:	...\MeasData_210909\Results\Helio\Helio_AK29\Helio_AK29_Rim0_Result_211013131213.pdf