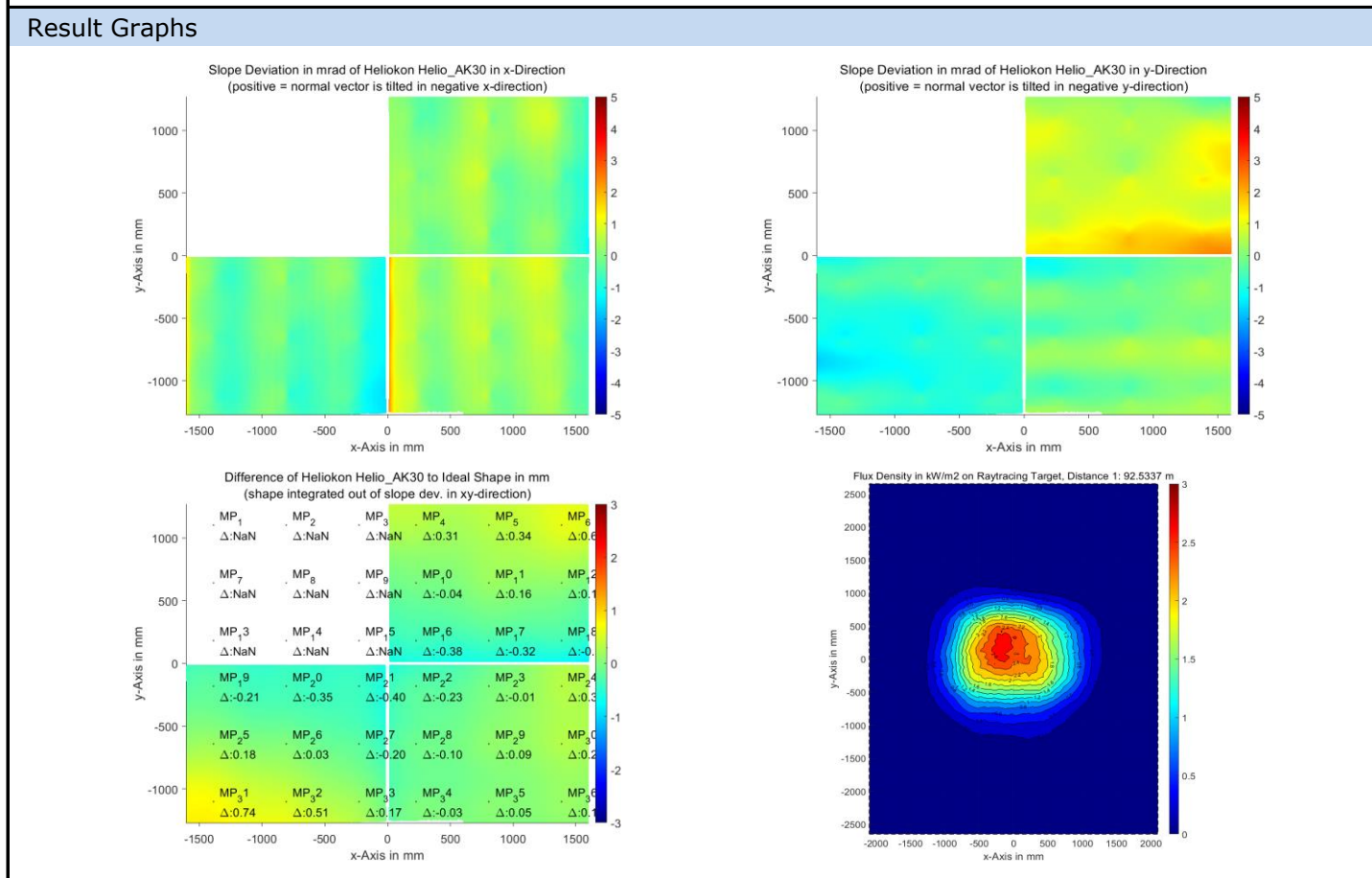


QDec Measurement Summary

Measurement Information			
Panel:	Helio_AK30	Meas. Date:	09.09.2021 - 23:27:07
Paneltype:	Heliostat	Operator:	DLR
Setup:	MeasPosition	Comment:	
Negl. Rim:	0 mm	System:	QDec_2014-101
Orientation:	Mean Slope to Zero	Location:	Jülich

Result Overview			
Quality:	no specifications	Evaluated Surface: 74.8 %	
Value	Measurement	Specification	Description
SDx	0.49 mrad		Slope deviation in x-direction (rms)
SDy	0.78 mrad		Slope deviation in y-direction (rms)
ICAP_D1	99.00 %		Intercept on aperture



Measurement System Information		
Config File:	130929_Helio	QDec Version: 1.0.5207 (06.10.2021)
Evaluation Date:	13.10.2021 - 13:13:51	
Last Calibration:	14.08.2014	
PDF Filename:	...\MeasData_210909\Results\Helio\Helio_AK30\Helio_AK30_Rim0_Result_211013131351.pdf	