

# QDec Measurement Summary

## Measurement Information

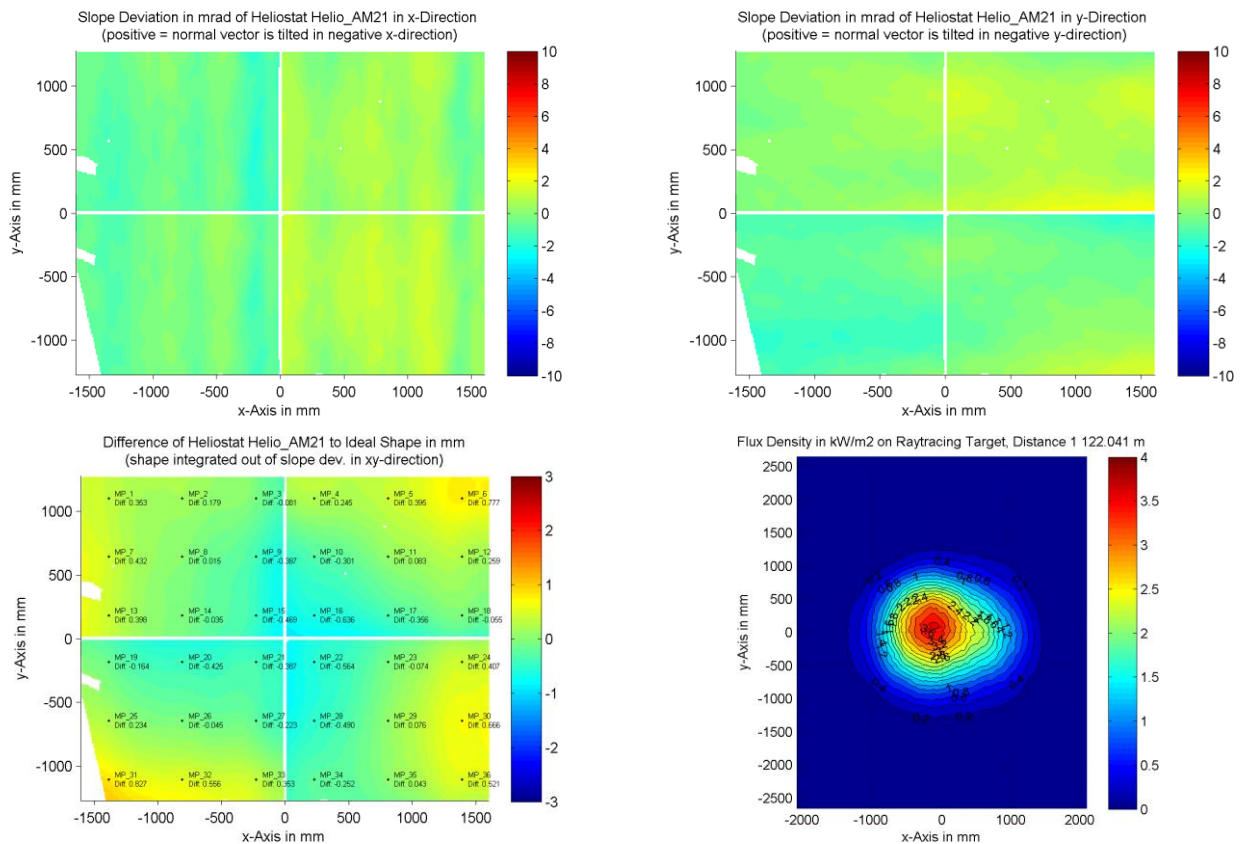
|                     |                    |                    |                       |
|---------------------|--------------------|--------------------|-----------------------|
| <b>Panel:</b>       | Helio_AM21         | <b>Meas. Date:</b> | 11.05.2016 - 02:12:44 |
| <b>Paneltype:</b>   | Heliostat          | <b>Operator:</b>   | DLR Expert User       |
| <b>Setup:</b>       | MeasPosition       | <b>Comment:</b>    |                       |
| <b>Negl. Rim:</b>   | 0 mm               | <b>System:</b>     | QDec_2014-101         |
| <b>Orientation:</b> | Mean Slope to Zero | <b>Location:</b>   | Jülich                |

## Result Overview

**Quality:** no specifications      Evaluated Surface: 98.7 %

| Value   | Measurement | Specification | Description                          |
|---------|-------------|---------------|--------------------------------------|
| SDx     | 0.75 mrad   |               | Slope deviation in x-direction (rms) |
| SDy     | 0.80 mrad   |               | Slope deviation in y-direction (rms) |
| ICAP_D1 | 98.59 %     |               | Intercept on aperture                |

## Result Graphs



## Measurement System Information

|                          |  |                      |                       |
|--------------------------|--|----------------------|-----------------------|
| <b>Config File:</b>      | 130929_Helio   | <b>QDec Version:</b> | 3.1.3680 (14.05.2014) |
| <b>Evaluation Date:</b>  | 12.05.2016 - 13:44:27  |                      |                       |
| <b>Last Calibration:</b> | 14.08.2014   |                      |                       |
| <b>PDF Filename:</b>     | ...\MeasData_160510\Results\Helio\Helio_AM21\Helio_AM21_Rim0_Result_160512134427.pdf |                      |                       |