

QDec Measurement Summary

Measurement Information

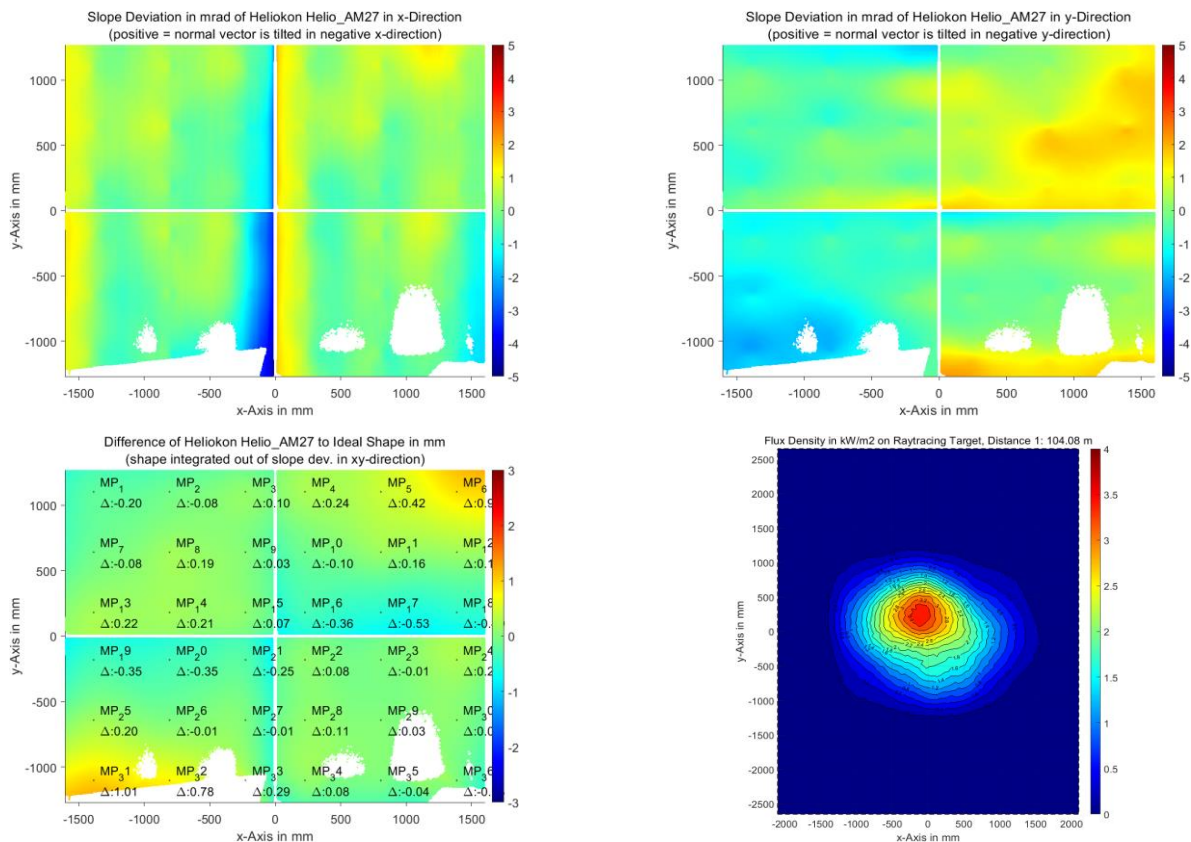
Panel:	Helio_AM27	Meas. Date:	08.09.2021 - 22:47:49
Paneltype:	Heliostat	Operator:	DLR
Setup:	MeasPosition	Comment:	
Negl. Rim:	0 mm	System:	QDec_2014-101
Orientation:	Mean Slope to Zero	Location:	Jülich

Result Overview

Quality: no specifications Evaluated Surface: 93.7 %

Value	Measurement	Specification	Description
SDx	0.78 mrad		Slope deviation in x-direction (rms)
SDy	0.93 mrad		Slope deviation in y-direction (rms)
ICAP_D1	98.85 %		Intercept on aperture

Result Graphs



Measurement System Information

Config File:	130929_Helio	QDec Version:	1.0.5207 (06.10.2021)
Evaluation Date:	13.10.2021 - 08:35:11		
Last Calibration:	14.08.2014		
PDF Filename:	...\MeasData_210908\Results\Helio\Helio_AM27\Helio_AM27_Rim0_Result_211013083511.pdf		