

QDec Measurement Summary

Measurement Information

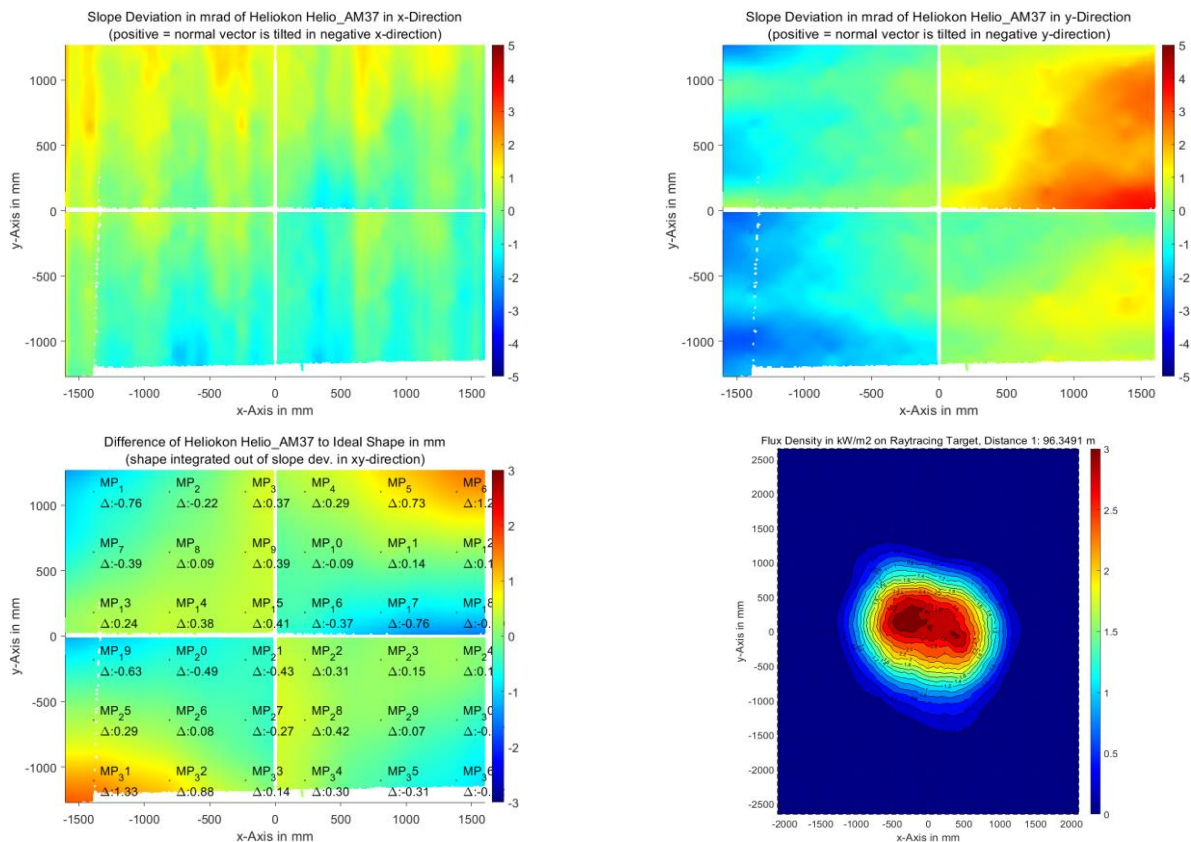
Panel:	Helio_AM37	Meas. Date:	09.09.2021 - 22:03:10
Paneltype:	Heliostat	Operator:	DLR
Setup:	MeasPosition	Comment:	
Negl. Rim:	0 mm	System:	QDec_2014-101
Orientation:	Mean Slope to Zero	Location:	Jülich

Result Overview

Quality: no specifications Evaluated Surface: 96.2 %

Value	Measurement	Specification	Description
SDx	0.70 mrad		Slope deviation in x-direction (rms)
SDy	1.30 mrad		Slope deviation in y-direction (rms)
ICAP_D1	98.93 %		Intercept on aperture

Result Graphs



Measurement System Information

Config File:	130929_Helio	QDec Version:	1.0.5207 (06.10.2021)
Evaluation Date:	13.10.2021 - 13:29:55		
Last Calibration:	14.08.2014		
PDF Filename:	...\MeasData_210909\Results\Helio\Helio_AM37\Helio_AM37_Rim0_Result_211013132955.pdf		