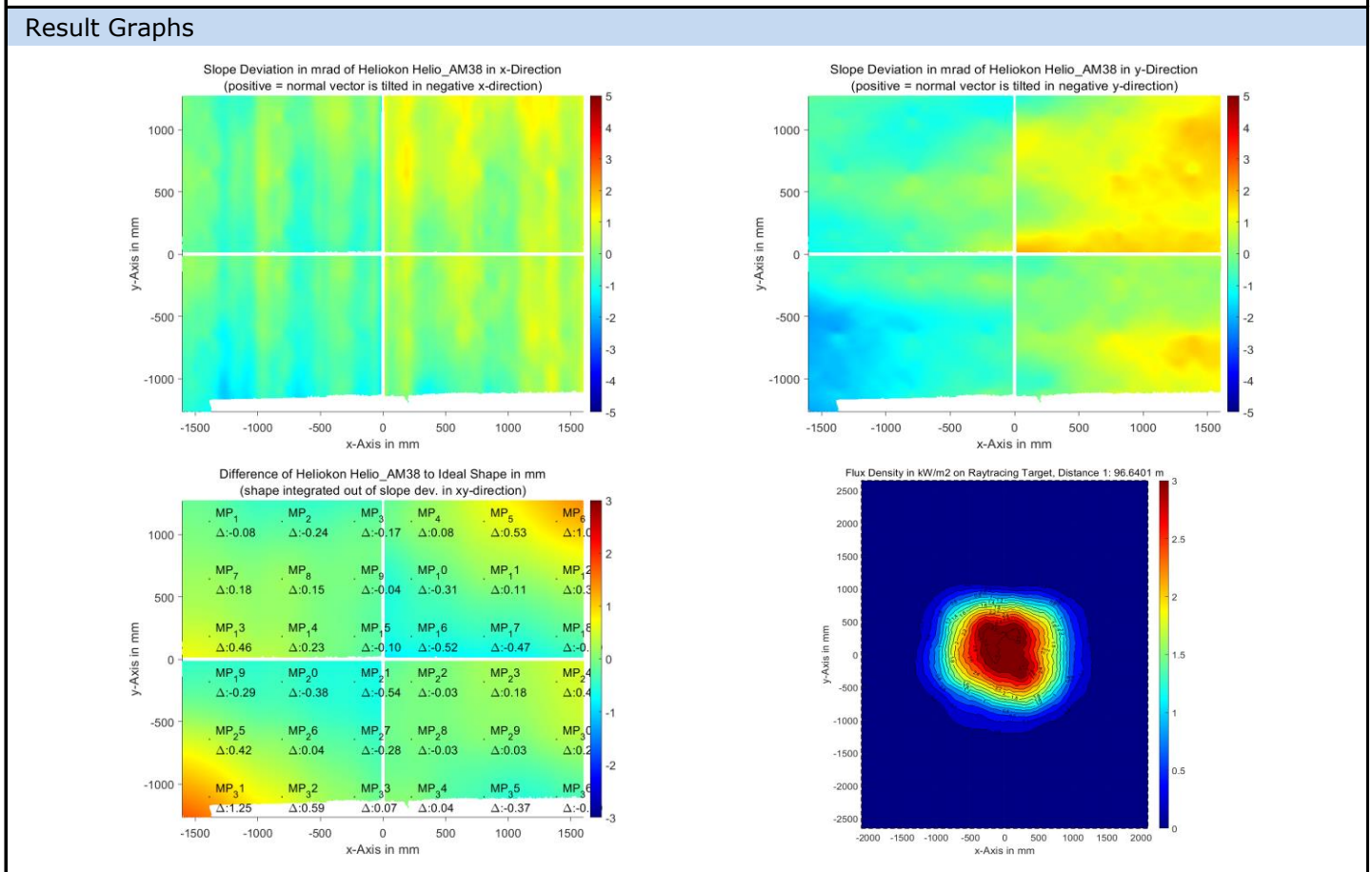


QDec Measurement Summary

Measurement Information			
Panel:	Helio_AM38	Meas. Date:	09.09.2021 - 22:04:00
Paneltype:	Heliostat	Operator:	DLR
Setup:	MeasPosition	Comment:	
Negl. Rim:	0 mm	System:	QDec_2014-101
Orientation:	Mean Slope to Zero	Location:	Jülich

Result Overview			
Quality:	no specifications	Evaluated Surface: 94.8 %	
Value	Measurement	Specification	Description
SDx	0.58 mrad		Slope deviation in x-direction (rms)
SDy	0.94 mrad		Slope deviation in y-direction (rms)
ICAP_D1	98.89 %		Intercept on aperture



Measurement System Information			
Config File:	130929_Helio	QDec Version:	1.0.5207 (06.10.2021)
Evaluation Date:	13.10.2021 - 13:31:00		
Last Calibration:	14.08.2014		
PDF Filename:	...\MeasData_210909\Results\Helio\Helio_AM38\Helio_AM38_Rim0_Result_211013133100.pdf		