

# QDec Measurement Summary

## Measurement Information

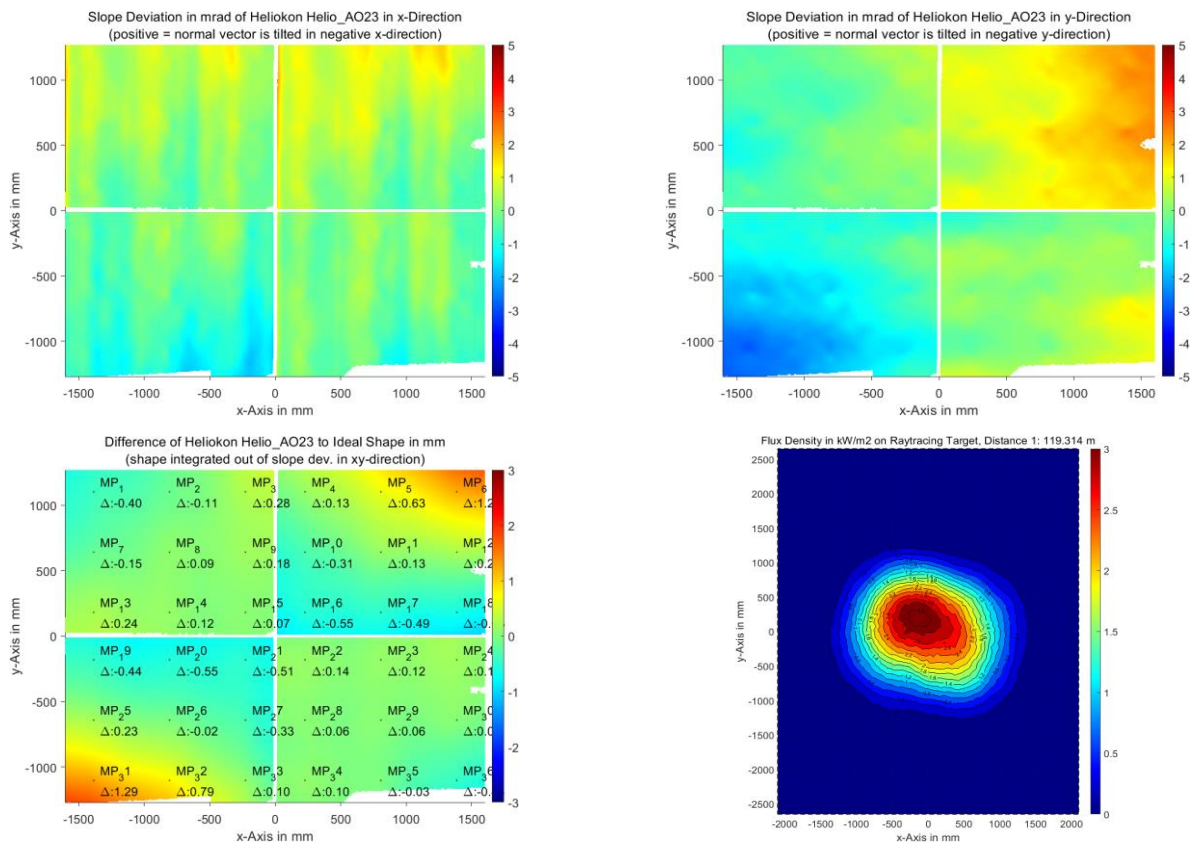
<b>Panel:</b>	Helio_AO23	<b>Meas. Date:</b>	08.09.2021 - 22:51:03
<b>Paneltype:</b>	Heliostat	<b>Operator:</b>	DLR
<b>Setup:</b>	MeasPosition	<b>Comment:</b>	
<b>Negl. Rim:</b>	0 mm	<b>System:</b>	QDec_2014-101
<b>Orientation:</b>	Mean Slope to Zero	<b>Location:</b>	Jülich

## Result Overview

**Quality:** no specifications Evaluated Surface: 98.3 %

Value	Measurement	Specification	Description
SDx	0.59 mrad		Slope deviation in x-direction (rms)
SDy	1.09 mrad		Slope deviation in y-direction (rms)
ICAP_D1	98.61 %		Intercept on aperture

## Result Graphs



## Measurement System Information

<b>Config File:</b>	130929_Helio	<b>QDec Version:</b>	1.0.5207 (06.10.2021)
<b>Evaluation Date:</b>	12.10.2021 - 16:36:01		
<b>Last Calibration:</b>	14.08.2014		
<b>PDF Filename:</b>	...\MeasData_210908\Results\Helio\Helio_AO23\Helio_AO23_Rim0_Result_211012163601.pdf		