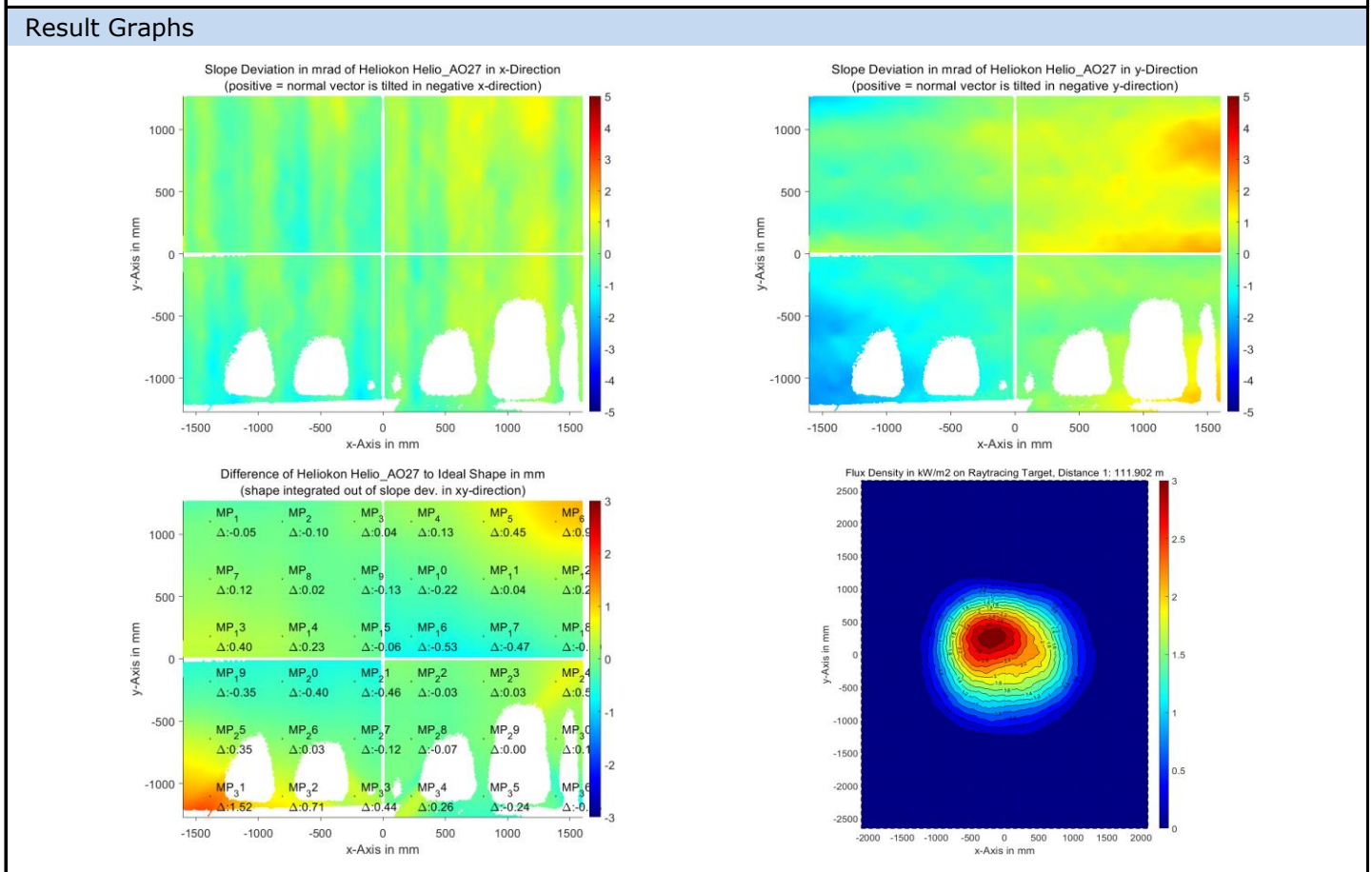


QDec Measurement Summary

Measurement Information			
Panel:	Helio_AO27	Meas. Date:	08.09.2021 - 22:53:28
Paneltype:	Heliostat	Operator:	DLR
Setup:	MeasPosition	Comment:	
Negl. Rim:	0 mm	System:	QDec_2014-101
Orientation:	Mean Slope to Zero	Location:	Jülich

Result Overview			
Quality:	no specifications	Evaluated Surface: 86.2 %	
Value	Measurement	Specification	Description
SDx	0.47 mrad		Slope deviation in x-direction (rms)
SDy	0.89 mrad		Slope deviation in y-direction (rms)
ICAP_D1	98.72 %		Intercept on aperture



Measurement System Information			
Config File:	130929_Helio	QDec Version:	1.0.5207 (06.10.2021)
Evaluation Date:	12.10.2021 - 16:37:52		
Last Calibration:	14.08.2014		
PDF Filename:	...\MeasData_210908\Results\Helio\Helio_AO27\Helio_AO27_Rim0_Result_211012163752.pdf		