

QDec Measurement Summary

Measurement Information

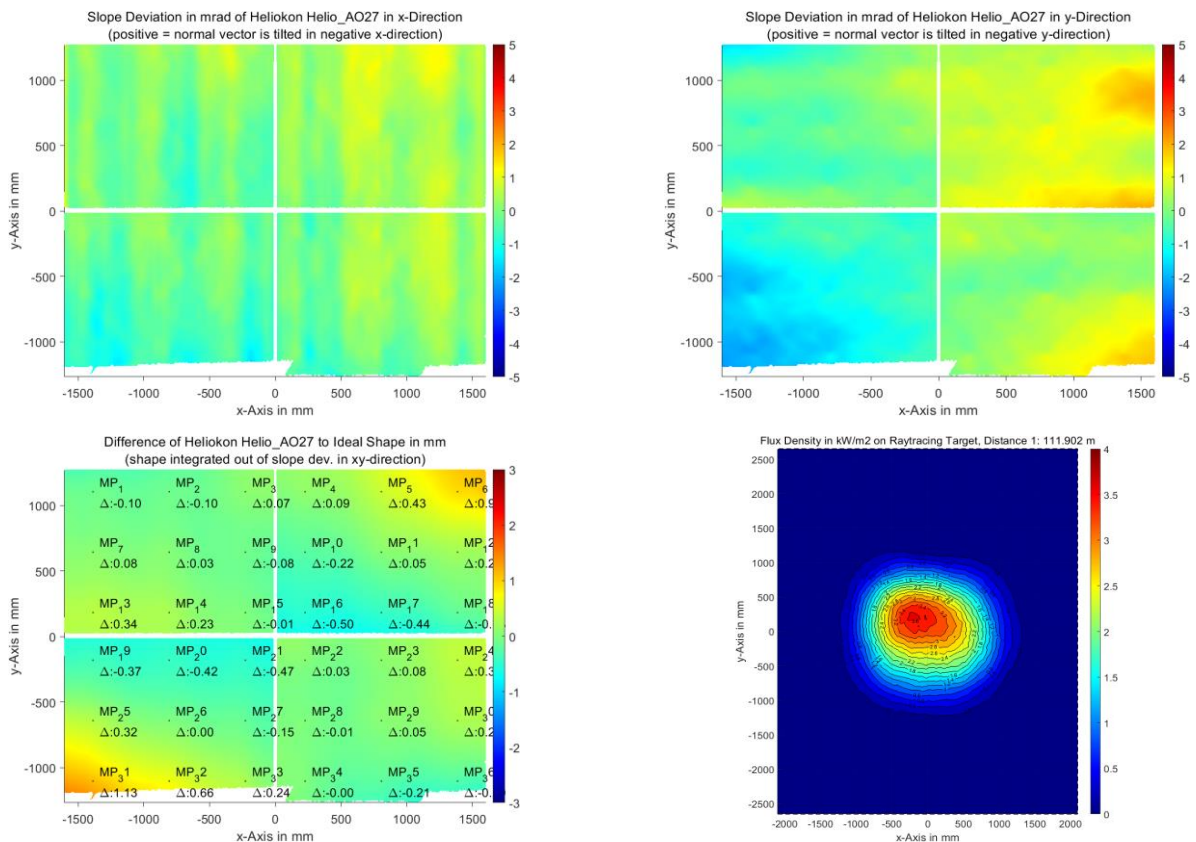
Panel:	Helio_AO27	Meas. Date:	09.09.2021 - 22:13:26
Paneltype:	Heliostat	Operator:	DLR
Setup:	MeasPosition	Comment:	
Negl. Rim:	0 mm	System:	QDec_2014-101
Orientation:	Mean Slope to Zero	Location:	Jülich

Result Overview

Quality: no specifications Evaluated Surface: 96.6 %

Value	Measurement	Specification	Description
SDx	0.45 mrad		Slope deviation in x-direction (rms)
SDy	0.87 mrad		Slope deviation in y-direction (rms)
ICAP_D1	98.71 %		Intercept on aperture

Result Graphs



Measurement System Information

Config File:	130929_Helio	QDec Version:	1.0.5207 (06.10.2021)
Evaluation Date:	13.10.2021 - 13:38:49		
Last Calibration:	14.08.2014		
PDF Filename:	...\MeasData_210909\Results\Helio\Helio_AO27\Helio_AO27_Rim0_Result_211013133849.pdf		