

QDec Measurement Summary

Measurement Information

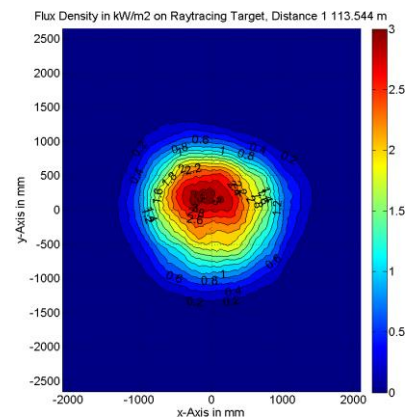
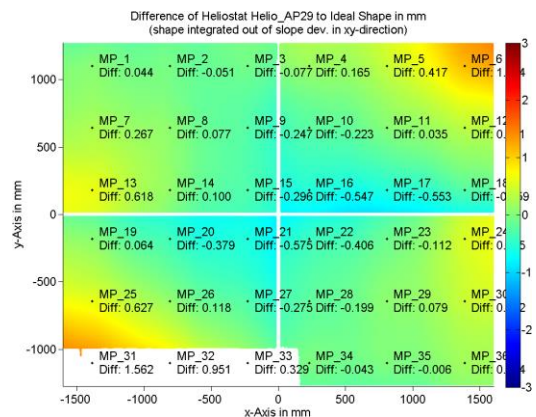
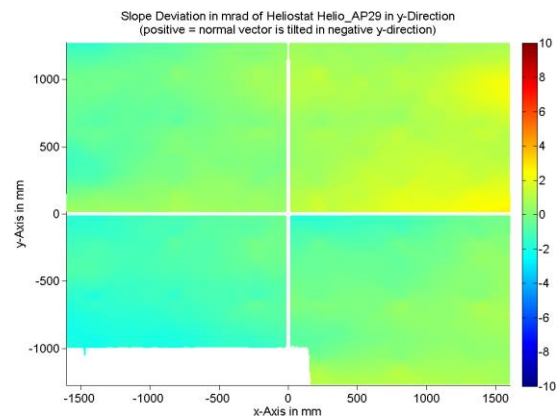
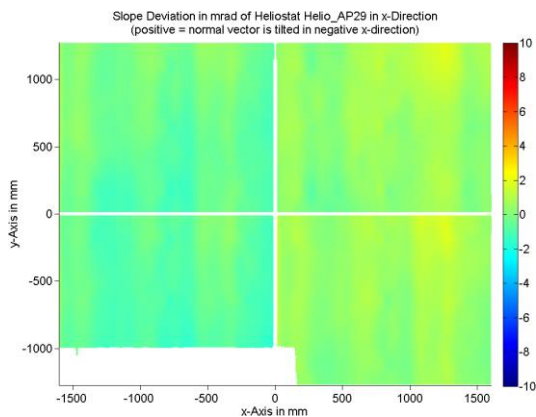
Panel:	Helio_AP29	Meas. Date:	07.08.2018 - 22:15:59
Paneltype:	Heliostat	Operator:	CSP-Services
Setup:	MeasPosition	Comment:	
Negl. Rim:	0 mm	System:	QDec_2014-101
Orientation:	Mean Slope to Zero	Location:	Jülich

Result Overview

Quality: no specifications Evaluated Surface: 94.0 %

Value	Measurement	Specification	Description
SDx	0.67 mrad		Slope deviation in x-direction (rms)
SDy	0.95 mrad		Slope deviation in y-direction (rms)
ICAP_D1	98.71 %		Intercept on aperture

Result Graphs



Measurement System Information

Config File:	130929_Helio	QDec Version:	3.1.4555 (13.03.2017)
Evaluation Date:	10.08.2018 - 11:37:52		
Last Calibration:	14.08.2014		
PDF Filename:	...\MeasData_180807\Results\Helio\Helio_AP29\Helio_AP29_Rim0_Result_180810113752.pdf		