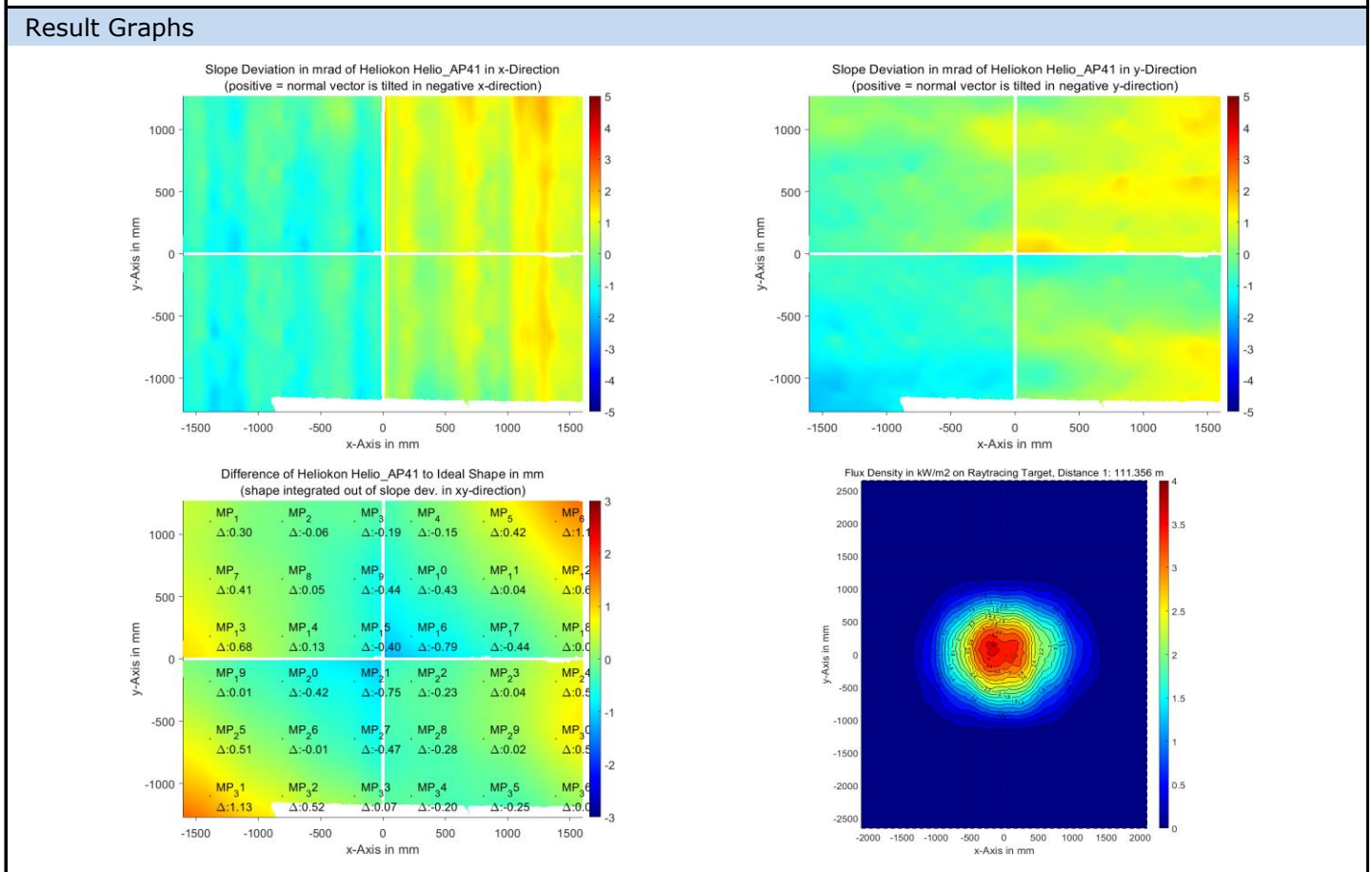


QDec Measurement Summary

Measurement Information			
Panel:	Helio_AP41	Meas. Date:	09.07.2024 - 00:31:55
Paneltype:	Heliostat	Operator:	DLR
Setup:	MeasPosition	Comment:	
Negl. Rim:	0 mm	System:	QDec_2014-101
Orientation:	Mean Slope to Zero	Location:	Jylich

Result Overview			
Quality:	no specifications	Evaluated Surface: 97.0 %	
Value	Measurement	Specification	Description
SDx	0.87 mrad		Slope deviation in x-direction (rms)
SDy	0.81 mrad		Slope deviation in y-direction (rms)
ICAP_D1	98.73 %		Intercept on aperture



Measurement System Information	
Config File:	130929_Helio
Evaluation Date:	11.07.2024 - 09:23:14
Last Calibration:	14.08.2014
PDF Filename:	...\MeasData_240709\Results\Helio\Helio_AP41\Helio_AP41_Rim0_Result_240711092314.pdf
QDec Version:	1.0.5229 (23.02.2022)