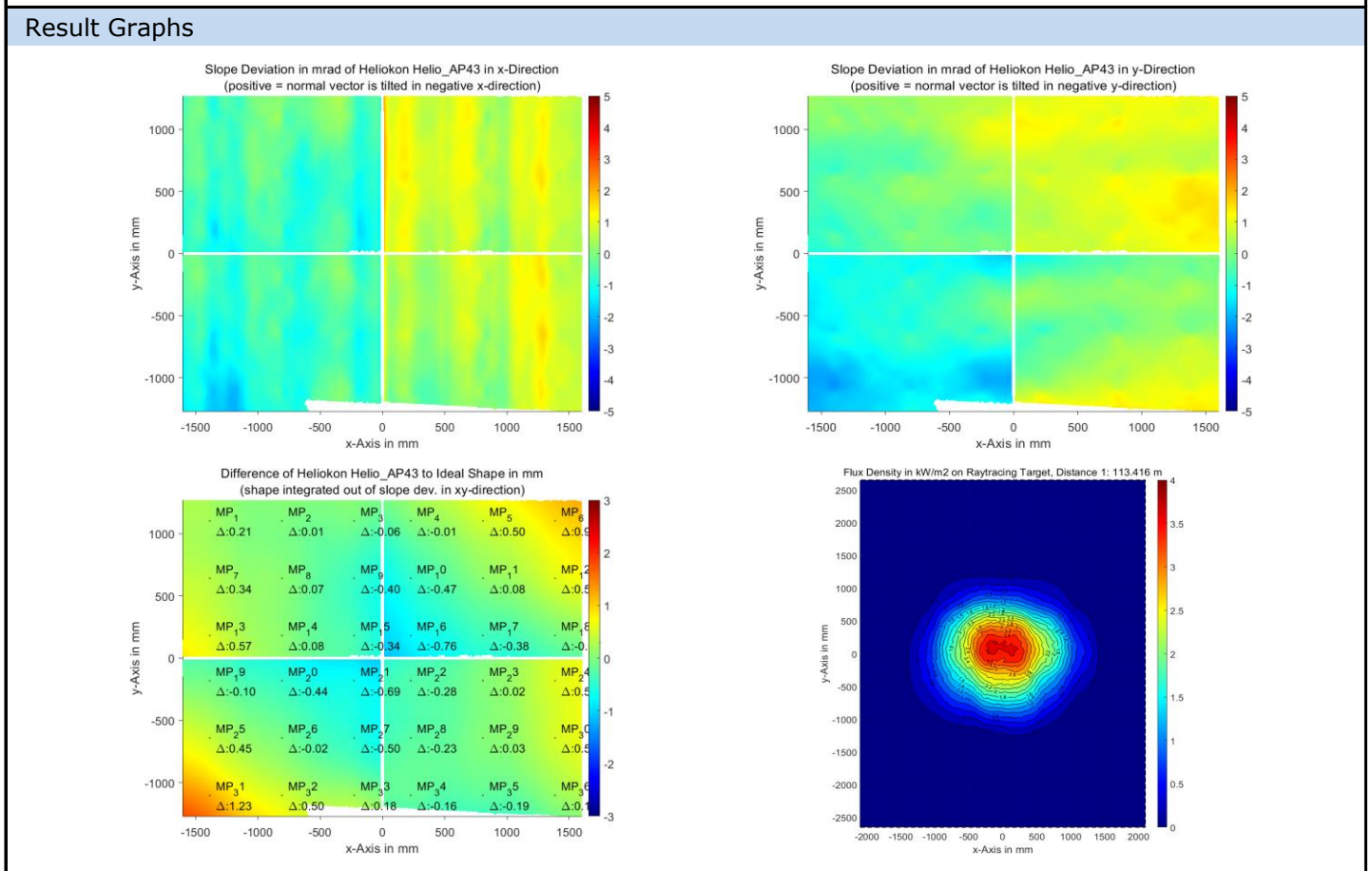


QDec Measurement Summary

Measurement Information			
Panel:	Helio_AP43	Meas. Date:	09.07.2024 - 00:32:47
Paneltype:	Heliostat	Operator:	DLR
Setup:	MeasPosition	Comment:	
Negl. Rim:	0 mm	System:	QDec_2014-101
Orientation:	Mean Slope to Zero	Location:	Jylich

Result Overview			
Quality:	no specifications	Evaluated Surface: 98.7 %	
Value	Measurement	Specification	Description
SDx	0.78 mrad		Slope deviation in x-direction (rms)
SDy	0.87 mrad		Slope deviation in y-direction (rms)
ICAP_D1	98.67 %		Intercept on aperture



Measurement System Information			
Config File:	130929_Helio	QDec Version:	1.0.5229 (23.02.2022)
Evaluation Date:	11.07.2024 - 09:24:06		
Last Calibration:	14.08.2014		
PDF Filename:	...\MeasData_240709\Results\Helio\Helio_AP43\Helio_AP43_Rim0_Result_240711092406.pdf		