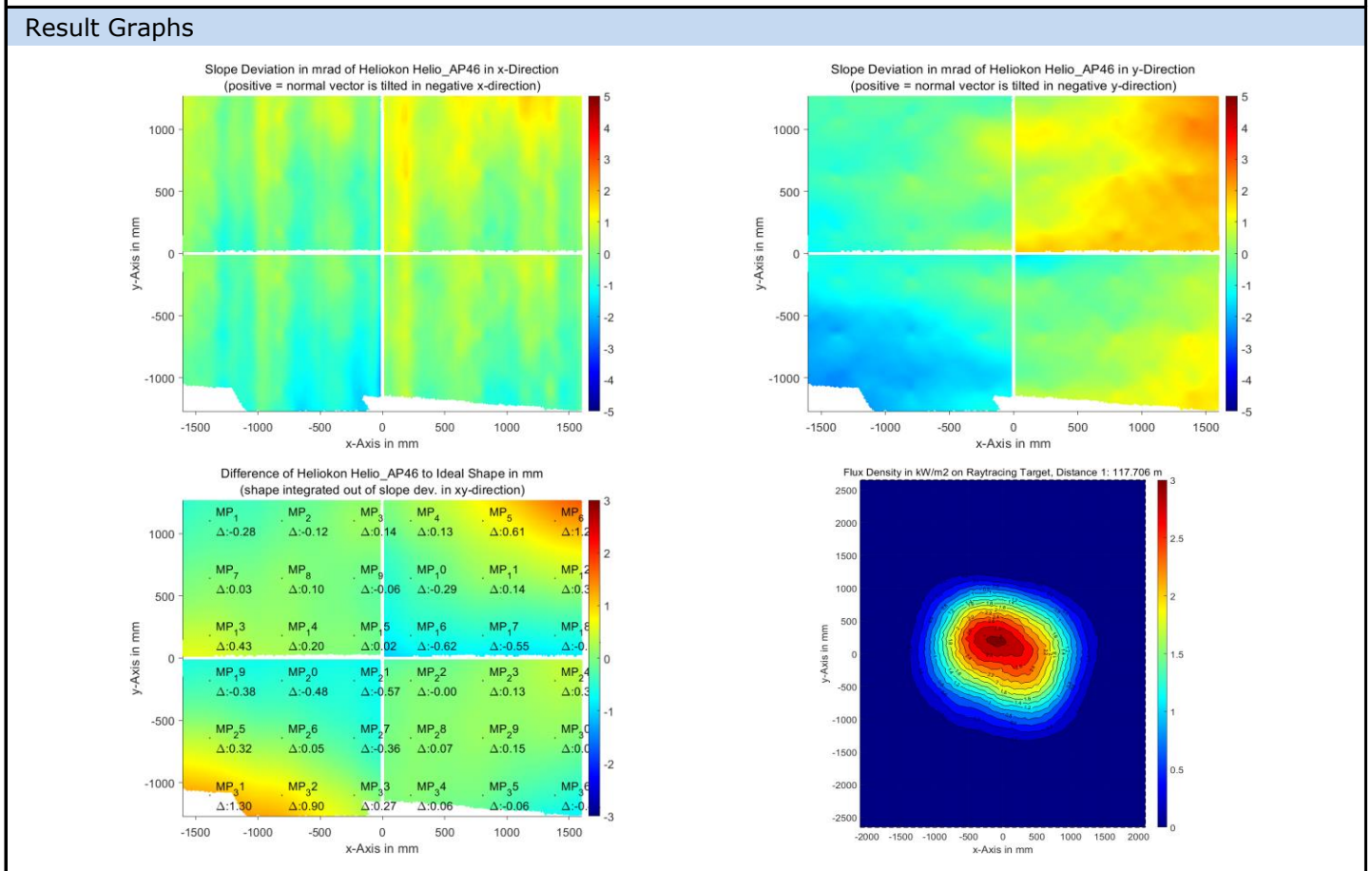


QDec Measurement Summary

Measurement Information			
Panel:	Helio_AP46	Meas. Date:	09.07.2024 - 00:34:31
Paneltype:	Heliostat	Operator:	DLR
Setup:	MeasPosition	Comment:	
Negl. Rim:	0 mm	System:	QDec_2014-101
Orientation:	Mean Slope to Zero	Location:	Jylich

Result Overview			
Quality:	no specifications	Evaluated Surface: 97.2 %	
Value	Measurement	Specification	Description
SDx	0.58 mrad		Slope deviation in x-direction (rms)
SDy	1.11 mrad		Slope deviation in y-direction (rms)
ICAP_D1	98.67 %		Intercept on aperture



Measurement System Information			
Config File:	130929_Helio	QDec Version:	1.0.5229 (23.02.2022)
Evaluation Date:	11.07.2024 - 09:30:11		
Last Calibration:	14.08.2014		
PDF Filename:	...\MeasData_240709\Results\Helio\Helio_AP46\Helio_AP46_Rim0_Result_240711093011.pdf		