

# QDec Measurement Summary

## Measurement Information

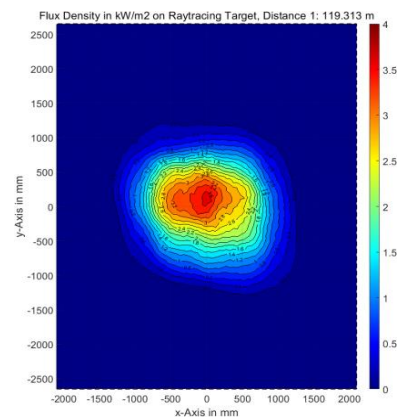
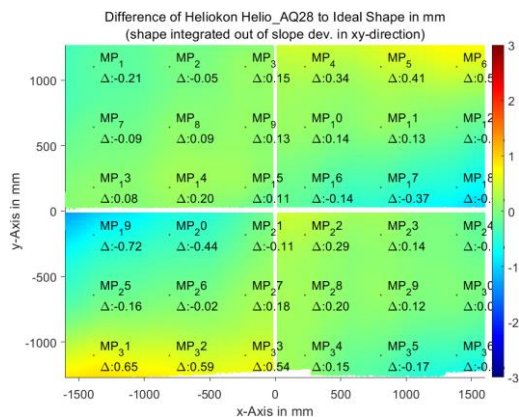
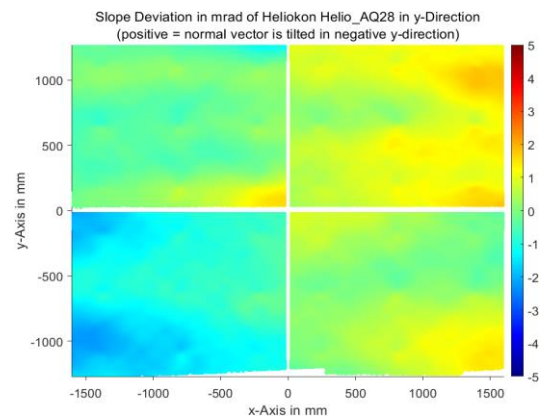
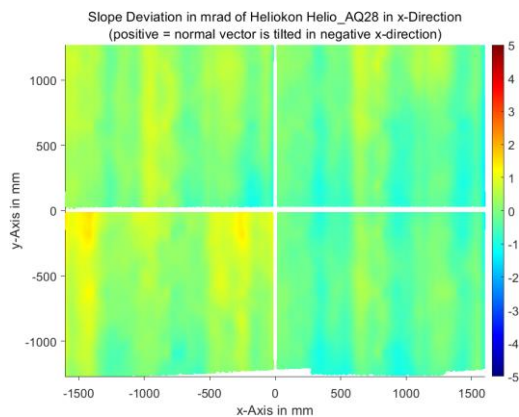
<b>Panel:</b>	Helio_AQ28	<b>Meas. Date:</b>	09.09.2021 - 22:46:53
<b>Paneltype:</b>	Heliostat	<b>Operator:</b>	DLR
<b>Setup:</b>	MeasPosition	<b>Comment:</b>	
<b>Negl. Rim:</b>	0 mm	<b>System:</b>	QDec_2014-101
<b>Orientation:</b>	Mean Slope to Zero	<b>Location:</b>	Jülich

## Result Overview

**Quality:** no specifications Evaluated Surface: 98.7 %

Value	Measurement	Specification	Description
SDx	0.45 mrad		Slope deviation in x-direction (rms)
SDy	0.87 mrad		Slope deviation in y-direction (rms)
ICAP_D1	98.65 %		Intercept on aperture

## Result Graphs



## Measurement System Information

Config File:	130929_Helio	QDec Version:	1.0.5207 (06.10.2021)
Evaluation Date:	13.10.2021 - 14:18:52		
Last Calibration:	14.08.2014		
PDF Filename:	...\MeasData_210909\Results\Helio\Helio_AQ28\Helio_AQ28_Rim0_Result_211013141852.pdf		