

QDec Measurement Summary

Measurement Information

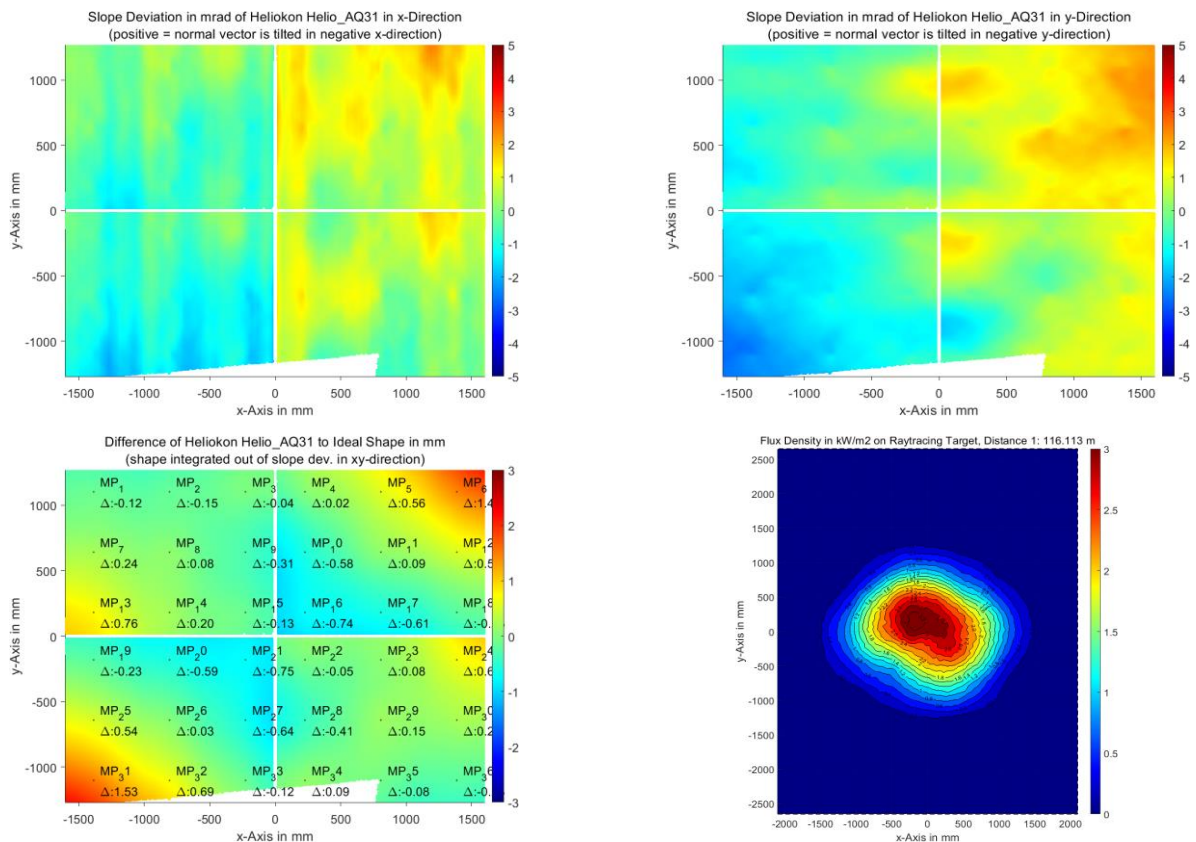
Panel:	Helio_AQ31	Meas. Date:	09.09.2021 - 22:44:25
Paneltype:	Heliostat	Operator:	DLR
Setup:	MeasPosition	Comment:	
Negl. Rim:	0 mm	System:	QDec_2014-101
Orientation:	Mean Slope to Zero	Location:	Jülich

Result Overview

Quality: no specifications Evaluated Surface: 97.9 %

Value	Measurement	Specification	Description
SDx	0.86 mrad		Slope deviation in x-direction (rms)
SDy	1.12 mrad		Slope deviation in y-direction (rms)
ICAP_D1	98.68 %		Intercept on aperture

Result Graphs



Measurement System Information

Config File:	130929_Helio	QDec Version:	1.0.5207 (06.10.2021)
Evaluation Date:	13.10.2021 - 14:20:29		
Last Calibration:	14.08.2014		
PDF Filename:	...\MeasData_210909\Results\Helio\Helio_AQ31\Helio_AQ31_Rim0_Result_211013142029.pdf		