

QDec Measurement Summary

Measurement Information

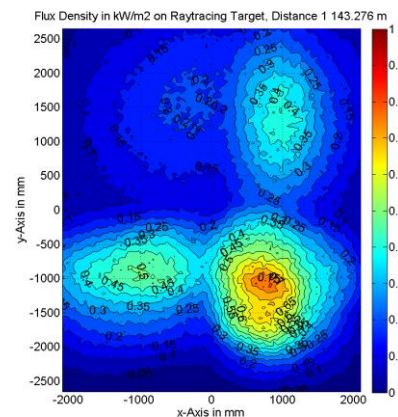
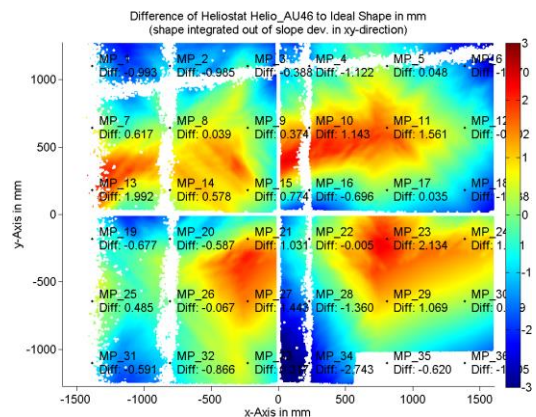
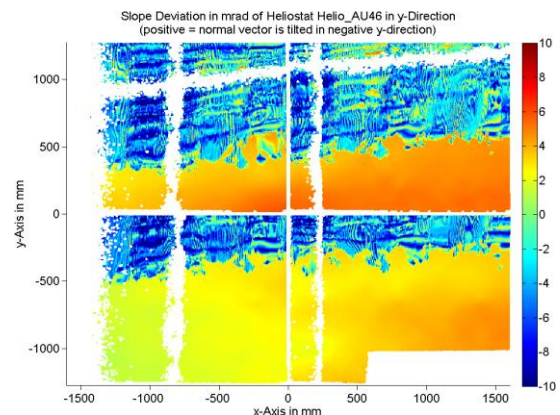
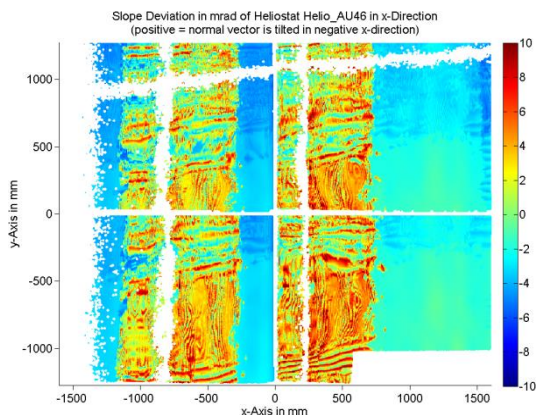
Panel:	Helio_AU46	Meas. Date:	07.08.2018 - 22:59:14
Paneltype:	Heliostat	Operator:	DLR
Setup:	MeasPosition	Comment:	
Negl. Rim:	0 mm	System:	QDec_2014-101
Orientation:	Mean Slope to Zero	Location:	Jülich

Result Overview

Quality: no specifications Evaluated Surface: 81.0 %

Value	Measurement	Specification	Description
SDx	3.48 mrad		Slope deviation in x-direction (rms)
SDy	4.28 mrad		Slope deviation in y-direction (rms)
ICAP_D1	85.12 %		Intercept on aperture

Result Graphs



Measurement System Information

Config File:	130929_Helio	QDec Version:	3.1.4555 (13.03.2017)
Evaluation Date:	07.08.2018 - 23:18:51		
Last Calibration:	14.08.2014		
PDF Filename:	...\MeasData_180807\Results\Helio\Helio_AU46\Helio_AU46_Rim0_Result_180807231851.pdf		