

QDec Measurement Summary

Measurement Information

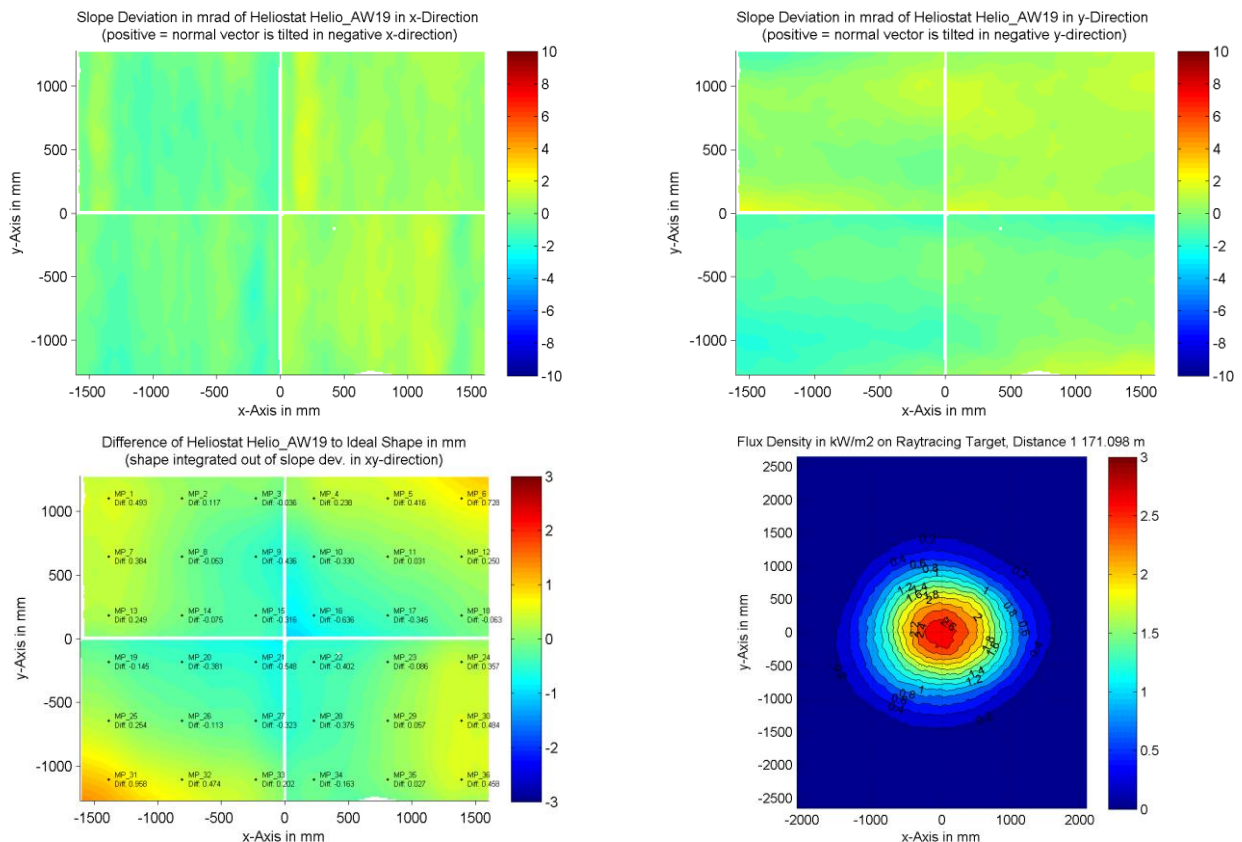
Panel:	Helio_AW19	Meas. Date:	11.05.2016 - 03:34:04
Paneltype:	Heliostat	Operator:	DLR Expert User
Setup:	MeasPosition	Comment:	
Negl. Rim:	0 mm	System:	QDec_2014-101
Orientation:	Mean Slope to Zero	Location:	Jülich

Result Overview

Quality: no specifications Evaluated Surface: 99.7 %

Value	Measurement	Specification	Description
SDx	0.65 mrad		Slope deviation in x-direction (rms)
SDy	0.80 mrad		Slope deviation in y-direction (rms)
ICAP_D1	98.12 %		Intercept on aperture

Result Graphs



Measurement System Information

Config File:	130929_Helio	QDec Version:	3.1.3680 (14.05.2014)
Evaluation Date:	12.05.2016 - 13:57:08		
Last Calibration:	14.08.2014		
PDF Filename:	...\MeasData_160510\Results\Helio\Helio_AW19\Helio_AW19_Rim0_Result_160512135708.pdf		