

QDec Measurement Summary

Measurement Information

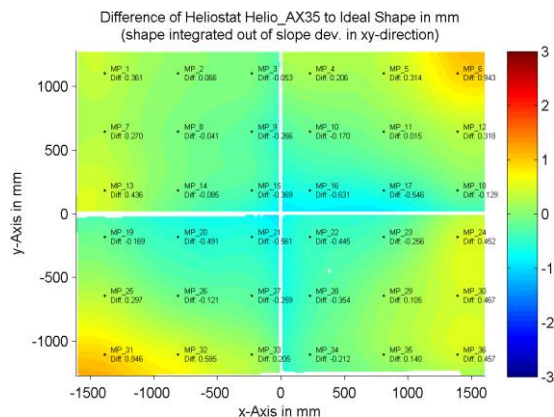
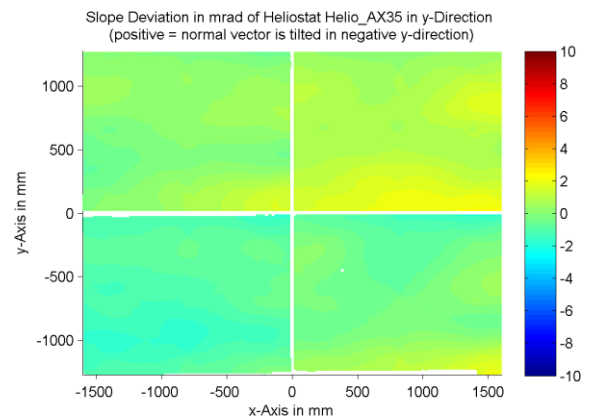
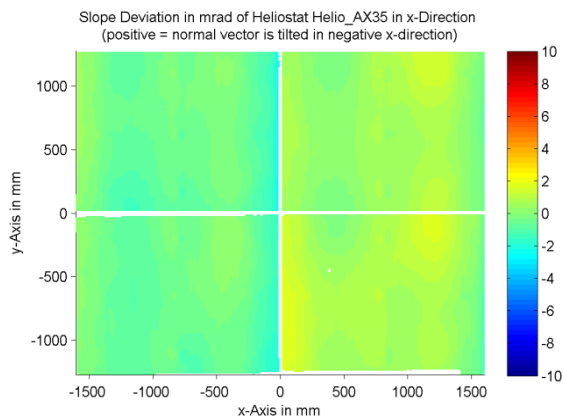
Panel:	Helio_AX35	Meas. Date:	24.04.2015 - 22:24:44
Paneltype:	Heliostat	Operator:	DLR Expert User
Setup:	MeasPosition	Comment:	
Negl. Rim:	0 mm	System:	QDec_2014-101
Orientation:	Mean Slope to Zero	Location:	Jülich

Result Overview

Quality: no specifications Evaluated Surface: 99.2 %

Value	Measurement	Specification	Description
SDx	0.72 mrad		Slope deviation in x-direction (rms)
SDy	0.88 mrad		Slope deviation in y-direction (rms)
ICAP_D1	98.16 %		Intercept on aperture

Result Graphs



Measurement System Information

Config File:	130929_Helio	QDec Version:	3.1.3680 (14.05.2014)
Evaluation Date:	30.06.2016 - 16:17:07		
Last Calibration:	14.08.2014		
PDF Filename:	...\MeasData_150424\Results\Helio\Helio_AX35\Helio_AX35_Rim0_Result_160630161707.pdf		