

QDec Measurement Summary

Measurement Information

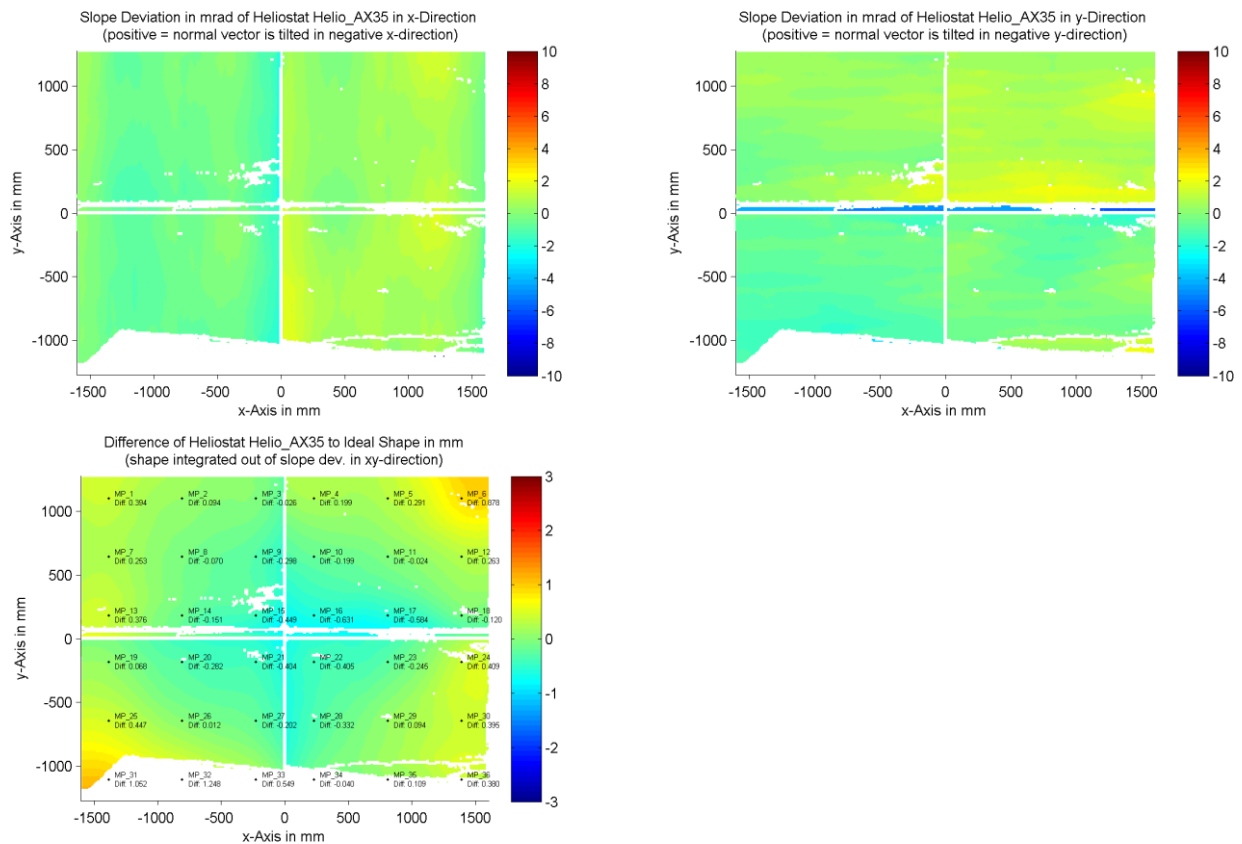
Panel:	Helio_AX35	Meas. Date:	06.10.2016 - 19:41:09
Paneltype:	Heliostat	Operator:	DLR Expert User
Setup:	MeasPosition	Comment:	
Negl. Rim:	0 mm	System:	QDec_2014-101
Orientation:	Mean Slope to Zero	Location:	Jülich

Result Overview

Quality: no specifications Evaluated Surface: 88.4 %

Value	Measurement	Specification	Description
SDx	0.71 mrad		Slope deviation in x-direction (rms)
SDy	1.02 mrad		Slope deviation in y-direction (rms)
ICAP_D1	98.17 %		Intercept on aperture

Result Graphs



Measurement System Information

Config File:	130929_Helio	QDec Version:	3.1.3680 (14.05.2014)
Evaluation Date:	13.10.2016 - 09:39:06		
Last Calibration:	14.08.2014		
PDF Filename:	...\MeasData_161005\Results\Helio\Helio_AX35\Helio_AX35_Rim0_Result_161013093906.pdf		