

QDec Measurement Summary

Measurement Information

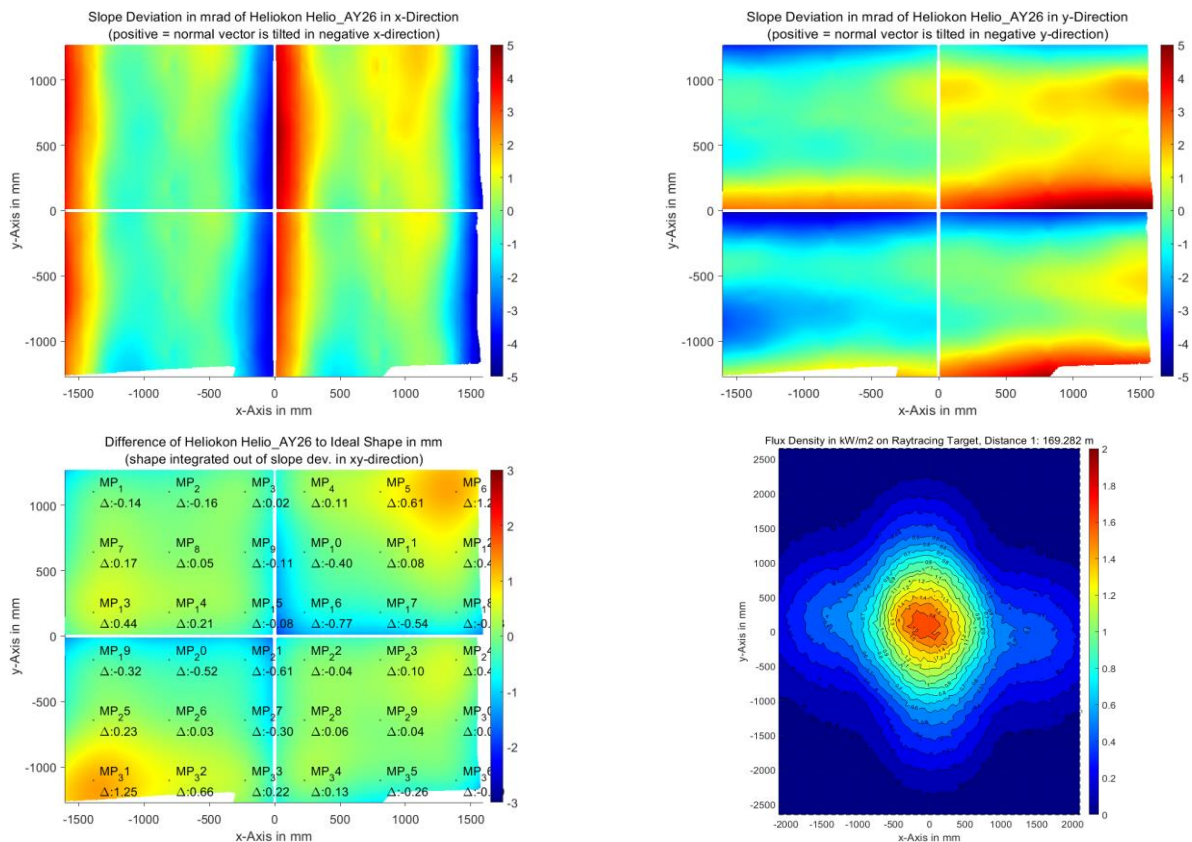
Panel:	Helio_AY26	Meas. Date:	03.03.2022 - 20:03:08
Paneltype:	Heliostat	Operator:	CSP-Services
Setup:	MeasPosition	Comment:	
Negl. Rim:	0 mm	System:	QDec_2014-101
Orientation:	Mean Slope to Zero	Location:	Jülich

Result Overview

Quality: no specifications Evaluated Surface: 97.2 %

Value	Measurement	Specification	Description
SDx	1.61 mrad		Slope deviation in x-direction (rms)
SDy	1.59 mrad		Slope deviation in y-direction (rms)
ICAP_D1	93.51 %		Intercept on aperture

Result Graphs



Measurement System Information

Config File:	130929_Helio	QDec Version:	1.0.5207 (06.10.2021)
Evaluation Date:	07.03.2022 - 11:31:50		
Last Calibration:	14.08.2014		
PDF Filename:	...\MeasData_220303\Results\Helio\Helio_AY26\Helio_AY26_Rim0_Result_220307113150.pdf		