

QDec Measurement Summary

Measurement Information

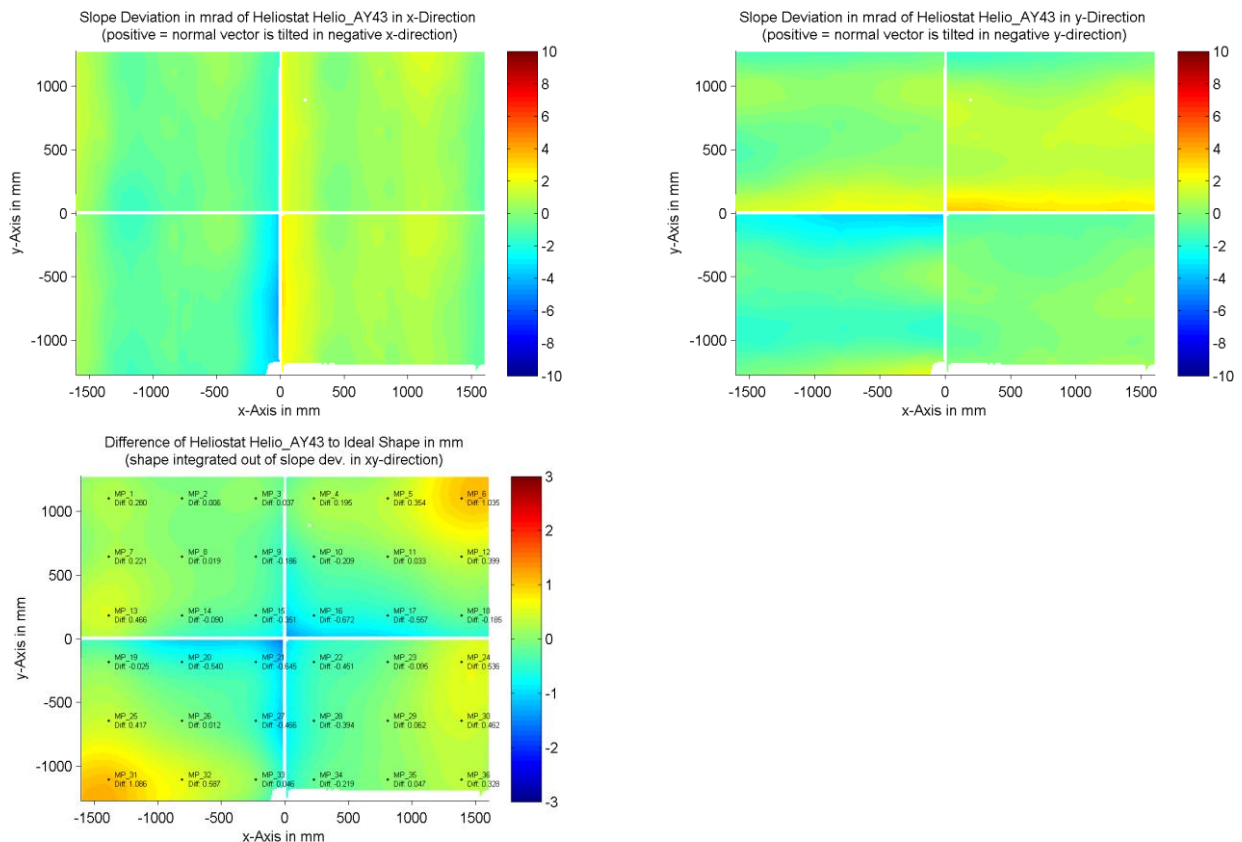
Panel:	Helio_AY43	Meas. Date:	24.04.2015 - 23:09:27
Paneltype:	Heliostat	Operator:	DLR Expert User
Setup:	MeasPosition	Comment:	
Negl. Rim:	0 mm	System:	QDec_2014-101
Orientation:	Mean Slope to Zero	Location:	Jülich

Result Overview

Quality: no specifications Evaluated Surface: 98.4 %

Value	Measurement	Specification	Description
SDx	0.98 mrad		Slope deviation in x-direction (rms)
SDy	1.10 mrad		Slope deviation in y-direction (rms)
ICAP_D1	97.43 %		Intercept on aperture

Result Graphs



Measurement System Information

Config File:	130929_Helio	QDec Version:	3.1.3680 (14.05.2014)
Evaluation Date:	30.06.2016 - 17:06:15		
Last Calibration:	14.08.2014		
PDF Filename:	...\MeasData_150424\Results\Helio\Helio_AY43\Helio_AY43_Rim0_Result_160630170615.pdf		