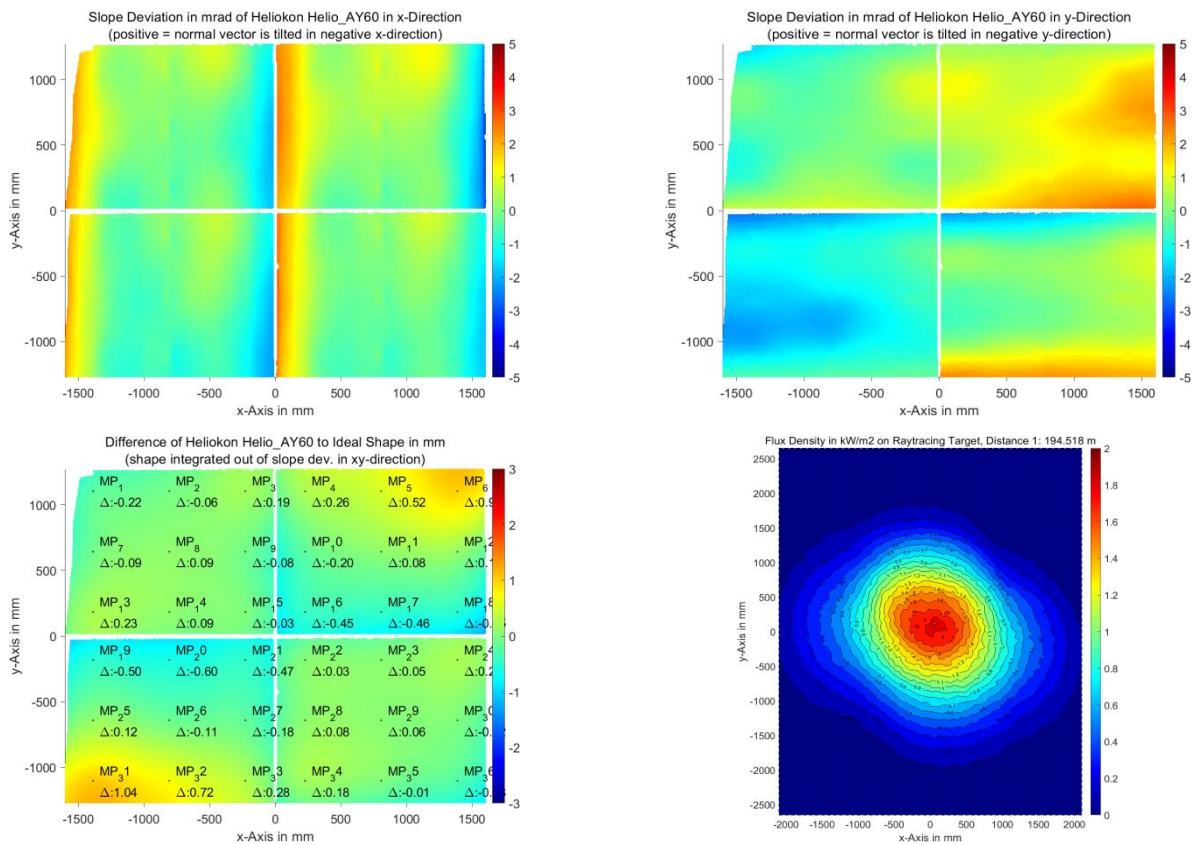


QDec Measurement Summary

| Measurement Information | | | |
|-------------------------|--------------------|--------------------|-----------------------|
| Panel: | Helio_AY60 | Meas. Date: | 08.02.2023 - 21:43:53 |
| Paneltype: | Heliostat | Operator: | CSP-Services |
| Setup: | MeasPosition | Comment: | |
| Negl. Rim: | 0 mm | System: | QDec_2014-101 |
| Orientation: | Mean Slope to Zero | Location: | Jülich |

| Result Overview | | | |
|-----------------|-------------------|---------------------------|--------------------------------------|
| Quality: | no specifications | Evaluated Surface: 98.3 % | |
| Value | Measurement | Specification | Description |
| SDx | 0.85 mrad | | Slope deviation in x-direction (rms) |
| SDy | 1.06 mrad | | Slope deviation in y-direction (rms) |
| ICAP_D1 | 97.01 % | | Intercept on aperture |

Result Graphs



| Measurement System Information | | | |
|--------------------------------|--|----------------------|-----------------------|
| Config File: | 130929_Helio | QDec Version: | 1.0.5229 (23.02.2022) |
| Evaluation Date: | 27.02.2023 - 13:54:53 | | |
| Last Calibration: | 14.08.2014 | | |
| PDF Filename: | ...\MeasData_230207\Results\Helio\Helio_AY60\Helio_AY60_Rim0_Result_230227135453.pdf | | |