

# QDec Measurement Summary

## Measurement Information

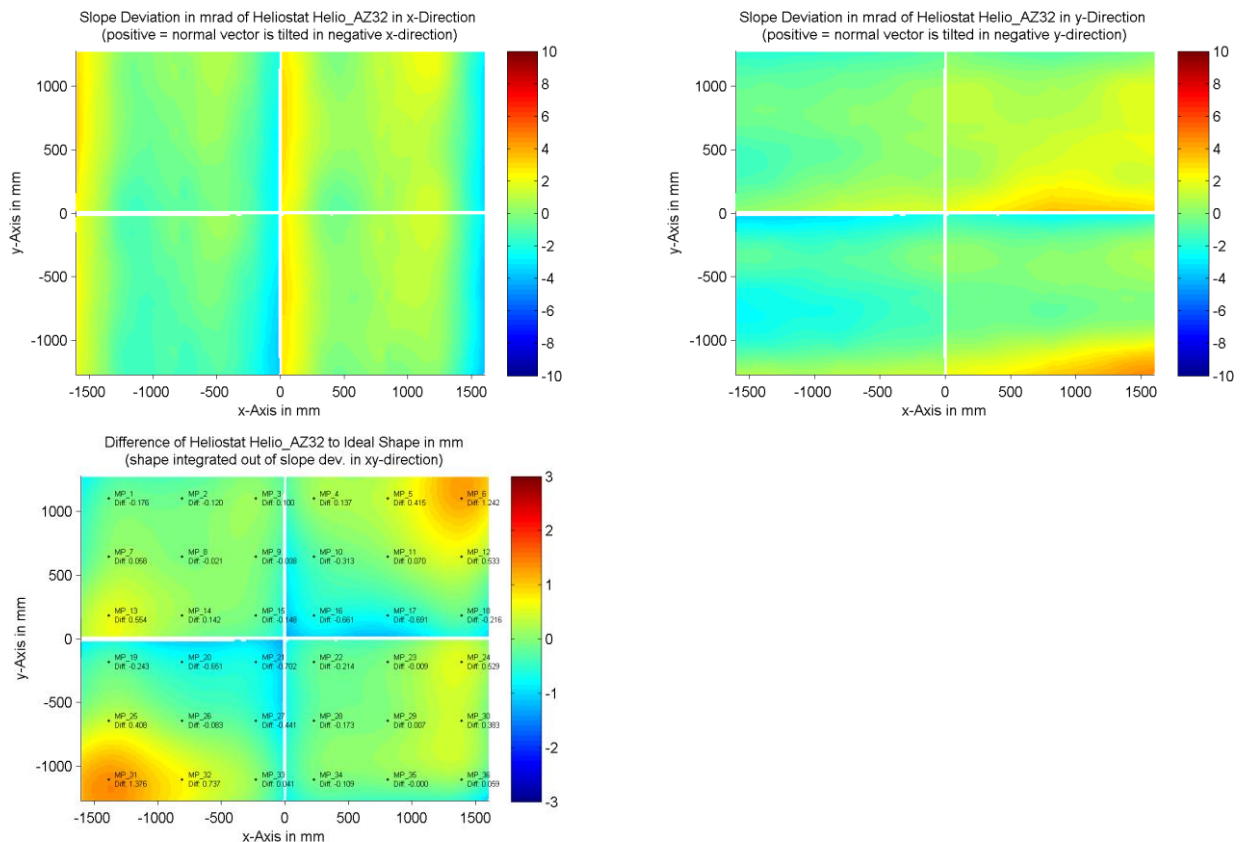
<b>Panel:</b>	Helio_AZ32	<b>Meas. Date:</b>	28.04.2015 - 21:44:54
<b>Paneltype:</b>	Heliostat	<b>Operator:</b>	DLR Expert User
<b>Setup:</b>	MeasPosition	<b>Comment:</b>	
<b>Negl. Rim:</b>	0 mm	<b>System:</b>	QDec_2014-101
<b>Orientation:</b>	Mean Slope to Zero	<b>Location:</b>	Jülich

## Result Overview

**Quality:** no specifications      Evaluated Surface: 99.8 %

Value	Measurement	Specification	Description
SDx	1.28 mrad		Slope deviation in x-direction (rms)
SDy	1.30 mrad		Slope deviation in y-direction (rms)
ICAP_D1	96.24 %		Intercept on aperture

## Result Graphs



## Measurement System Information

<b>Config File:</b>	130929_Helio	<b>QDec Version:</b>	3.1.3680 (14.05.2014)
<b>Evaluation Date:</b>	04.07.2016 - 13:27:07		
<b>Last Calibration:</b>	14.08.2014		
<b>PDF Filename:</b>	...\MeasData_150428\Results\Helio\Helio_AZ32\Helio_AZ32_Rim0_Result_160704132707.pdf		