

QDec Measurement Summary

Measurement Information

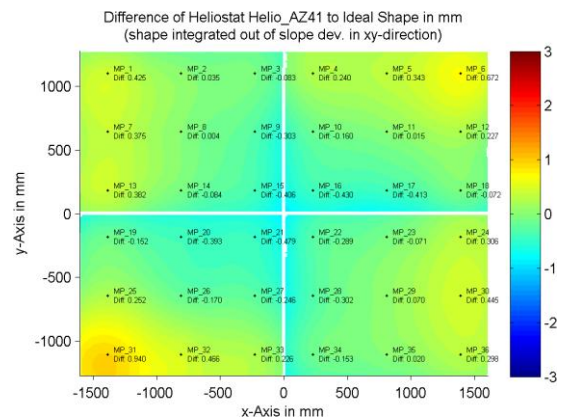
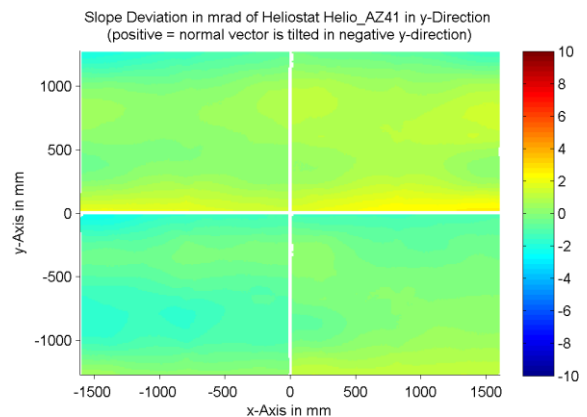
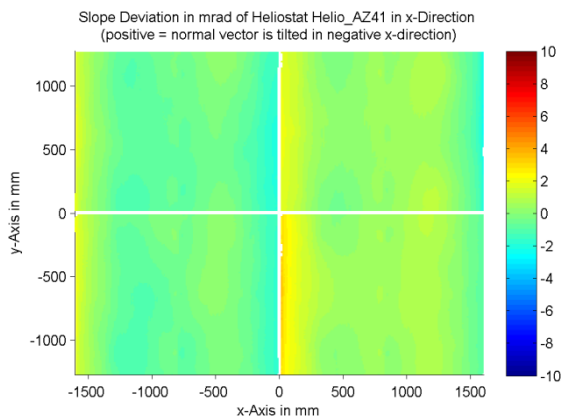
Panel:	Helio_AZ41	Meas. Date:	28.04.2015 - 21:49:03
Paneltype:	Heliostat	Operator:	DLR Expert User
Setup:	MeasPosition	Comment:	
Negl. Rim:	0 mm	System:	QDec_2014-101
Orientation:	Mean Slope to Zero	Location:	Jülich

Result Overview

Quality: no specifications Evaluated Surface: 100.0 %

Value	Measurement	Specification	Description
SDx	0.82 mrad		Slope deviation in x-direction (rms)
SDy	0.86 mrad		Slope deviation in y-direction (rms)
ICAP_D1	97.79 %		Intercept on aperture

Result Graphs



Measurement System Information

Config File:	130929_Helio	QDec Version:	3.1.3680 (14.05.2014)
Evaluation Date:	04.07.2016 - 13:29:27		
Last Calibration:	14.08.2014		
PDF Filename:	...\MeasData_150428\Results\Helio\Helio_AZ41\Helio_AZ41_Rim0_Result_160704132927.pdf		