

# QDec Measurement Summary

## Measurement Information

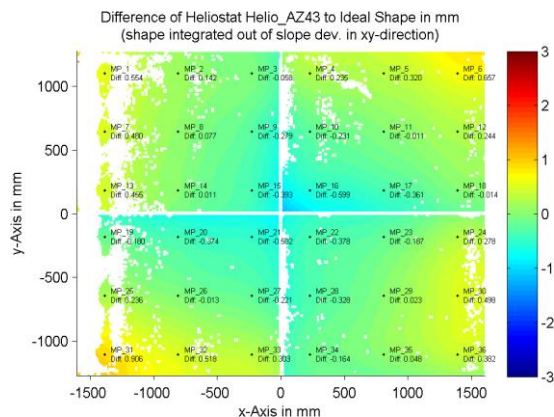
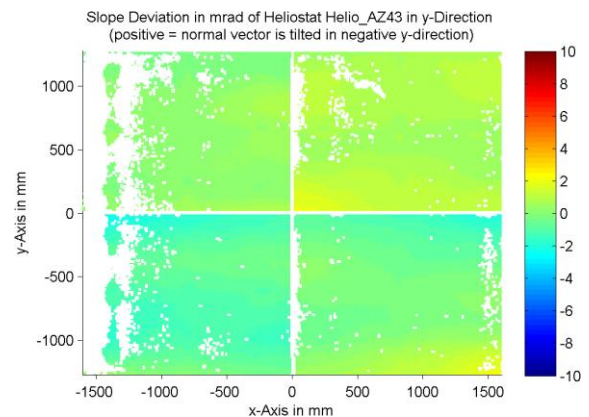
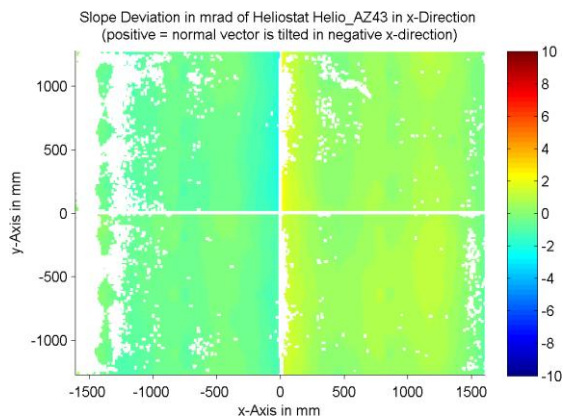
|                     |                    |                    |                       |
|---------------------|--------------------|--------------------|-----------------------|
| <b>Panel:</b>       | Helio_AZ43         | <b>Meas. Date:</b> | 07.05.2015 - 22:32:34 |
| <b>Paneltype:</b>   | Heliostat          | <b>Operator:</b>   | DLR Expert User       |
| <b>Setup:</b>       | MeasPosition       | <b>Comment:</b>    |                       |
| <b>Negl. Rim:</b>   | 0 mm               | <b>System:</b>     | QDec_2014-101         |
| <b>Orientation:</b> | Mean Slope to Zero | <b>Location:</b>   | Jülich                |

## Result Overview

**Quality:** no specifications      Evaluated Surface: 89.1 %

| Value   | Measurement | Specification | Description                          |
|---------|-------------|---------------|--------------------------------------|
| SDx     | 0.70 mrad   |               | Slope deviation in x-direction (rms) |
| SDy     | 0.79 mrad   |               | Slope deviation in y-direction (rms) |
| ICAP_D1 | 98.00 %     |               | Intercept on aperture                |

## Result Graphs



## Measurement System Information

|                   |  |               |                       |
|-------------------|--|---------------|-----------------------|
| Config File:      | 130929_Helio   | QDec Version: | 3.1.3680 (14.05.2014) |
| Evaluation Date:  | 04.07.2016 - 14:12:23  |               |                       |
| Last Calibration: | 14.08.2014   |               |                       |
| PDF Filename:     | ...\MeasData_150507\Results\Helio\Helio_AZ43\Helio_AZ43_Rim0_Result_160704141223.pdf |               |                       |