

# QDec Measurement Summary

## Measurement Information

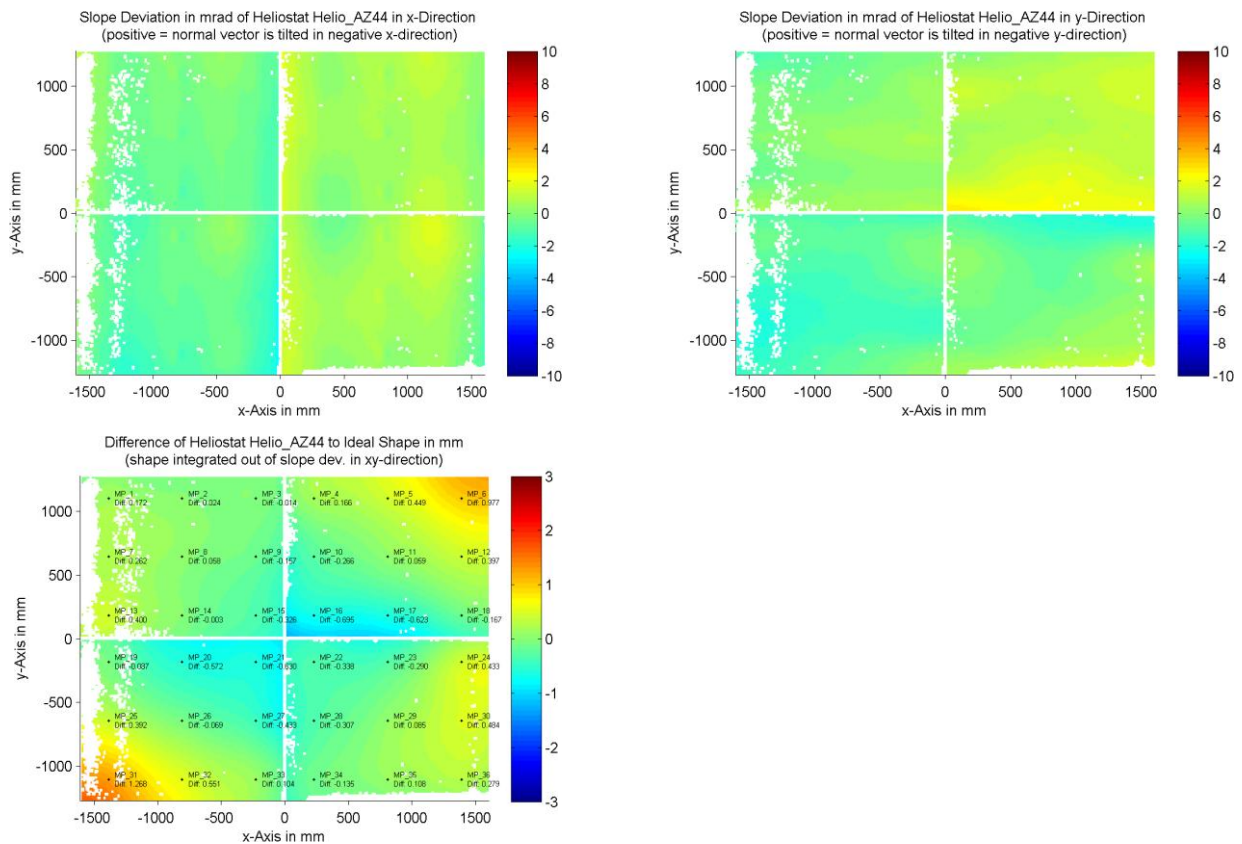
<b>Panel:</b>	Helio_AZ44	<b>Meas. Date:</b>	07.05.2015 - 22:30:32
<b>Paneltype:</b>	Heliostat	<b>Operator:</b>	DLR Expert User
<b>Setup:</b>	MeasPosition	<b>Comment:</b>	
<b>Negl. Rim:</b>	0 mm	<b>System:</b>	QDec_2014-101
<b>Orientation:</b>	Mean Slope to Zero	<b>Location:</b>	Jülich

## Result Overview

**Quality:** no specifications Evaluated Surface: 94.8 %

Value	Measurement	Specification	Description
SDx	0.75 mrad		Slope deviation in x-direction (rms)
SDy	0.98 mrad		Slope deviation in y-direction (rms)
ICAP_D1	97.97 %		Intercept on aperture

## Result Graphs



## Measurement System Information

Config File:	130929_Helio	QDec Version:	3.1.3680 (14.05.2014)
Evaluation Date:	04.07.2016 - 14:11:02		
Last Calibration:	14.08.2014		
PDF Filename:	...\MeasData_150507\Results\Helio\Helio_AZ44\Helio_AZ44_Rim0_Result_160704141102.pdf		