

QDec Measurement Summary

Measurement Information

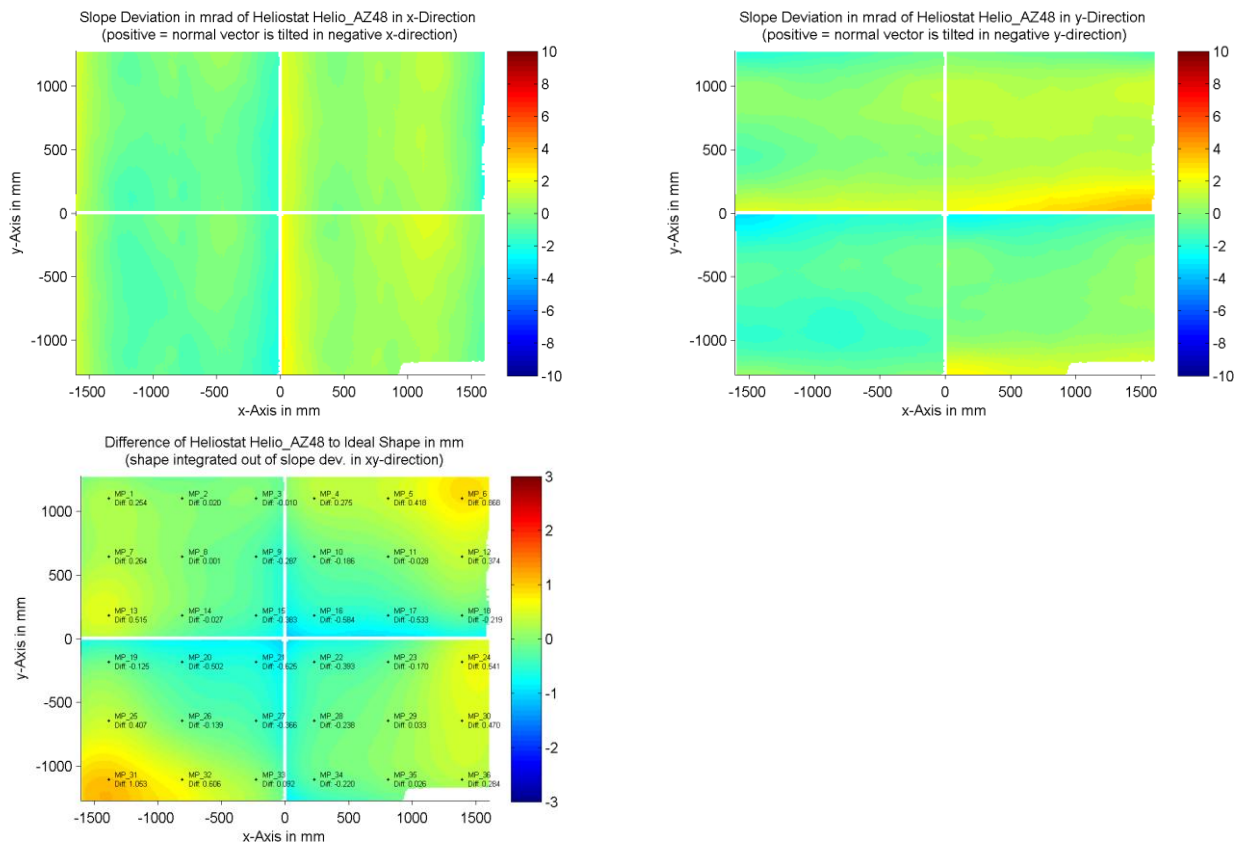
Panel:	Helio_AZ48	Meas. Date:	28.04.2015 - 22:11:15
Paneltype:	Heliostat	Operator:	DLR Expert User
Setup:	MeasPosition	Comment:	
Negl. Rim:	0 mm	System:	QDec_2014-101
Orientation:	Mean Slope to Zero	Location:	Jülich

Result Overview

Quality: no specifications Evaluated Surface: 99.1 %

Value	Measurement	Specification	Description
SDx	0.81 mrad		Slope deviation in x-direction (rms)
SDy	1.07 mrad		Slope deviation in y-direction (rms)
ICAP_D1	97.84 %		Intercept on aperture

Result Graphs



Measurement System Information

Config File:	130929_Helio	QDec Version:	3.1.3680 (14.05.2014)
Evaluation Date:	04.07.2016 - 13:41:36		
Last Calibration:	14.08.2014		
PDF Filename:	...\MeasData_150428\Results\Helio\Helio_AZ48\Helio_AZ48_Rim0_Result_160704134136.pdf		